



4B MERCHANT SQUARE EAST W2

Price
£1,375 per week

Three double bedroom apartment within this prestigious portered block in Paddington Basin with underground parking. A large three bedroom apartment located on the 13th floor, within a popular new development within Paddington Basin. The apartment has a large eat in kitchen/ reception room, and three very good sized double bedrooms. The apartment has two bathrooms (one en suite), and fantastic built in storage.

Merchant Square is ideally located for easy access to Paddington Station, where you will find the Heathrow Express, overground rail links and underground tube links (Bakerloo, Circle, District and Hammersmith & City lines).

Hyde Park is a short walk away, as are the independent shops and restaurants in Connaught Village and Little Venice.

Details

3 Bedrooms
2 Bathrooms
Reception
Kitchen
Concierge

Lift
Parking

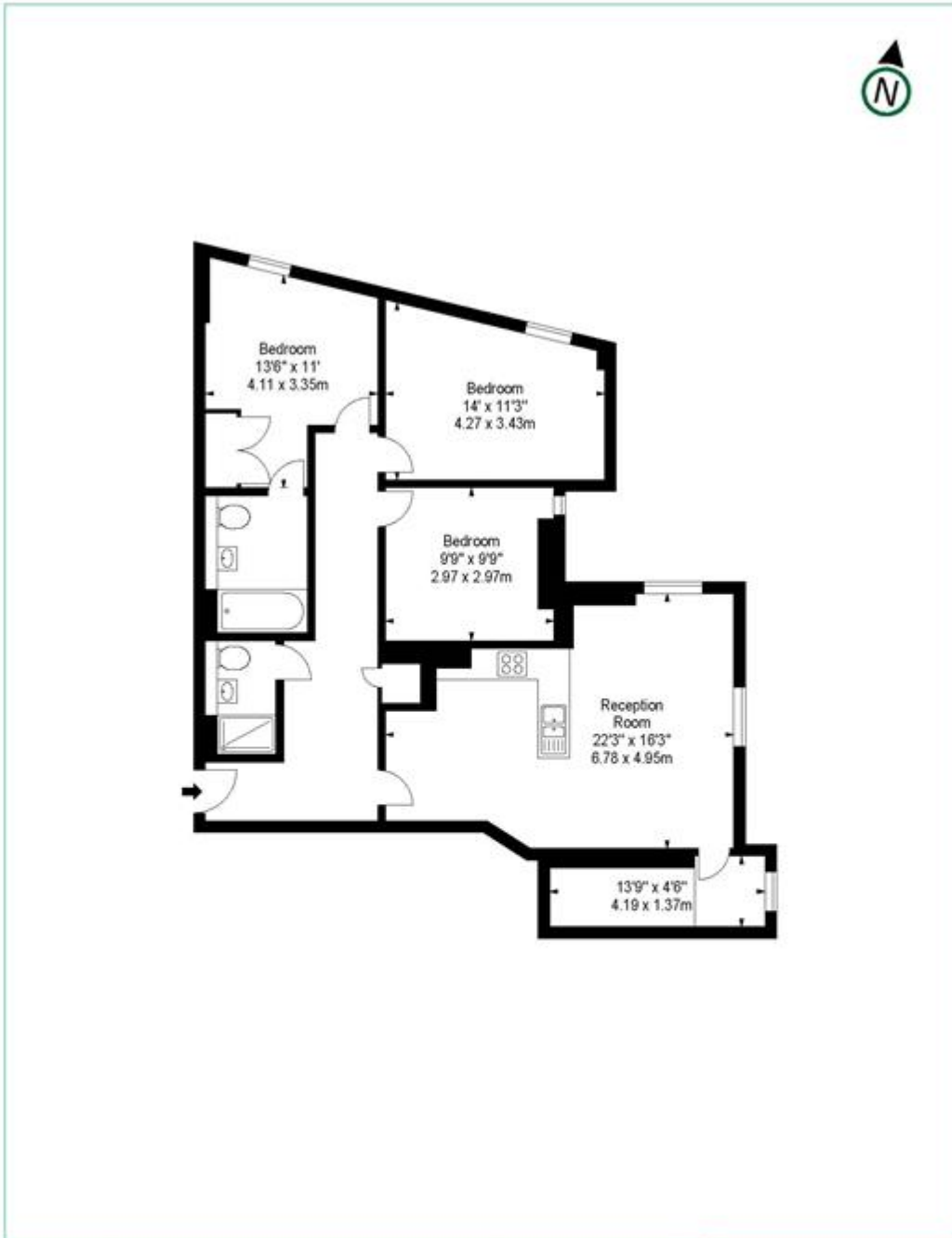


PLAZA estates

www.plazaestates.co.uk

Marble Arch Office, 29-31 Edgware Road, London W2 2JE Tel: 020-7724-3100 Fax: 020-7258-3090





**APARTMENT 1311
MERCHANT SQUARE EAST
W2**

Thirteenth Floor

Approx Gross Internal Area*
1018 Sq Ft - 94.57 Sq M

Surveyed and Drawn By:

BKR

Sunnyhill House, 3-7 Sunnyhill Road
London, SW16 2UG

Tel: 02045 257 2023
Fax: 02045 257 2024
info@bkrfloorplans.co.uk
100m 361700925118.CO.UK
© 19/07/2016

* As Defined by RICS - Code of Measuring Practice

Illustration For Identification Purposes Only. Not to Scale
All Calculations include Any/All Areas Under 1.5m Head Height.

Terms and Conditions

Available: Available Now For Long Let
Price: £1,375 per week

SUBJECT TO CONTRACT

VIEWING STRICTLY BY APPOINTMENT