



4B MERCHANT SQUARE EAST W2

Price
£1,400 per week

A stunning interior designed apartment, set within the heart of the Paddington Basin. The modern apartment features a spacious open plan kitchen/reception room, three double bedrooms (master with ensuite) and family bathroom. There is also secure underground parking available.

Merchant Square is ideally located for easy access to Paddington Station, where you will find the Heathrow Express, overground rail links and underground tube links (Bakerloo, Circle, District and Hammersmith & City lines).

Hyde Park is a short walk away, as are the independent shops and restaurants in Connaught Village and Little Venice.

Details

3 Bedrooms
2 Bathrooms
Reception
Kitchen
Concierge
Lift

Parking

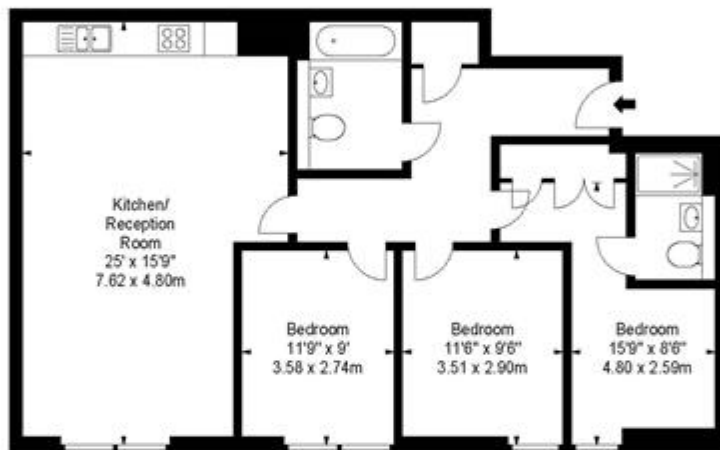


PLAZA estates

www.plazaestates.co.uk

Marble Arch Office, 29-31 Edgware Road, London W2 2JE Tel: 020-7724-3100 Fax: 020-7258-3090





APARTMENT 509
MERCHANT SQUARE EAST
W2

Fifth Floor

Approx Gross Internal Area*
942 Sq Ft - 87.51 Sq M

* As Defined by RICS - Code of Measuring Practice

Illustration For Identification Purposes Only. Not to Scale
All Calculations include Any/All Areas Under 1.5m Head Height.

Designed and Drawn By

BKR

Surreyhill House, 37 Surreyhill Road
London, SW16 2JG

Tel: 02045 257 2023
Fax: 02045 257 2024
info@bkrfloorplans.co.uk
www.bkrfloorplans.co.uk
© BKR 2015

Terms and Conditions

Available: Available Now For Long Let
Price: £1,400 per week

SUBJECT TO CONTRACT

VIEWING STRICTLY BY APPOINTMENT