



4B MERCHANT SQUARE EAST, PADDINGTON W2

Price
£1,400 per week

A fantastic 11th floor 3 bedroom apartment available in Merchant Square. We are pleased to offer this stunning interior designed apartment, set within the heart of the Paddington Basin and close to the popular West End Quay. The apartment is situated on the 11th floor of this prestigious building which features 24 hour concierge, lift service, and secure underground parking. The spacious and bright apartment comprises a beautiful reception room with balcony and superb views, a new and modern fitted open plan kitchen, three bedrooms and two bathrooms.

The apartment offers easy access to superb transport links such as Paddington Train Station (Bakerloo, Hammersmith & City, Circle, District lines and Heathrow) Edgware Road (Circle, District and Bakerloo lines).

Details

- 3 Bedrooms
- 2 Bathrooms
- Reception Room
- Kitchen
- Concierge
- Lift

Underground Parking
Balcony

PLAZA estates

www.plazaestates.co.uk

Marble Arch Office, 29-31 Edgware Road, London W2 2JE Tel: 020-7309-2100 Fax: 020-7258-3090

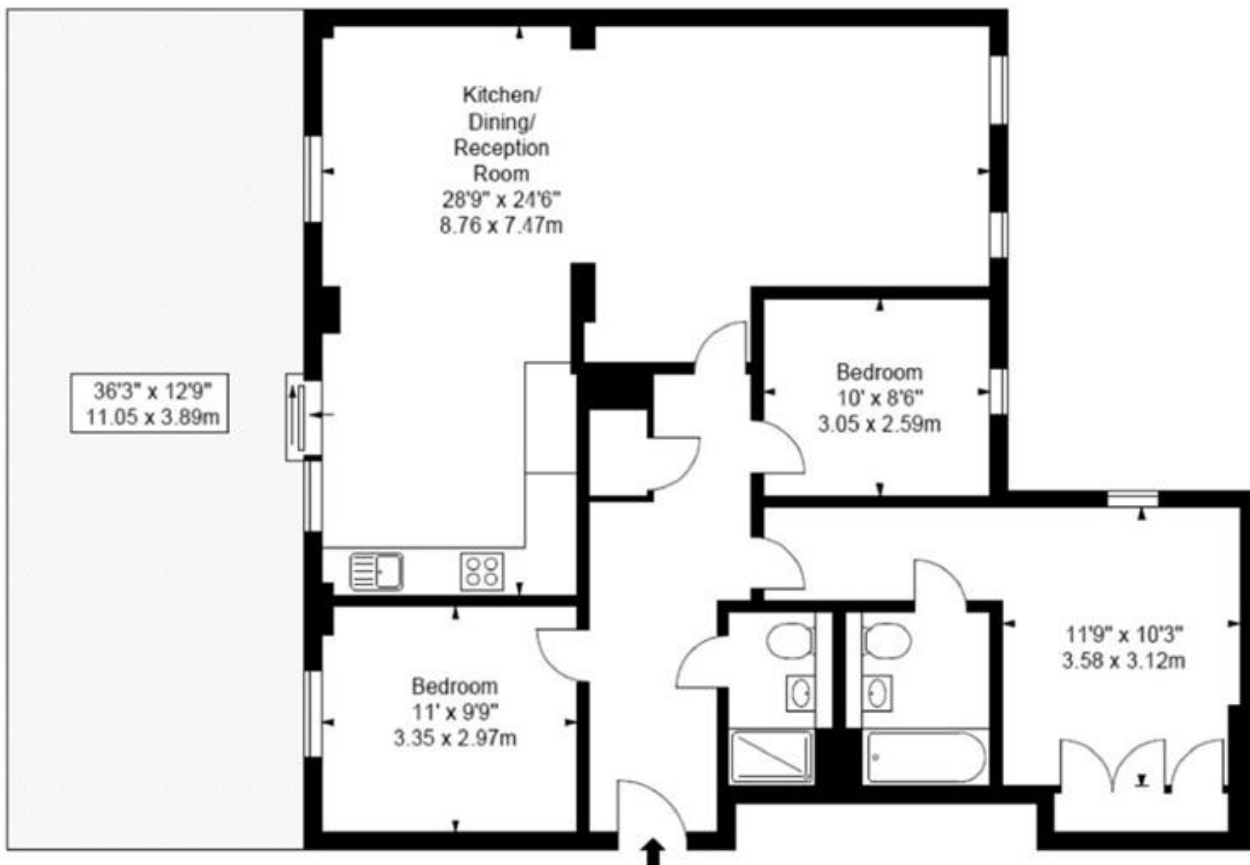


PLAZA estates

www.plazaestates.co.uk

Marble Arch Office, 29-31 Edgware Road, London W2 2JE Tel: 020-7309-2100 Fax: 020-7258-3090





Terms and Conditions

Available: Available Now For Long Let
Price: £1,400 per week

SUBJECT TO CONTRACT

VIEWING STRICTLY BY APPOINTMENT