

3 Bridge Street
Bishop's Stortford
Herts CM23 2JU

LEDNOR
& COMPANY

(01279) 505055
sales@lednor.co.uk
www.lednor.co.uk

Established 1986

Independent Estate Agents and Valuers



1 Meadowlands, Bishop's Stortford, Herts, CM23 2HY

£425,000

Rarely available. An extended 1930's character three bedroom semi detached in sought after location.

The property enjoys fantastic views over meadow land, fields and the river Stort, whilst still being within walking distance of the town centre . It benefits from replacement Upvc double glazing and gas central heating with a refitted combination boiler.

The accommodation comprises: Entrance hall, sitting/dining room, kitchen/breakfast room, large sitting room with views over the garden and The Meads. Upstairs there are two double bedrooms, one single bedroom and a refitted bathroom.

The south east facing rear garden is approximately 100' in length and is unoverlooked . The front garden has a block paved driveway providing off-road parking.

EPC Band D.

Entrance Hall

Wooden flooring, window to side, understairs storage cupboards, stairs to first floor.

Sitting/Dining Room

12'7" into bay x 10'5" (3.84m into bay x 3.18m)

Exposed timber flooring, wrought iron fireplace, bay window to front, radiator.



Kitchen/Breakfast Room

16'4" x 12'10" (4.98m x 3.91m)

Wooden cupboard and drawer base units with wooden worktop above. Inset stainless steel single drainer sink unit with mixer tap. Space for cooker, dishwasher, washing machine, fridge/freezer. Range of wall units incorporating extractor hood. Window to side overlooking The Meads. Wooden flooring, radiator, door to sitting room.





Family Room

15'5" x 15'4" (4.70m x 4.67m)

Wooden flooring, window to side, large sliding patio doors to rear garden with views over the garden and The Meads. Radiator.





First Floor Landing

Window to side, hatch to loft space, cupboard housing Worcester combination boiler.

Bedroom One

13' x 10'7" (3.96m x 3.23m)

Bay window to front, radiator.



Bedroom Two

12'5" x 10'7" (3.78m x 3.23m)

Window overlooking rear garden, radiator.



Bedroom Three

9'2" x 5'7" (2.79m x 1.70m)

Exposed wooden flooring, window to rear.

Bathroom

Panel bath with mixer tap and shower attachment. Wc with concealed cistern. Hand wash basin with mixer tap set on vanity unit. Heated towel rail, frosted window to front, tiled flooring.

Rear Garden

approx 100' (approx 30.48m)

Paved steps lead down to the garden with block paved patio. Lawn area with flower and shrub beds. Further block paved patio and lawns. Large garden shed. Gated side access, outside light and tap.



View over The Meads



Front Garden

Block paved driveway provides off road parking, surrounded by flower and shrub beds. Additional visitor parking to the front.

Disclaimer

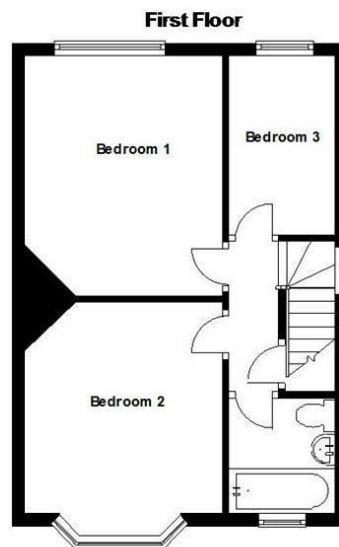
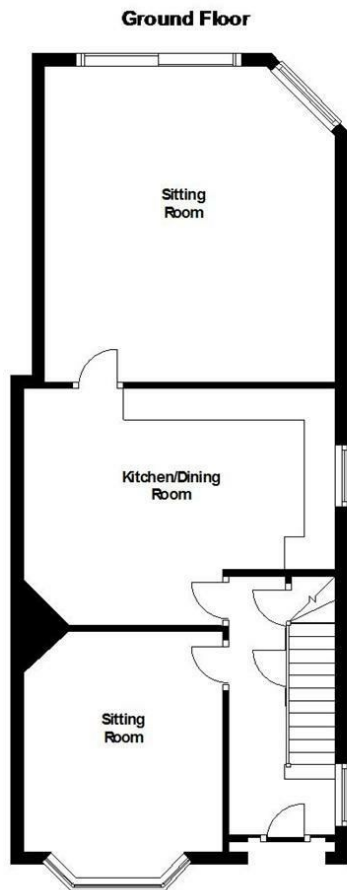
For clarification, we wish to inform prospective purchasers that we have prepared these sales particulars as a general guide. We have not carried out survey, not tested the services, appliances or specific fittings and any mention of such items does not imply that they are in working order. Room sizes are approximate and should not be relied upon for carpets and furnishings. Photographs are for illustration only and may depict items which are not for sale or included in the sale of the property. Any stated plot size is intended merely as a guide and has not been officially measured or verified. We have not checked the legal documents to verify the freehold/leasehold status of the property and purchaser is advised to obtain clarification from their solicitor or surveyor. MONEY LAUNDERING REGULATIONS 2003. Intending purchaser will be asked to produce identification documents and we would ask for your co-operation in order that there be no delay in agreeing the sale.

FINANCIAL SERVICES

Through our mortgage broker Mark Jackson of M.D.Jackson Financial Services, we are able to offer independent mortgage advice with no obligation. Mark is also independent for all protection needs allowing him to review your life assurance and critical illness policies so that he can ensure that you have the most suitable cover. He can be contacted on 01799 542699. Please feel free to call him for any advice or quotations required. Your home is at risk if you do not keep up payments on a mortgage or loan secured against it. M.D.Jackson Financial Services are directly authorised by the Financial Conduct Authority no. 300773

RELOCATION AGENT NETWORK

WHY YOU SHOULD CHOOSE A RELOCATION AGENT NETWORK MEMBER * Independently selected as the best local agents. * Now affiliated to over 600 offices across the UK. * Local reputation, experience and commitment. * Independent owner managed business. * More out of town buyers through links with Cartus who are the premier provider of global relocation services. * Access to the largest property website of its kind in the UK - www.relocation-agent-network.co.uk. * Not owned by a financial institution. * Regularly 'mystery shopped' to ensure high standards. * Committed to meeting your needs this year, next year and for many more to come.



APPROX GROSS INTERNAL FLOOR AREA 1025 SQFT
This floor plan is intended as a **GUIDE TO LAYOUT** and is **NOT TO SCALE**