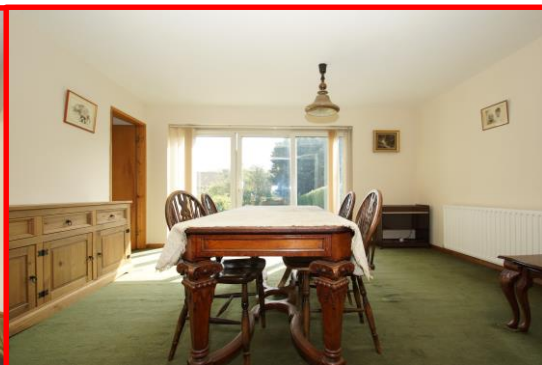


TO LET



TO LET

Auxerre Avenue, Greenlands, Redditch



This 'Chain Free' and deceptively spacious three double bedroom extended semi-detached property is set within a popular residential area of Greenlands, providing good access to the local amenities, schooling, bus route and national road networks. The property is being offered with its own solar power system including fitted panels, which help reduce the cost of electricity on continuous basis. The layout briefly comprises: Entrance porch, hallway, good-sized living room with opening to extended dining area, study/playroom, kitchen with integrated dishwasher and fridge, three double bedrooms and a family shower room. The property further benefits from a good-sized side garage with private parking for multiple cars to the front, pleasant front and rear gardens, double glazing and gas-fired central heating system. EPC = D

***** VIEWING HIGHLY RECOMMENDED *****

Monthly Rental Of £775