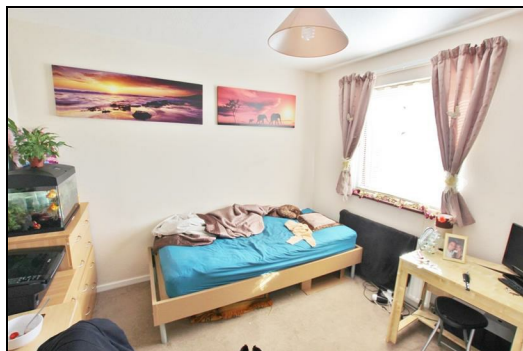




36 Hopkins Close, Townsend, Bournemouth, Dorset, BH8 0LE
£219,950



Three bedroom family house close to Castle Point - Currently let @£950PCM

This three bedroom terraced house has accommodation consisting of a lounge and modern kitchen/diner including appliances (washing machine, fridge freezer as well as additional under-counter fridge and freezer, gas hob and electric oven). The ground floor also has a WC and large storage cupboard.

Upstairs there are three double bedrooms and a modern bathroom with shower over bath as well as plenty more fitted storage space.

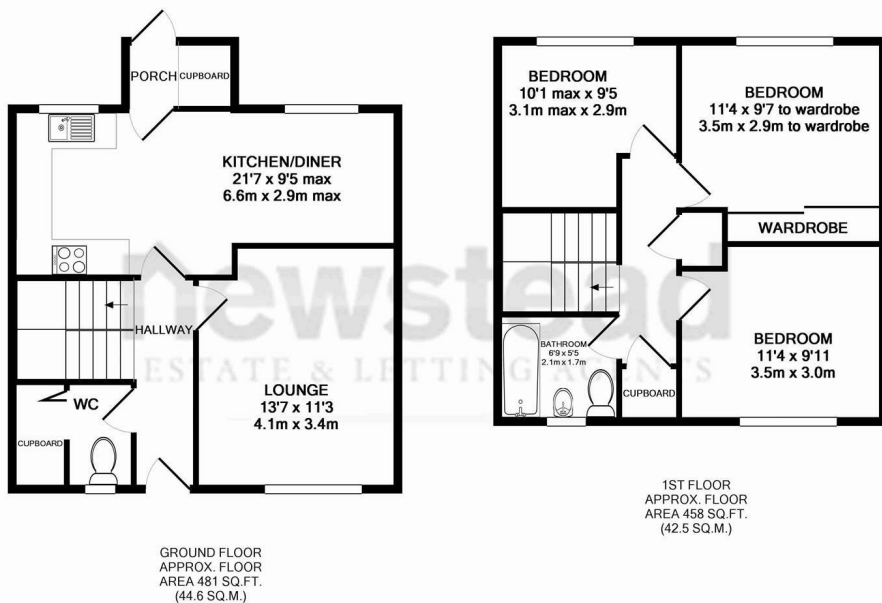
The property also has gas fired central heating and UPVC double glazing.

Outside the front garden has been paved to create parking for two/three cars. The rear garden gets the afternoon sunshine and backs onto woodland at the rear.

Currently tenanted @ £950 pcm on a six month Assured Shorthold tenancy agreement from 12th Dec 2015.

Due to the property being occupied by tenants, we kindly request that appointment be made at least 24 hours in advance.

No forward chain



Whilst every attempt has been made to ensure the accuracy of the floor plan contained here, measurements of doors, windows, rooms and any other items are approximate and no responsibility is taken for any error, omission, or mis-statement. This plan is for illustrative purposes only and should be used as such by any prospective purchaser. The services, systems and appliances shown have not been tested and no guarantee as to their operability or efficiency can be given
Made with Metropix ©2015

You may download, store and use the material for your own personal use and research. You may not republish, retransmit, redistribute or otherwise make the material available to any party or make the same available on any website, online service or bulletin board of your own or of any other party or make the same available in hard copy or in any other media without the website owner's express prior wr