



Offers In Region Of £425,000 Freehold

For Sale

Rental Yield: 3.95%

South Croydon, Surrey CR2 6EH



[www.martincolondon.com](http://www.martincolondon.com)

**MARTIN&CO**

0208 688 8565

[croydon@martinco.com](mailto:croydon@martinco.com)

145 Brighton Road, South Croydon, Surrey, CR2 6EF

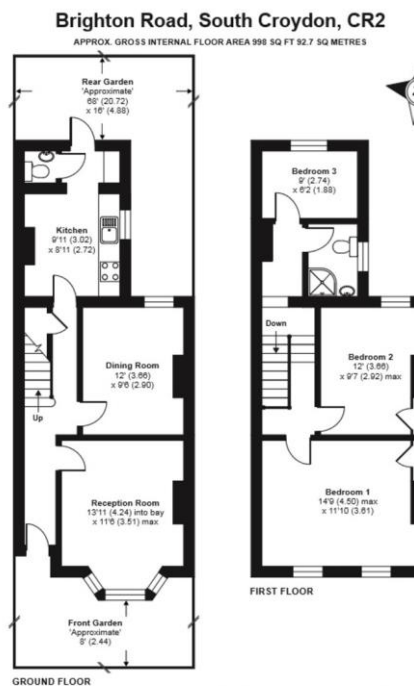
Accuracy: Whilst we endeavour to make our sales details accurate and reliable, if there is any point which is of particular importance to you, please contact the office and we will be pleased to check the information. Do so, particularly if contemplating travelling some distance to view the property. Sonic / laser Tape: All measurements have been taken using a sonic / laser tape measure and therefore, may be subject to a small margin of error. Services Not tested: The mention of any appliances and/or services within these Sales Particulars does not imply they are in full and efficient working order. All Measurements: All Measurements are Approximate: Mortgage & Financial Advice: The Martin & Co mortgage service is provided by London & Country Mortgages the UK's largest Independent Fee-Free mortgage broker of Beazer House, Lower Bristol Road, Bath, BA2 3BA. Authorised and regulated by the Financial Conduct Authority. Their FCA number is 143002. YOUR HOME IS AT RISK IF YOU DO NOT KEEP UP REPAYMENTS ON A MORTGAGE OR OTHER LOANS SECURED ON IT. Full written quotation available on request. A suitable life policy may be required. Loans subject to status. Minimum age 18.

For Sale - Offers In Region Of **£425,000** Freehold

## A Period Terraced Three Bedroom House

This period terraced house is a blank canvas for the new owner to make their own mark, being neutrally decorated throughout. Comprising three good size bedrooms, upstairs bathroom, two receptions, kitchen with integrated appliances, downstairs guest WC and a large rear garden for the budding horticulturist to get their teeth into. Offered to the market CHAIN FREE, the house is positioned close to local bus routes with South Croydon station being near to hand and East Croydon station a short bus hop away.

- PERIOD TERRACE HOUSE
- TWO RECEPTIONS
- KITCHEN WITH APPLIANCES
- GAS CENTRAL HEATING
- THREE BEDROOMS
- UPSTAIRS SHOWER ROOM
- GENEROUS REAR GARDEN
- CHAIN FREE



[www.martincolondon.com](http://www.martincolondon.com)

**MARTIN&CO**

0208 688 8565

[croydon@martinco.com](mailto:croydon@martinco.com)

145 Brighton Road, South Croydon, Surrey, CR2 6EF

Accuracy: Whilst we endeavour to make our sales details accurate and reliable, if there is any point which is of particular importance to you, please contact the office and we will be pleased to check the information. Do so, particularly if contemplating travelling some distance to view the property. Sonic / Laser Tape: All measurements have been taken using a sonic / laser tape measure and therefore, may be subject to a small margin of error. Services Not tested: The mention of any appliances and/or services within these Sales Particulars does not imply they are in full and efficient working order. All Measurements: All Measurements are Approximate: Mortgage & Financial Advice: The Martin & Co mortgage service is provided by London & Country Mortgages the UK's largest Independent Fee-Free mortgage broker of Beazer House, Lower Bristol Road, Bath, BA2 3BA. Authorised and regulated by the Financial Conduct Authority. Their FCA number is 143002. YOUR HOME IS AT RISK IF YOU DO NOT KEEP UP REPAYMENTS ON A MORTGAGE OR OTHER LOANS SECURED ON IT. Full written quotation available on request. A suitable life policy may be required. Loans subject to status. Minimum age 18.