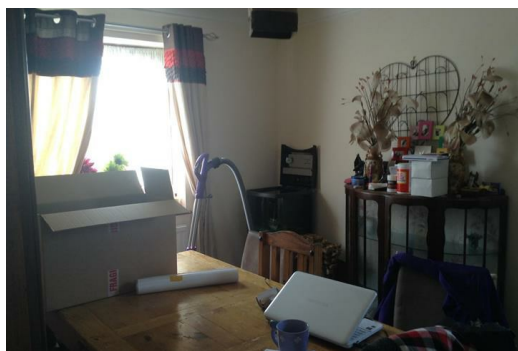




## **30A, Station Road, Littleport, Ely, Cambridgeshire, CB6 1QF**

BetterMove are pleased to present this four bedroom detached property. This property benefits from gas central heating throughout and also features a utility room and garage!



Kitchen 10'6" x 8'2" (3.22 x 2.51)

Dining 7'11" x 10'11" (2.43 x 3.35)

Living 10'6" x 13'3" (3.21 x 4.05)

Bedroom One 15'10" x 8'6" (4.84 x 2.60)

Bedroom Two 6'5" x 12'1" (1.97 x 3.70)

Bedroom Three 13'1" x 9'0" (3.99 x 2.75)

Bedroom Four 13'4" x 8'10" (4.07 x 2.71)

Bathroom 6'5" x 9'8" (1.97 x 2.95)

