





### Full Description

Guide Price £775,000 - £825,000

A unique and rare opportunity to purchase this four bedroom detached property situated close to popular schools and amenities.

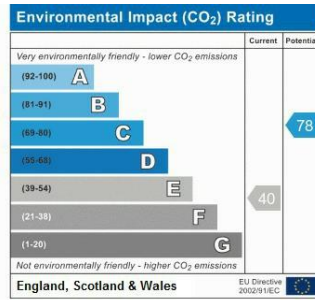
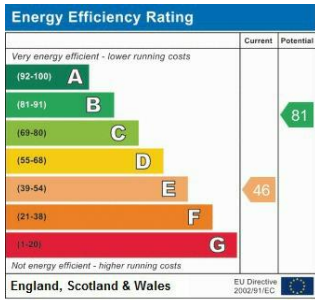
The property retains many of its original features including leaded light and stained glass windows, parquet flooring, wood panelling, feature staircase and inglenook fireplace with wood burning stove.

The property comprises two entrance's leading into a spacious hallway, lounge room, dining room with gas fire, fitted kitchen with breakfast bar, utility room, cloakroom, and garage.

Upstairs offers a large landing with multiple storage areas, master bedroom with vanity basin, second double bedroom with walk-in wardrobe, two single bedrooms, separate WC and family bathroom.

Further benefits include partial secondary glazing, driveway for two vehicles, and a mature private garden.





Please refer to

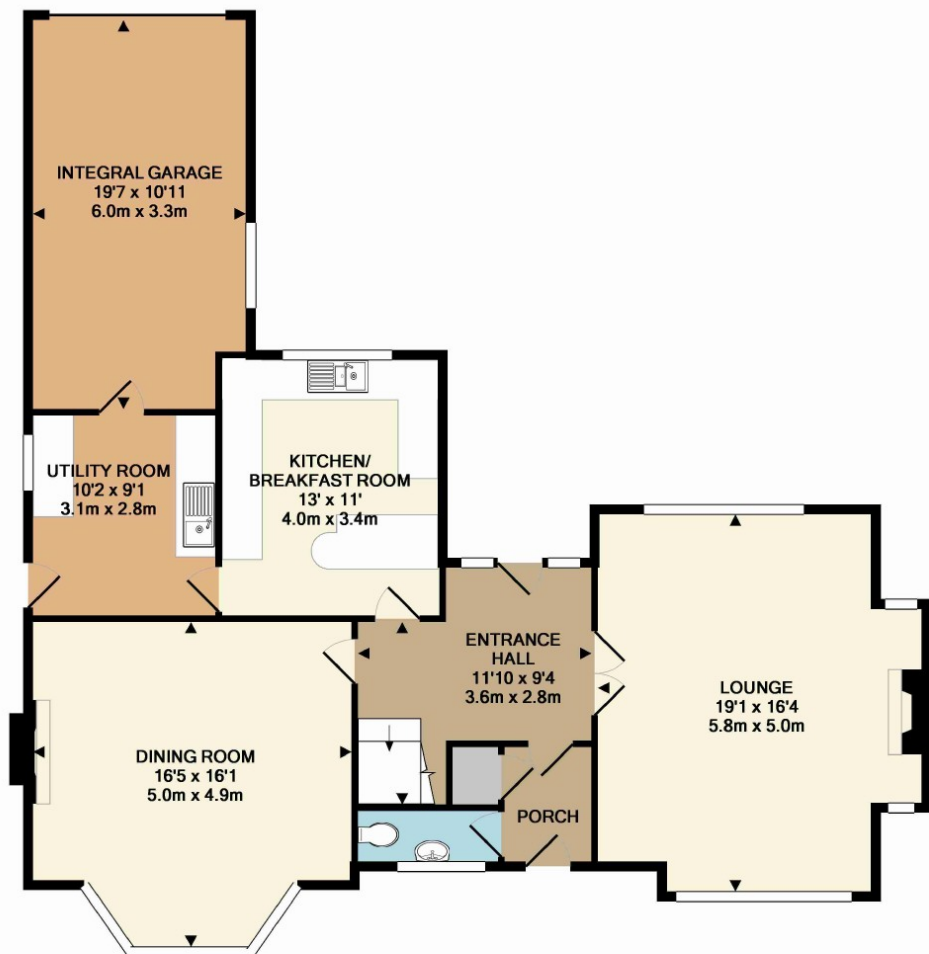
---

[www.jdmestateagents.com](http://www.jdmestateagents.com)

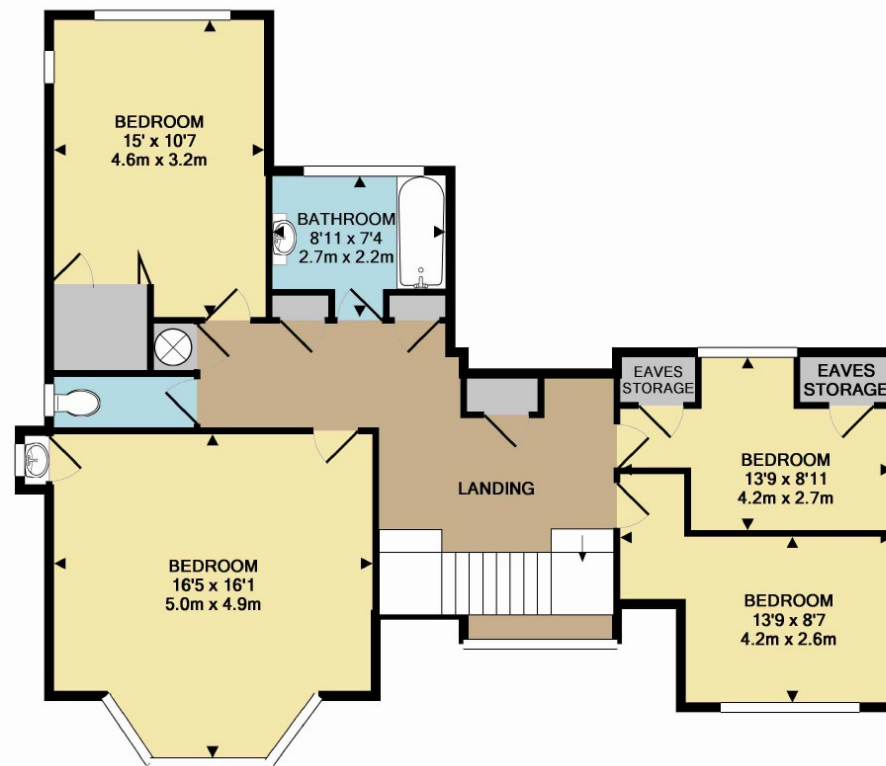
---

to view our full area guides





GROUND FLOOR  
APPROX. FLOOR  
AREA 1135 SQ.FT.  
(105.5 SQ.M.)



1ST FLOOR  
APPROX. FLOOR  
AREA 944 SQ.FT.  
(87.7 SQ.M.)

TOTAL APPROX. FLOOR AREA 2079 SQ.FT. (193.2 SQ.M.)

Whilst every attempt has been made to ensure the accuracy of the floor plan contained here, measurements of doors, windows, rooms and any other items are approximate and no responsibility is taken for any error, omission, or mis-statement. This plan is for illustrative purposes only and should be used as such by any prospective purchaser. The services, systems and appliances shown have not been tested and no guarantee as to their operability or efficiency can be given  
Made with Metropix ©2016

