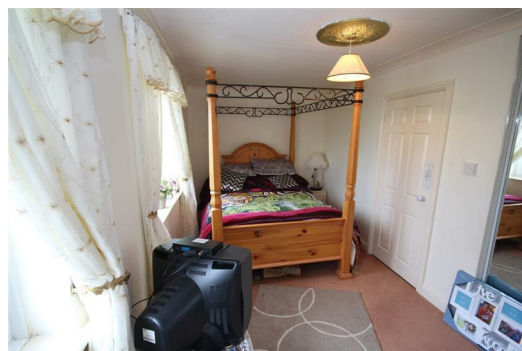




Riverside Lodge, Gunthorpe, Doncaster, Lincolnshire, DN9 1BQ

BetterMove are pleased to present this four bedroom detached property. This property benefits from gas central heating and double glazing throughout, there is also a conservatory and off road parking available.



Lounge 23'3" x 15'8" (7.1 x 4.8)

Kitchen/Diner 12'9" x 23'3" (3.9 x 7.1)

Downstairs Bathroom 14'5" x 9'2" (4.4 x 2.8)

Utility Room

Upstairs Lounge 10'9" x 20'8" (3.3 x 6.3)

Bedroom One 9'6" x 11'1" (2.9 x 3.4)

Bedroom Two 9'6" x 12'5" (2.9 x 3.8)

Bedroom Three 10'2" x 9'6" (3.1 x 2.9)

Bedroom Four 7'6" x 15'5" (2.3 x 4.7)

