





LAUNCH DAY 18th JUNE CALL TO BOOK YOUR APPOINTMENT

Having been a cherished family home for many years we are pleased to offer this light and airy detached house.

Now requiring general refurbishment the house sits on a generous plot and has been extended to the side and rear but there is room for further extension subject to obtaining the usual consents.

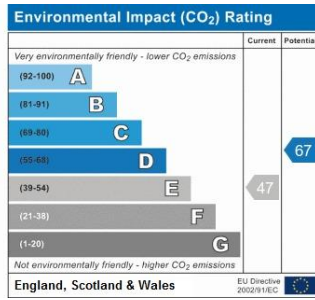
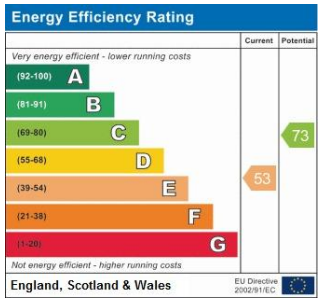
Features include a good sized dining room with picture windows overlooking the substantial rear garden, three further reception rooms and a fitted kitchen with access to the utility room. The first floor boasts four bedrooms with two bathrooms both fitted with modern white suites.

The garden is very large for this type of property, slopes away from the house and comprises several terraces which are mainly laid to lawn. Privacy is provided by a variety of mature trees and shrubs.

The location is excellent being within half a mile of Bullers Wood School, less than a mile from Chislehurst and Bickley stations.

Call to book your viewing on this end of chain property without delay.

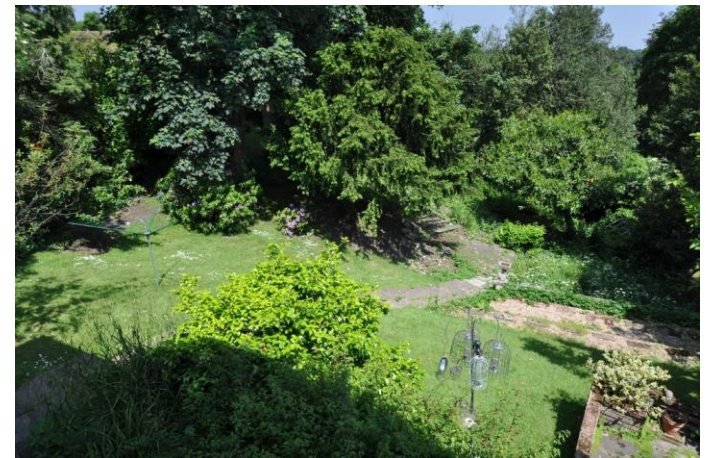




Please refer to

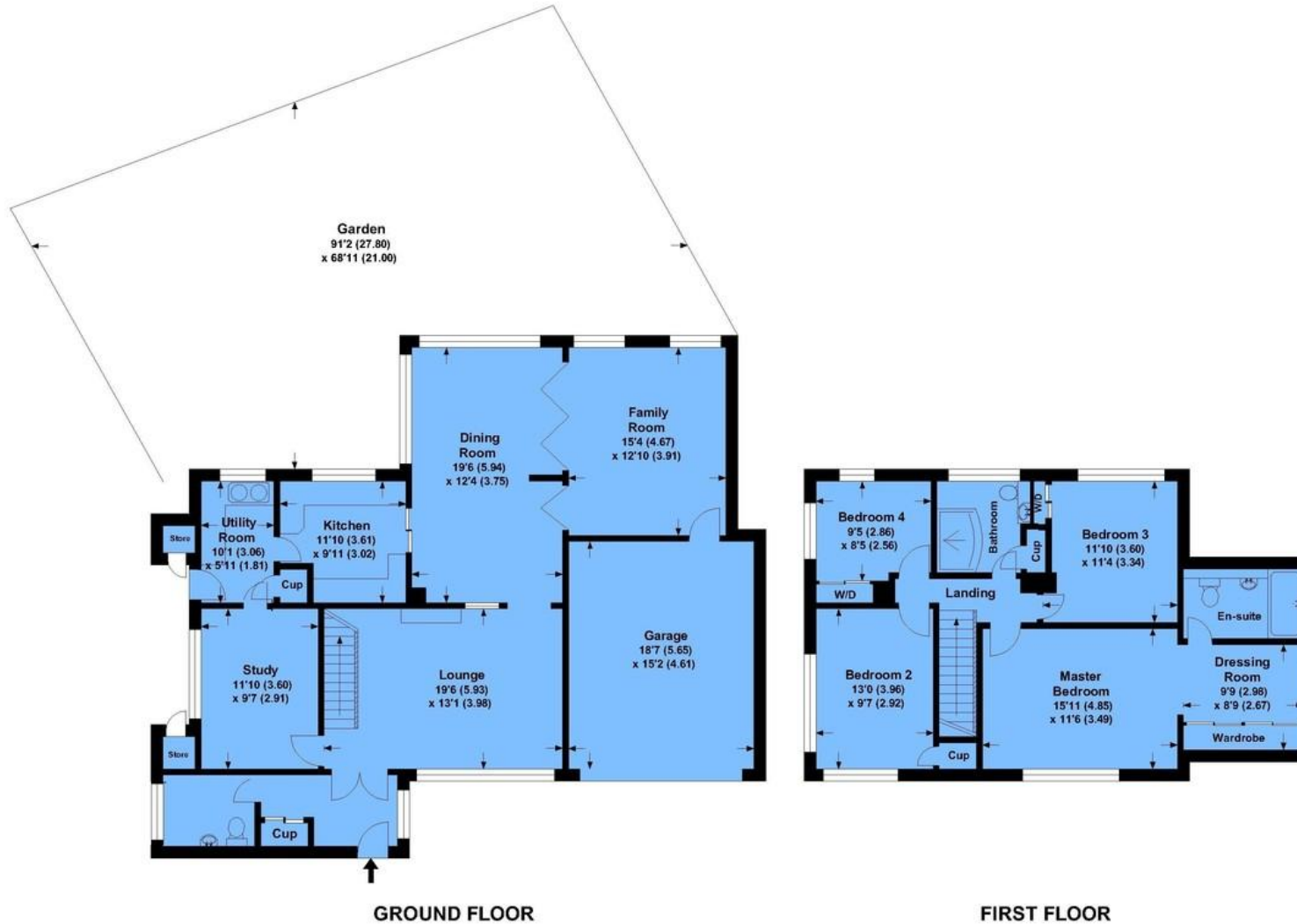
www.jdmestateagents.com

to view our full area guides



The Spinneys

APPROX. GROSS INTERNAL FLOOR AREA 2305.00 SQFT / 214.14 SQM. INC GARAGE.



This is for guidance only, not to scale and must not be relied upon as a statement of fact.
Attention is drawn to the notice on these particulars.

