





We are pleased to offer to the market this spacious four bedroom detached family home located in a popular residential area of Bickley, within approximately 0.5 of a mile of Bickley station with services to London Victoria and Blackfriars.

The property has been partly refurbished so there is still scope to add one's own personal touch. Notable features include polished parquet flooring to the entrance hall as well as the principal reception rooms. The lounge is a generous size and features an attractive contemporary limestone fireplace plus interconnecting doors to the dining room and a modern newly fitted kitchen completes the ground floor. To the first floor there are four good sized bedrooms, the master bedroom having the benefit a newly fitted shower room. The family bathroom has also undergone refurbishment recently.

To the front, the property offers a large garage together with off street parking for up to three vehicles whilst to the rear there is a compact lawned garden with shrub borders.

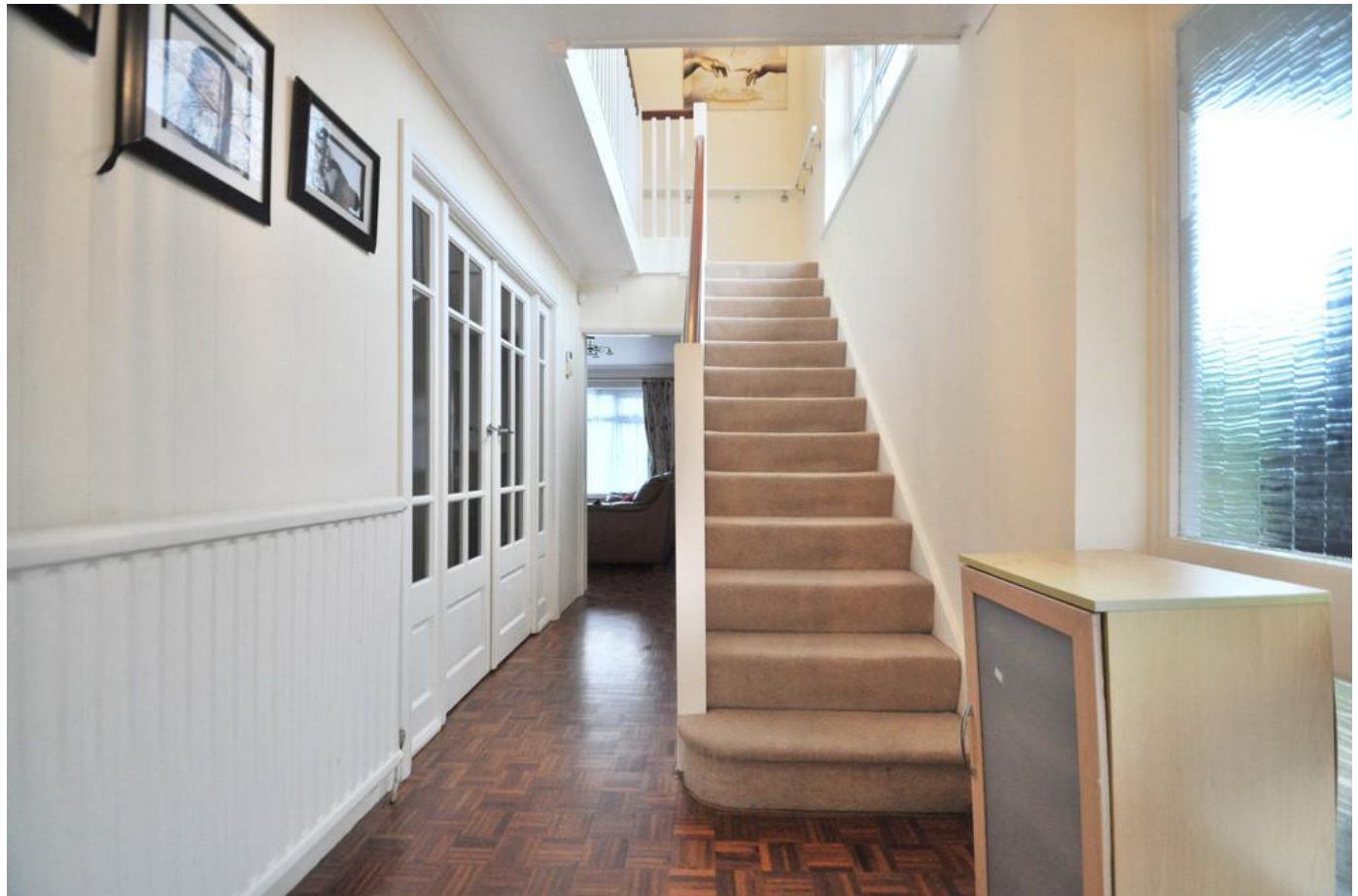
There is an excellent range of schools in the district including Bishops Justus School, Buller's Wood School, Bromley High, Bickley Park Nursery and Pre Prep school, St George's C of E Primary and Raglan Road Primary.

Viewing is highly recommended.



Energy Efficiency Rating		Current	Potential
Very energy efficient - lower running costs			
(92-100) A			
(81-91) B			
(69-80) C			
(55-68) D			
(39-54) E			
(21-38) F			
(1-20) G			
Not energy efficient - higher running costs			
England & Wales		69	75
EU Directive 2002/91/EC			

Environmental Impact (CO ₂) Rating		Current	Potential
Very environmentally friendly - lower CO ₂ emissions			
(92-100) A			
(81-91) B			
(69-80) C			
(55-68) D			
(39-54) E			
(21-38) F			
(1-20) G			
Not environmentally friendly - higher CO ₂ emissions			
England & Wales		65	71
EU Directive 2002/91/EC			



Please refer to

www.jdmestateagents.com

to view our full area guides



Burford Road

APPROX. GROSS INTERNAL FLOOR AREA 1465.18 SQFT / 136.12 SQM.EX GARAGE



This is for guidance only, not to scale and must not be relied upon as a statement of fact.
Attention is drawn to the notice on these particulars.

