





Guide Price £787,500

A deceptively spacious four bedroom, two bathroom detached property situated on a corner plot and offered to the market as end of chain and located in an ideal location for the much sought after Parish Church of England Primary school.

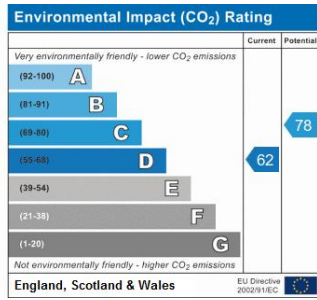
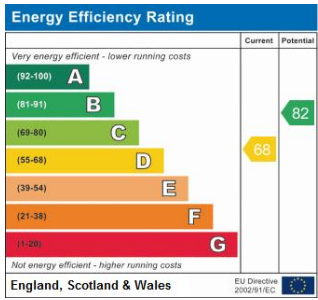
The ground floor accommodation comprises a 28' living/dining room with doors to the rear and also through to the extended kitchen/breakfast room which is fitted with a full range of wall and base units and a large range style cooker. A downstairs cloakroom and access to the integrated garage completes the accommodation.

To the first floor are four good sized bedrooms, an ensuite shower room off the master bedroom and a family bathroom fitted with a bath, wc, sink and separate shower cubicle.

To the front and rear are well tended gardens with immaculately manicured lawns and well stocked flower beds. A large patio at the rear also provides the ideal spot to enjoy the garden.

The property benefits from a large integrated garage in addition to off street parking.



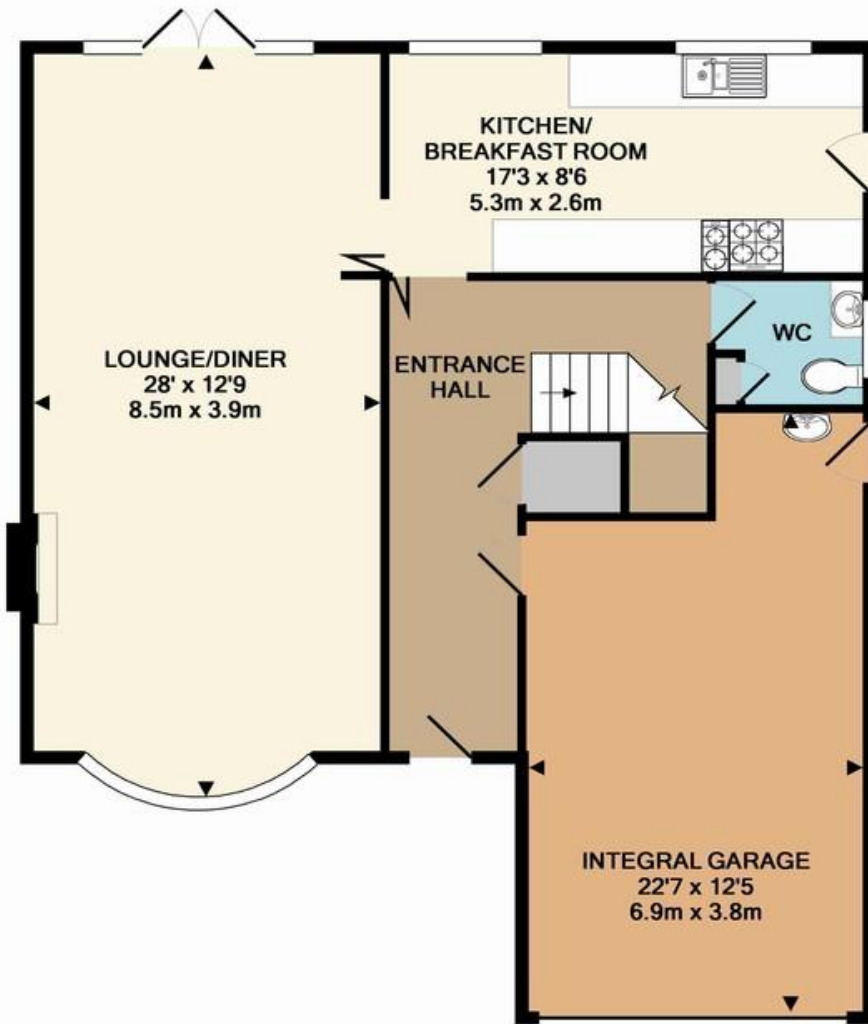


Please refer to

www.jdmestateagents.com

to view our full area guides





GROUND FLOOR
APPROX. FLOOR
AREA 920 SQ.FT.
(85.4 SQ.M.)



1ST FLOOR
APPROX. FLOOR
AREA 682 SQ.FT.
(63.3 SQ.M.)

TOTAL APPROX. FLOOR AREA 1601 SQ.FT. (148.8 SQ.M.)

Whilst every attempt has been made to ensure the accuracy of the floor plan contained here, measurements of doors, windows, rooms and any other items are approximate and no responsibility is taken for any omission, or mis-statement. This plan is for illustrative purposes only and should be used as such by any prospective purchaser. The services, systems and appliances shown have not been tested and no guarantee as to their operability or efficiency can be given

Made with Metropix ©2016

