





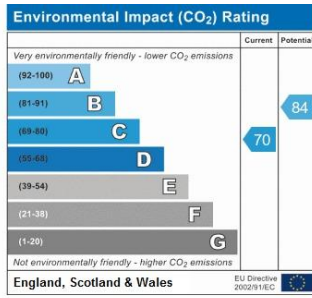
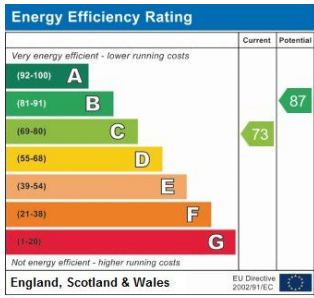
Jdm are pleased to offer to the market this four bedroom detached property situated at the end of a cul-de-sac, in a popular location for Darrick Wood and Farnborough Village schools. The property benefits from a spacious conservatory and an extended tandem garage with workshop.

Built in the early eighties, the spacious accommodation comprises: tiled entrance hallway, downstairs cloakroom, kitchen with space for appliances, separate dining room leading from the kitchen and double doors through to the good sized lounge. From the lounge there are patio doors into the conservatory. An integral door leads through to the tandem garage and workshop.

To the first floor are four well proportioned bedrooms, the master having sliding mirrored wardrobes and a newly fitted ensuite wet room. Bedrooms two and three benefit from mirrored sliding wardrobes and fitted dressing tables and bedroom four has a built in cupboard with sliding mirrored wardrobes. The family bathroom is also newly fitted with white furniture, vanity sink unit and shower over bath. The boiler has been renewed and the hot water cylinder in the last year.

To the rear of the property is a delightfully manicured secluded garden with patio area and lawn. The driveway to the front can accommodate up to four cars. Viewing comes highly recommended.





Address:
Bridle Way



Please refer to

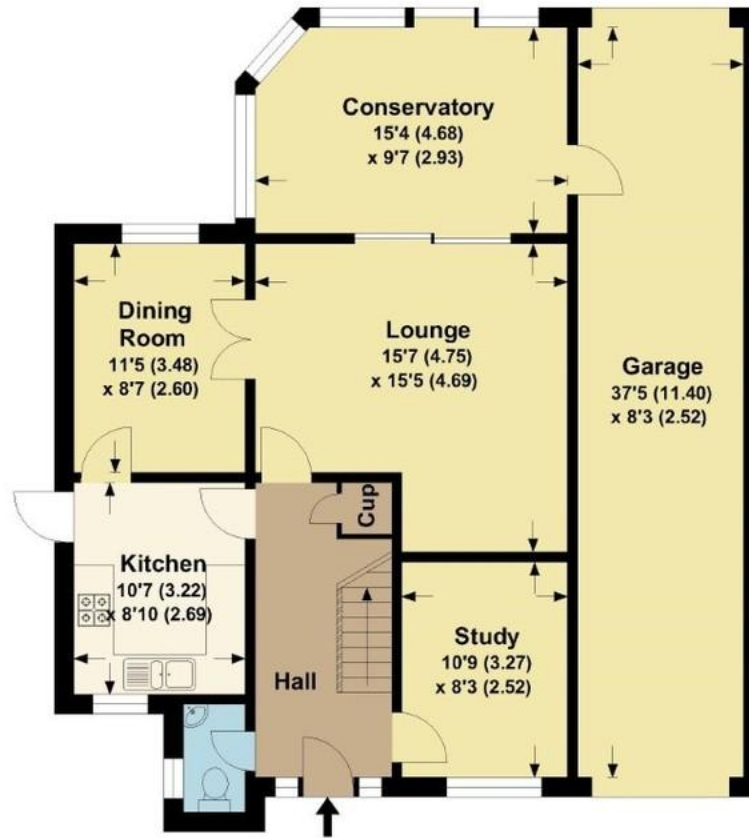
www.jdmestateagents.com

to view our full area guides



Bridle Way

APPROX. GROSS INTERNAL FLOOR AREA 1683.18 SQFT / 156.37 SQM.



GROUND FLOOR



FIRST FLOOR

This is for guidance only, not to scale and must not be relied upon as a statement of fact.
Attention is drawn to the notice on these particulars.

