

## Lentworth Drive, Walkden, M28 3EX



**£800 Per calendar month**

Lentworth Drive is set in a new more modern suburban residential area with like homes and manicured lawns, all very similar in style which makes this pleasing to the eye. These newer domains are perfect for family living and are generally low traffic areas, there is also real homely feel to neighbourhood. You may feel miles away from it all on this newer housing development but you are placed well for access to the M61, for public transport there are bus routes running along Worsley Road but more can be found in Walkden Town Centre. For your daily conveniences you have giant 24 hour supermarkets on hand along with familiar high street shops and the odd well known take away / fast food restaurant which we all need once in awhile. If you need to get out for some fresh air then Blackleach Country Park and Reservoir are nearby. Your neighbouring town is the hugely sought after Worsley Village and if you have a car and fancy a drive you can be out in the hills of Bolton in no time. Now for the property, its a roomy detached home offering tonnes of positives, as you enter you are greeted by the open living / dining room with patio doors that lead you to the rear garden, the kitchen is super and is really well sized with a utility area, there are four bedrooms to choose from, a family bathroom and an en suite shower room. Outside you have a lawned rear garden which will see so much use over the coming sunnier months, a small front garden and a garage. Lentworth Drive is a true family home where you can relax away but have it all close by. AVAILABLE BEGINNING OF APRIL! \*FEES APPLICABLE PLEASE CONTACT THE OFFICE\*

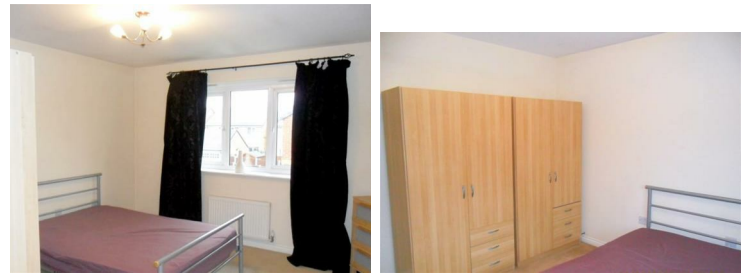
### Living Room



### Kitchen / Utility Area



### Bedrooms



### Dining Area



### En suite





