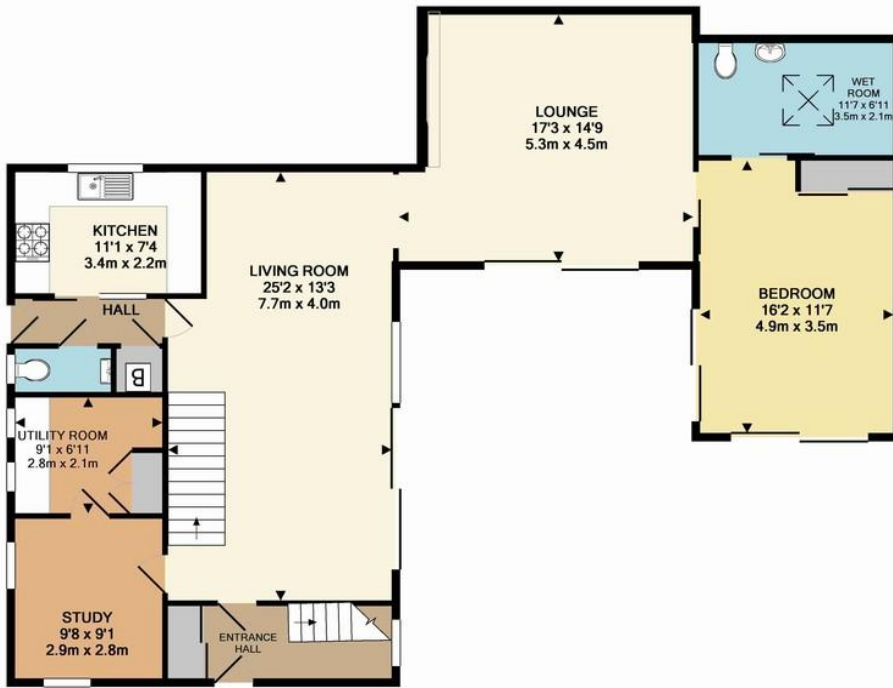


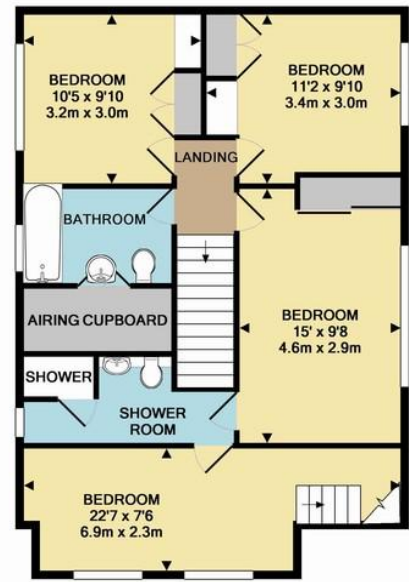


Homewood Crescent | Chislehurst | £2,250 pcm

Unique architect designed 4/5 bedroom, 3 bathroom detached house close Farringtons School & Scadbury Country Park, & affording easy access to Chislehurst, Sidcup & A20 for London & M25. Comprising spacious living/dining room, sitting room, & third reception/double bedroom, all with access to attractive walled garden, modern kitchen & utility room with appliances, study & large ground floor shower room. To first floor, master bedroom with modern en suite shower room, two further double bedrooms, & a fourth double bedroom accessed via separate staircase with access to master en suite, useful for guest use. GCH & DG. Offered unfurnished, available mid-September. Council tax Band F. EPC Rating E



GROUND FLOOR
APPROX. FLOOR
AREA 1167 SQ.FT.
(108.4 SQ.M.)



1ST FLOOR
APPROX. FLOOR
AREA 702 SQ.FT.
(65.2 SQ.M.)

TOTAL APPROX. FLOOR AREA 1869 SQ.FT. (173.6 SQ.M.)

Whilst every attempt has been made to ensure the accuracy of the floor plan contained here, measurements of doors, windows, rooms and any other items are approximate and no responsibility is taken for any error, omission, or mis-statement. This plan is for illustrative purposes only and should be used as such by any prospective purchaser. The services, systems and appliances shown have not been tested and no guarantee as to their operability or efficiency can be given.

Made with Metropix ©2016

Contact Details

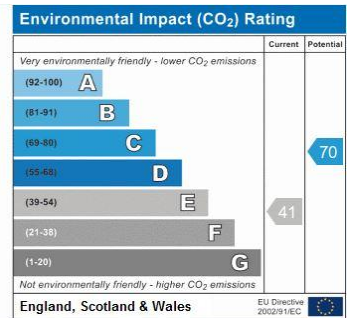
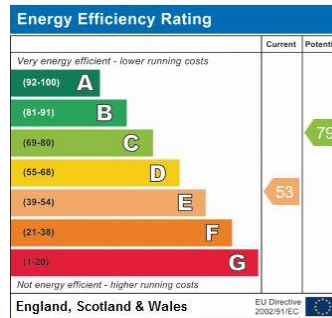
36 Station Square
Petts Wood
Orpington
Kent
BR5 1NA

www.jdmestateagents.com

lettings@jdmlettings.com

01689 838040

Please refer to our website to see our full Area Guides.



IMPORTANT NOTICE: Every effort has been made to ensure the accuracy of these details however they form no part of any contract and are issued without responsibility on the part of the agents or landlord. Any intending tenant should satisfy themselves by inspection as to the correctness of each statement. Photographs may show only certain parts and aspects of the property at the time when the photographs were taken. We recommend that all information provided is verified by yourselves on inspection.

