



Chislehurst BR7
£560,000

jdm
ESTATE AGENTS

Description:

Just 0.4 of a mile from the popular Edgebury School is this stunning four bedroom, two bathroom terraced home with driveway to the front and garden to the rear.

In a quiet crescent this house has been designed and presented in a contemporary style, and has some beautiful features. Accommodation includes a sitting room with bay window to the front with New England style shutters, open plan kitchen dining room to the rear, which is stunning, with clean lines, a central island housing utilities with black granite worktop, solid oak flooring runs throughout the ground floor.

To the first floor there are two double bedrooms plus a single bedroom, currently used as a study with built in units, serviced by the family bathroom. On the top floor is a stunning master bedroom with bi folding doors with a Juliette balcony giving stunning views. Fitted Wardrobes and open to a fabulous ensuite shower room which has a unique design. You must see this property to appreciate the thought that has gone into the design and no expense spared. Outside to the rear is the private garden, not overlooked with decked patio and storage which continues the flow from the kitchen, and to the front there is a brick paved driveway. Viewing essential.



Directions: From the ponds on the common proceed along Green Lane towards Eltham take the fourth turning on the right Westhurst Drive and the property can be found along on the right hand side.

Tenure: Freehold

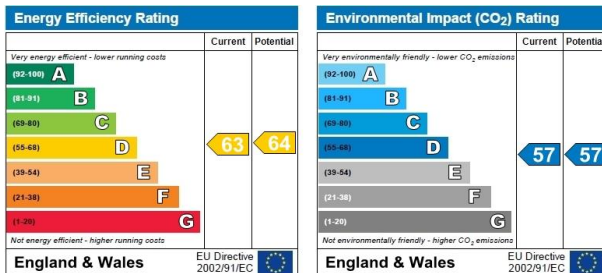
Council Tax Band: E £1,619.62

Local Authority: London Borough of Bromley



Room Dimensions:

Entrance Hall	
Lounge	13'9 into bay x 11'11
Kitchen/Dining Room	18'1 x 12'
First Floor Landing	
Bedroom 2	14'4 into bay x 10'11 max
Bedroom 3	12'2 x 10'4 max
Bedroom 4	8'8 max x 7'1 max
Bathroom	
Second Floor	
Master Bedroom/Shower	16'9 max x 16'max
Plus	6'6 x 5'11
Outside	
Garden Store	
Garden	38'6 x 18'8

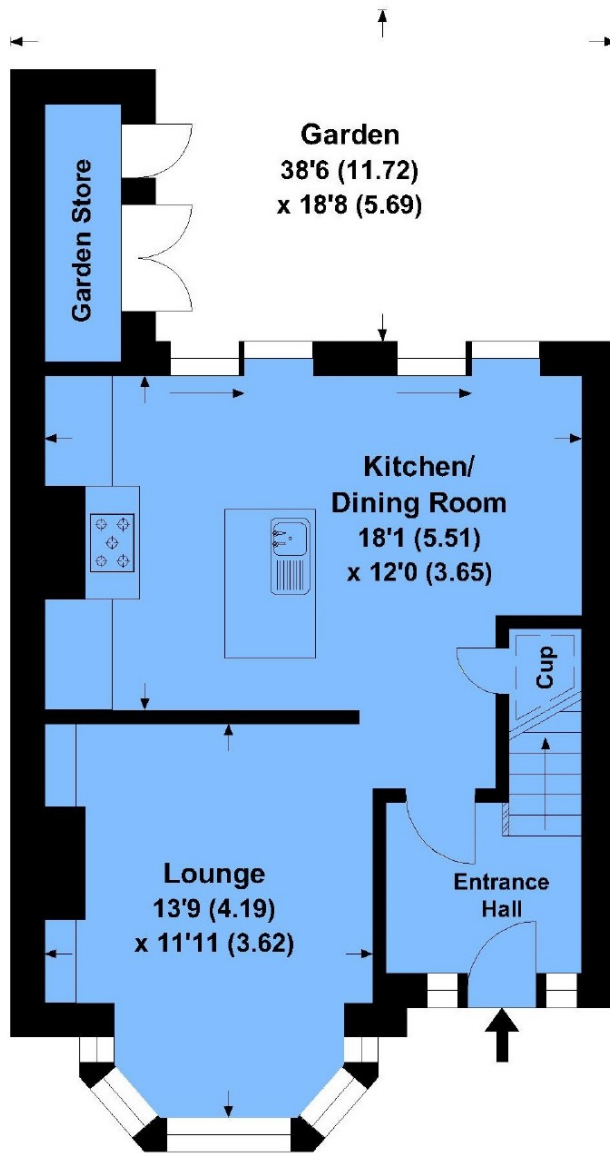
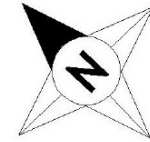


Please contact the branch for a complete copy of the EPC document

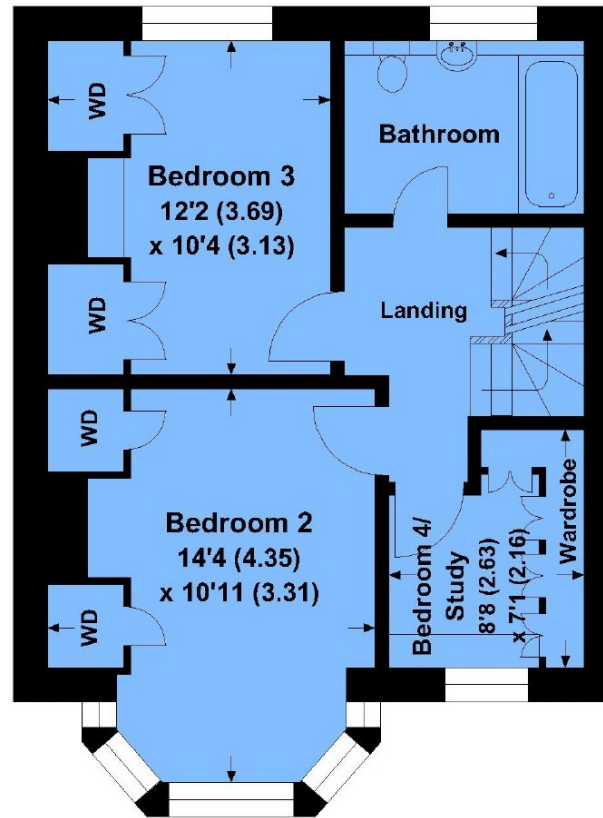


Westhurst Drive

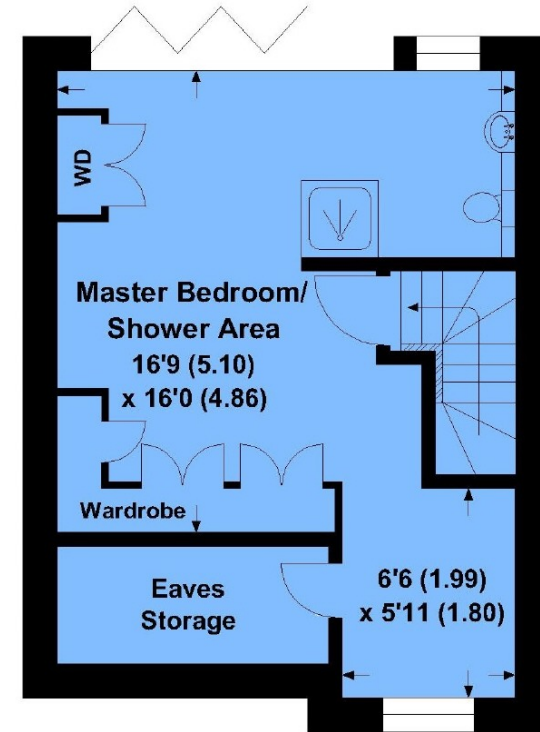
APPROX. GROSS INTERNAL FLOOR AREA
1203.40 SQFT / 111.80 SQM.



GROUND FLOOR



FIRST FLOOR



SECOND FLOOR

This is for guidance only, not to scale and must not be relied upon as a statement of fact.
Attention is drawn to the notice on these particulars.

IMPORTANT NOTICE

jdm must advise that although every effort has been made to ensure the accuracy of these details they form no part of any contract and are issued without any responsibility on the part of the agents or vendor. Photographs may have been taken using a wide angle lens. Any floor plans shown are not to scale. All measurements, walls, doors, windows, fittings and appliances, their sizes and locations are shown conventionally and are approximate only. Any reference to alterations or particular use of the property wherever stated, is not a statement that planning, building regulations or other relevant consent has been obtained. We have not carried out a survey of the property nor have we tested any services, systems or appliances at this property. We strongly recommend that all the information we provide is verified by yourselves on inspection and by your Surveyor and Solicitor or Legal Adviser.

jdm recommends Independent Mortgage Advice. For help with your mortgage please contact your local branch. Your home may be repossessed if you do not keep up repayments on your mortgage. Written quotations available on request.

jdm Chislehurst

41 High Street, Chislehurst, Kent BR7 5AE

020 8325 8000

e:ch@jdmonline.com



jdm
ESTATE AGENTS