



## Chatsworth Gardens, Harrow

An unusual 4 bed three storey 2006 built semi with 23'3 x 10'4" Lounge/ Dining Room. 17'5" x 16'6" Lounge, 11'11" x 10' kitchen, 4th bedroom downstairs with en suite shower/wc, downstairs cloakroom, Bedrooms 1 & 2 with en suite shower rooms, luxury bathroom/wc, underfloor heating, air conditioning, gas central heating, double glazed, approx 50' garden, 17'2" x 16'9" workshop, front parking for 3-4 cars via remote iron gates.

Asking Price Of £650,000

Freehold





- LARGER THAN AVERAGE 2006 BUILT SEMI
- 4 BEDROOMS ON 3 FLOORS
- 3 BATHROOMS
- 24'0 x 11'0 LOUNGE /DINING ROOM
- 17'4 x 12'9 LOUNGE
- 12'3 x 10'0 KITCHEN
- CLOAKROOM, GAS CENTRAL HEATING
- AIR CONDITIONING, UNDERFLOOR HEATING
- PARKING FOR 4 CARS WITH REMOTE GATE
- MUST BE SEEN!!!

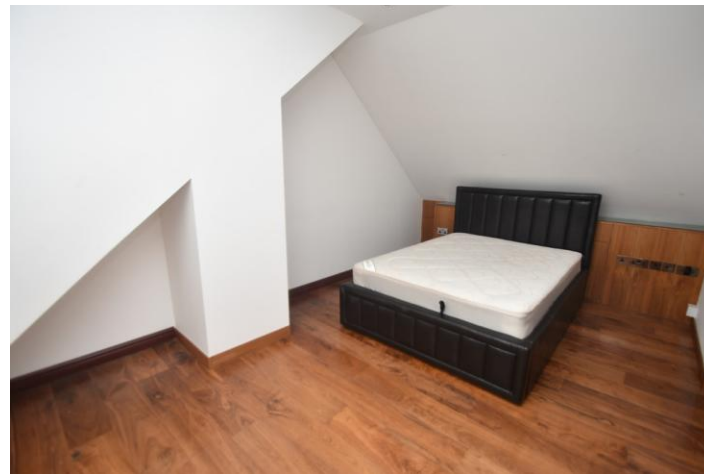
## Property Description

Luxurious four bedroom gated semi detached house with parking for 3-4 cars, built 2006

This large property has air conditioning and double glazing, the ground floor features marble tiled floors and underfloor heating, the fitted modern kitchen has a range of wall and base units with marble worktops, stainless steel undermounted sink with mixer tap, built in gas hob with stainless steel extractor over, built in double oven & microwave, fridge/freezer with ice dispenser, washer drier and dishwasher included. The dining room features display lighting, sliding hardwood doors to garden. Four bedrooms on three floors. The property has three shower rooms and a ground floor cloakroom. Garden with patio area and a solid built storage room.

In addition this property includes Sonos Sound system, quality built in wardrobes.





Dimensions:

Reception One: 23'3" x 10'4"

Reception Two: 17'5" x 16'6"

Kitchen: 11'11" x 10'

Bedroom One: 26'12" x 13'

Bedroom Two: 12'4" x 10'

Bedroom Three: 16'10" x 5'6"

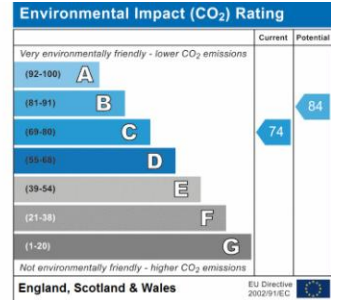
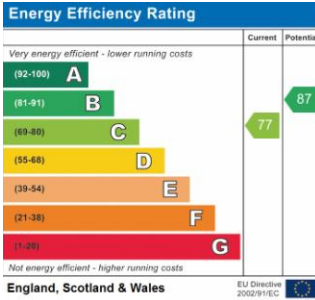
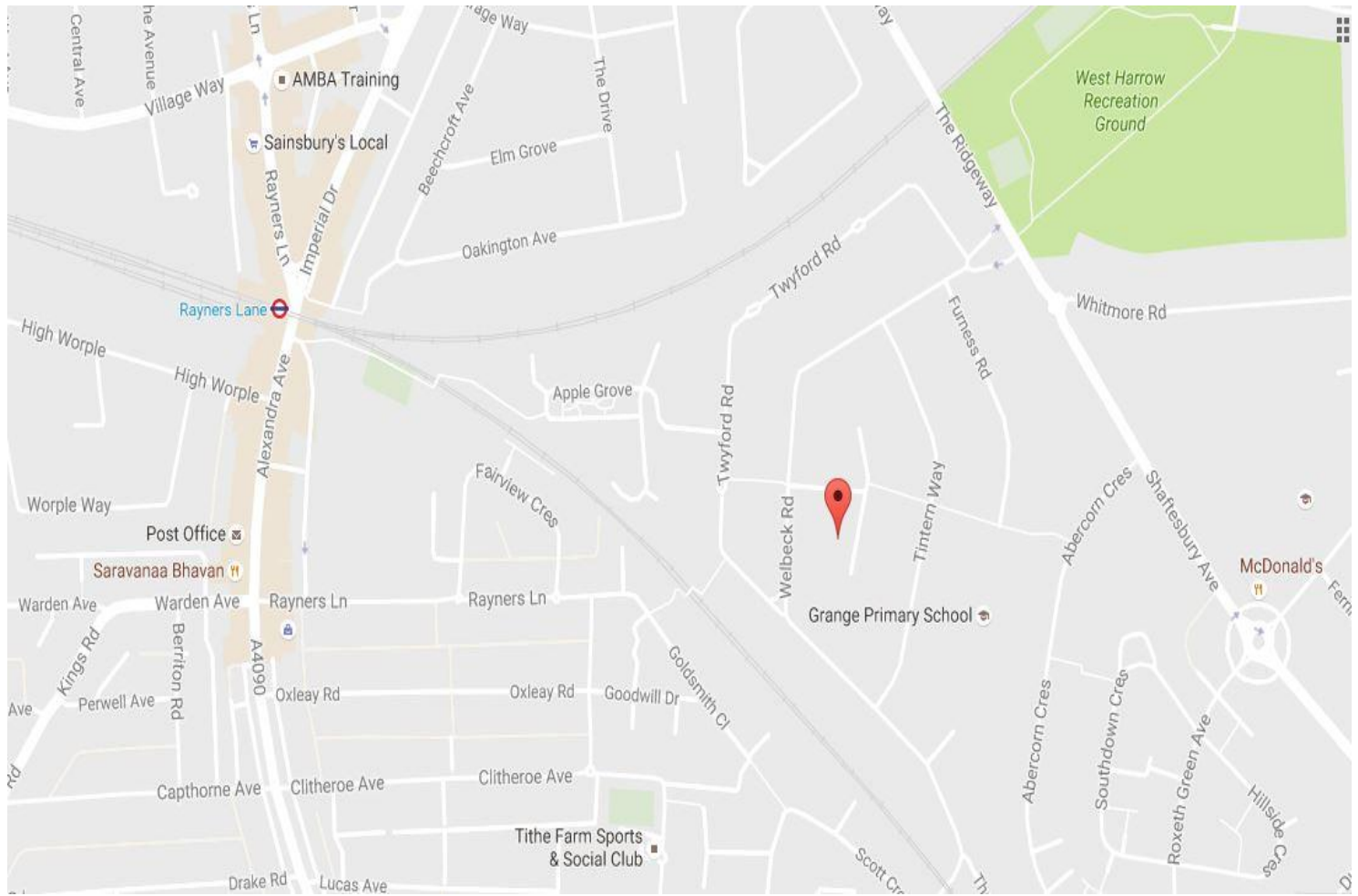
Bedroom Four: 14'11" x 12'5"

Garden Store: 17'2" x 16'9"

**MORTGAGES ARRANGED AT COMPETITIVE RATES**  
(Your home is at risk if you do not keep up repayments on the mortgage of your home or any other loans secured on it).

These details are set out as a guide only and do not form part of any contract. As the seller's agent we have not carried out a structural survey and are not conveyancing experts and as such we cannot comment on the condition of the property, or issues relating to title or other legal matters that may affect this property, unless we have been made aware of such matters. Interested parties should employ their own professionals to make such enquiries before making any transactional decisions. Items shown in any photos are for illustration purposes only and may not be included in the sale. Purchasers should refer to the fixtures and fittings list obtained by their solicitor. We have not tested fittings, appliances or central heating systems, where applicable. All measurements are approximate.





269 Northolt Road, South Harrow, Middlesex, HA2 8HS  
 Tel: 020 8422 5222 Fax: 020 8422 4221 | www.davidconway.co.uk  
 info@davidconway.co.uk  
 @dconwayandco

