





GUIDE PRICE £725,000 - £750,000

Jdm are delighted to offer to the market this extended and superbly presented four bedroom semi-detached house. Situated in the ever popular Petts Wood East, the property offers access to Petts Wood mainline station serving an array of London termini. Perry Hall and Crofton Primary school have both recently been rated "Outstanding" by Ofsted, are also ideally located for The Corner House.

The accommodation comprises the hallway and lounge/diner, both benefitting from solid oak flooring, as well as the modern fitted kitchen. The impressive extension has provided a downstairs WC and a further two reception rooms which are separated by bi-folding doors, providing the perfect space for entertaining.

To the first floor is the modern, marble tiled bathroom suite with separate shower. Four well-proportioned bedrooms, three of which can comfortably hold double beds can also be found.

The mainly laid to lawn garden and summer house with water and electricity supply can be found to the rear. Off street parking for various cars can be found to the front.

The current owners have applied for planning permission for a further single story extension and a loft conversion.

Internal viewing comes highly recommended and must be viewed internally to be fully appreciated.



EPC TO FOLLOW

Please refer to

www.jdmestateagents.com

to view our full area guides



Willett Way, BR5

Approximate Gross Internal Area
152.4 sq m / 1640 sq ft

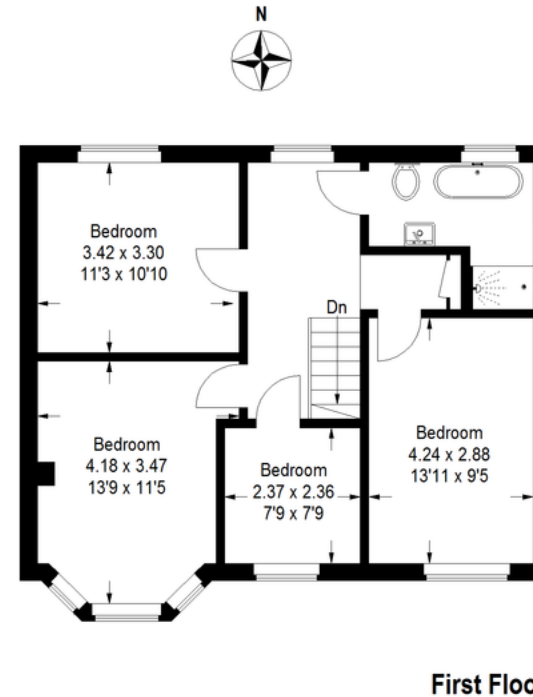
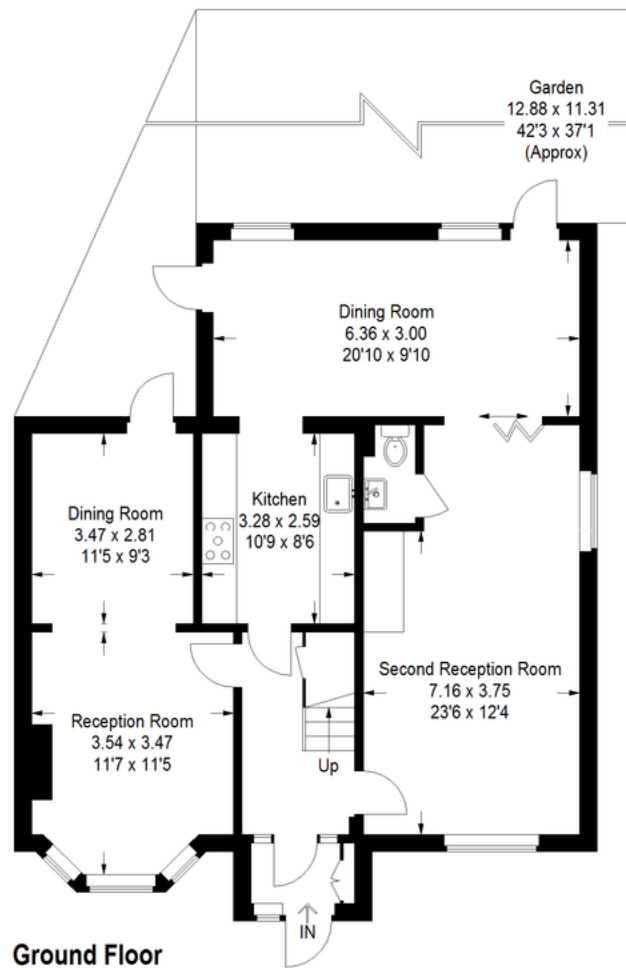


Illustration for identification purposes only, measurements are approximate, not to scale.
FloorplansUsketch.com © 2016 (275565)

