



Cheshunt: Tel: 01992 621116

www.jrpropertyservices.co.uk

Cuffley: Tel: 01707 872111



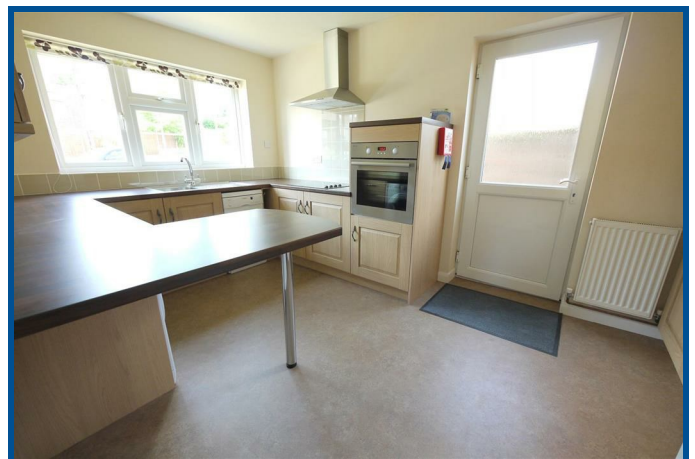
VICARAGE CLOSE NORTHAW

Situated in a quiet cul-de-sac a nicely refurbished Georgian style detached house in the heart of the Northaw Village we present a four bedroom detached house featuring large through lounge/dining room, study, kitchen breakfast room, Downstairs cloakroom, EN Suite to master bedroom, Garage and Carport. Price includes a gardener to maintain the the gardens.

- DOUBLE GLAZED
- STUDY
- ENSUITE TO MASTER
- PRICE INCLUDES GARDENER
- GAS CENTRAL HEATING
- KITCHEN/BREAKFAST ROOM
- LANDSCAPED REAR GARDEN
- LARGE THROUGH LOUNGE/DINING ROOM
- 4 BEDROOMS
- EXCELLENT VIEWS OF LOCAL COUNTRYSIDE

£2,150 NULL

VIEWING RECOMMENDED!



Cuffley: 24 Station Road, Cuffley, Herts EN6 4HT
email: cuffley@jrpropertyservices.co.uk

Cheshunt: 56 Turners Hill, Cheshunt, Herts EN8 8LQ
email: cheshunt@jrpropertyservices.co.uk

All photographs shown are for illustration only and may show items that are not for sale or included in the sale of the property. Please note that all measurements have a 5% tolerance level. 'None of the statements contained in these particulars as to this property are to be relied on as statements of representation of fact!'



Opaque double glazed entrance door to:-

HALLWAY

Radiator. Stairs to first floor. Doors to:-

DOWNSTAIRS CLOAKROOM

Part tiled walls. Opaque window to the front. Suite comprising low flush WC and pedestal wash hand basin.

THROUGH LOUNGE/DINING ROOM

27'8 x 14'4 narrowing to 12'2

Two double radiators. Double glazed Georgian style window to the rear. Georgian style double glazed french doors to the garden. York stone feature fireplace with tiled hearth. Coving to ceiling.



STUDY

12'5 x 10'3

Double glazed Georgian style Oriel bay window to the front. Radiator. Coving to ceiling. under stairs storage cupboard.



KITCHEN/BREAKFAST ROOM

14'6 x 8'10

Double glazed Georgian style window to the front. Double glazed door to the side. Range of fitted wall and base units with wood effect work surfaces over incorporating stainless steel sink and drainer with mixer tap. Integrated electric oven and ceramic hob with extractor fan over. Plumbing for washing machine and dishwasher. Free standing fridge freezer. Tiled splash backs. Double radiator.



FIRST FLOOR

LANDING

Double glazed window to the side. Built in storage cupboard with water tank. Access to loft. Doors to:-

BEDROOM 1

15'6 x 11'7 to wardrobes

Double glazed Georgian style window to the rear. Radiator. Door to:-



ENSUITE

Opaque double glazed window to the side. Heated towel rail. Extensively tiled walls. Suite comprising: Concealed cistern W.C. vanity top wash hand basin with cupboards under, shower cubicle.



BEDROOM 2

14'0 x 11'7

Georgian style double glazed window to the rear. built in wardrobes. Radiator.

BEDROOM 3

10'4 x 10'2

Double glazed Georgian style window to the front. Built in wardrobes. Radiator.

BEDROOM 4

9'9 x 9'4

Double glazed Georgian style window to the font. Built in wardrobes. Radiator.

FAMILY BATHROOM

Opaque double glazed window to the front. Heated towel rail. Extensively tiled walls. Suite comprising: Large shower cubicle, top flush WC, corner wash hand basin. Inset spotlights.



OUTSIDE

THE GARDENS

65' rear garden

Landscaped rear garden with curved edge patio, remainder set to lawn with mature flower borders. Fish pond.



GARAGE

15'9 x 8'3

Barn doors with opaque window. access to front via driveway.

CARPORT

21'10 x 8'4

Double width metal gates. External water tap.