



**2 Huntingdon Gardens, Christchurch, Dorset, BH23 2TW
£1,395 Per Calendar Month**



DETACHED FOUR BEDROOM FAMILY HOUSE IN A SOUGHT AFTER LOCATION

This four bedroom detached house has accommodation consisting of a good sized lounge and separate dining room, kitchen and cloakroom on the ground floor.

Upstairs there are two spacious double bedrooms with handy fitted wardrobe space, two single bedrooms and a family bathroom with shower over bath.

As well as gas central heating there is UPVC double glazing throughout.

Outside the front garden wraps around the corner plot. There is a driveway providing parking for up to three cars which leads to the detached garage and rear garden, which is mostly laid to lawn with some paving and is enclosed by walling and fencing.

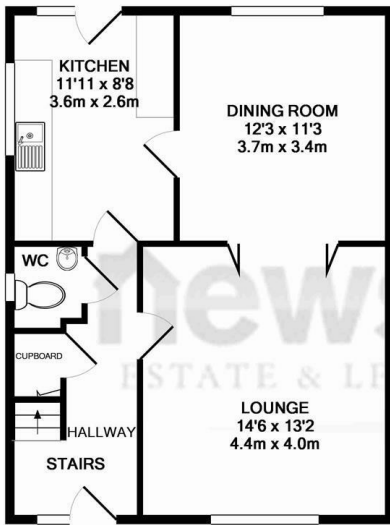
Available December 2015

Deposit £1500

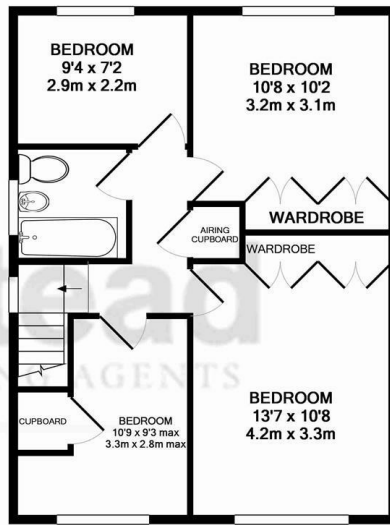
Pets considered (no dog though)

Unfurnished

Long-term rental



GROUND FLOOR
APPROX. FLOOR
AREA 536 SQ.FT.
(49.8 SQ.M.)



1ST FLOOR
APPROX. FLOOR
AREA 536 SQ.FT.
(49.8 SQ.M.)

TOTAL APPROX. FLOOR AREA 1073 SQ.FT. (99.7 SQ.M.)

Whilst every attempt has been made to ensure the accuracy of the floor plan contained here, measurements of doors, windows, rooms and any other items are approximate and no responsibility is taken for any error, omission, or mis-statement. This plan is for illustrative purposes only and should be used as such by any prospective purchaser. The services, systems and appliances shown have not been tested and no guarantee as to their operability or efficiency can be given
Made with Metropix ©2015

You may download, store and use the material for your own personal use and research. You may not republish, retransmit, redistribute or otherwise make the material available to any party or make the same available on any website, online service or bulletin board of your own or of any other party or make the same available in hard copy or in any other media without the website owner's express prior written consent.