



Shoreham-By-Sea, BN43 6AZ

£399,950



Coral Close

Shoreham-By-Sea,

A beautiful and versatile family home set in this prime location within the Orchard Gate development which is already proving to be a friendly and safe neighborhood, and lies within the catchment area for St Nick's and Buckingham Park schools .

On-site is a children's play area and you are within five minute's walk from Buckingham Park.

This stunning home further boasts spacious and bright modern fitted kitchen with a suntrap of a conservatory at the rear leading into a South facing rear garden. This also includes two allocated car spaces.

The home is offered to the market in fantastic condition being light and airy with neutral decoration throughout.

For more information or to arrange a viewing, please contact Shore Estates on 01273 830555.



- Built in 2012, NHBC Guarantee
- Four Double Bedrooms
- Beautiful Modern Fitted Kitchen/Diner
- South Facing Rear Garden
- Large Rear Conservatory
- Stunning Modern Fitted Kitchen
- Allocated Parking
- Separate Lounge

Front Garden

Entrance Hall

Cloakroom

Modern Fitted Kitchen & Dining Room

14'11" 14'4" (4.57m 4.39m)

Conservatory

Bedroom Four

9'1" 8'7" (2.77m 2.62m)

First Floor Landing

Separate Lounge

15'5" 12'4" (4.72m 3.76m)

Bedroom Two

14'4" 8'0" (4.39m 2.46m)

Family Bathroom

Second Floor Landing

Bedoom One

15'5" 14'4" (4.72m 4.39m)

En-Suite

Bedroom Three

14'4" 8'0" (4.39m 2.46m)

South Facing Rear Garden

Coucil Tax Band D

Allocated Parking For Two Cars



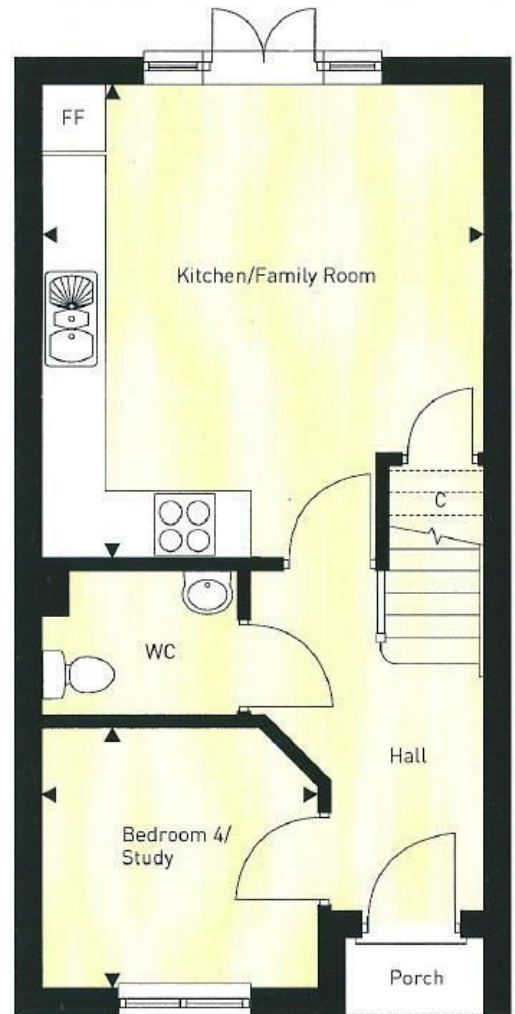
Shore House 1-2 Middle Street, Shoreham-by-Sea, West Sussex, BN43 5DP

t: 01273 830555

f: 01273 830550

e: office@shoreestates.co.uk

w: shoreestates.co.uk



sales • lettings • finance