



Cheshunt: Tel: 01992 621116

[www.jrpropertieservices.co.uk](http://www.jrpropertieservices.co.uk)

Cuffley: Tel: 01707 872111



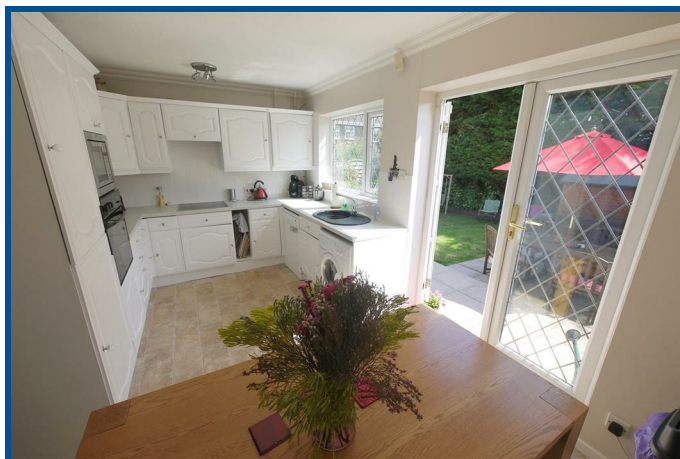
## SPICERSFIELD CHESHUNT

A deceptively spacious & very well presented Three/Four bedroom End of Terrace house. Features include a Double storey rear Extension. South Facing Garden. Garage En-Block. Parking to front and rear & a ground floor WC. Offered Chain Free! Early viewing advised.

- Chain Free
- Kitchen/Breakfast Room
- Family Bathroom
- Garage, Driveway & Parking
- Gas Heating & Double Glazing
- Separate Dining Room/Bed 4
- Ground Floor WC
- Lounge
- Three Double Bedrooms
- South Facing Rear Garden

**£365,000 FREEHOLD**

**VIEWING RECOMMENDED!**



Cuffley: 24 Station Road, Cuffley, Herts EN6 4HT  
email: [cuffley@jrpropertieservices.co.uk](mailto:cuffley@jrpropertieservices.co.uk)

Cheshunt: 56 Turners Hill, Cheshunt, Herts EN8 8LQ  
email: [cheshunt@jrpropertieservices.co.uk](mailto:cheshunt@jrpropertieservices.co.uk)

All photographs shown are for illustration only and may show items that are not for sale or included in the sale of the property. Please note that all measurements have a 5% tolerance level. 'None of the statements contained in these particulars as to this property are to be relied on as statements of representation of fact!'



### Entrance

Double glazed entrance door to:-

### Hallway

Inset spot lights to ceiling. Laminate wooden floor. Doors to:-

### WC

Leaded light window to front. Low flush WC. Wall mounted wash hand basin with tiled splash back. Radiator.



### Dining Room/Bedroom 4

18'7 x 7'4

Leaded light French doors to garden. Double radiator. Coving to ceiling. Inset spotlights. Laminate wooden floor.



### Lounge

17'11 x 15'

Leaded light bow window to front. Stairs to first floor with cupboard under stairs. Wall lights. Two radiator with decorative covers. Double doors to:-



### Kitchen

14'11 x 9'10

Leaded light double glazed window to rear. Double glazed leaded light French doors to garden. Wall and base fitted units with work surfaces. Sink with mixer tap and drainer. Ceramic hob with extractor. Built in oven and microwave. Built in fridge freezer. Plumbing for fridge freezer and dishwasher. Moulded coving to ceiling.



### Landing

Access to loft space. Built in airing cupboard. Doors to:-

### Bedroom 1

14'11 x 11' max

Leaded light double glazed window to front. Radiator. Mirror fronted fitted wardrobes.



### Bedroom 2

12'3 x 8'5

Leaded light double glazed window to rear. Moulded coving to ceiling. Fitted wardrobes.



### Bedroom 3

10'3 x 7'4

Two leaded light double glazed windows to rear. Mirror fronted fitted wardrobe. Coving to ceiling. Plumbing for radiator.



### Garden

36' x 33'

South facing. Patio paved area. Laid to lawn with shrub and flower borders. Timber shed with power and lighting. Water tap. Lighting.



### Bathroom

Low flush WC. Pedestal wash hand basin with mixer tap. Panel bath with mixer tap. Tiled enclosed shower cubicle. Ceramic tiled floor and walls. Inset spot lights to ceiling. Extractor fan.



### Garage

Up & over door.

