



PRINCE OF WALES TERRACE, KENSINGTON W8.

£2,900 per week

Spacious, recently refurbished penthouse apartment situated on the 4th floor of a portered period building. The property benefits from wooden floors, light and spacious rooms and modern amenities. This wonderful location almost opposite Kensington Gardens is ideal for families being moments from the park, shops and restaurants. Gloucester Road tube and High Street Kensington tube are nearby.

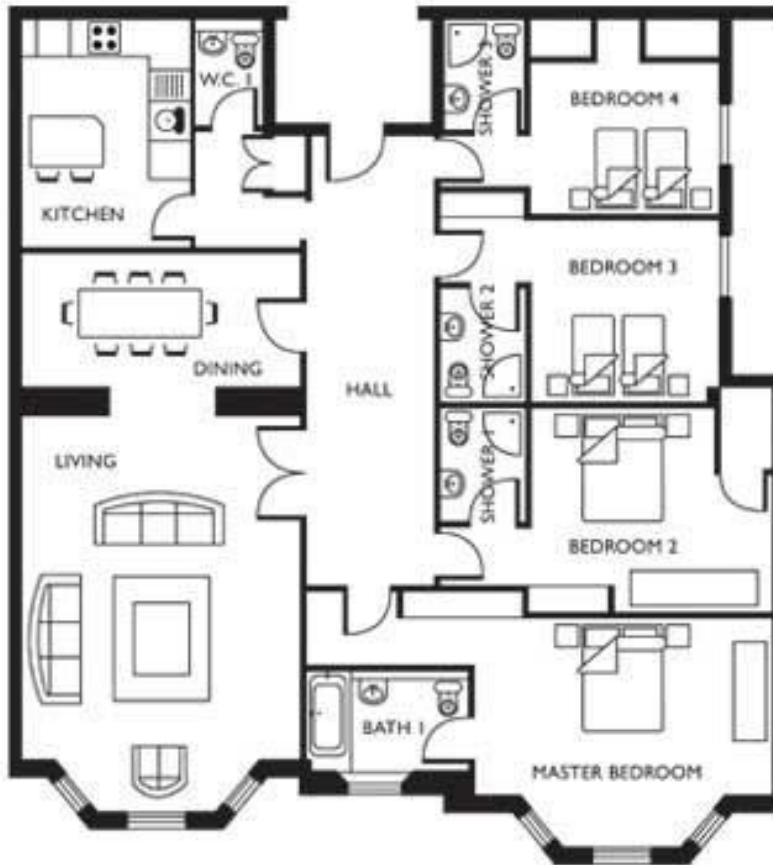
Details

- 5 Bedrooms
- 5 Bathrooms
- Guest Cloakroom
- Reception room
- kitchen
- Day porter
- Lift
- wood floors



Prince of Wales Terrace - London

Four Bedroom Apartment (1,746 sqft / 162 sqm)

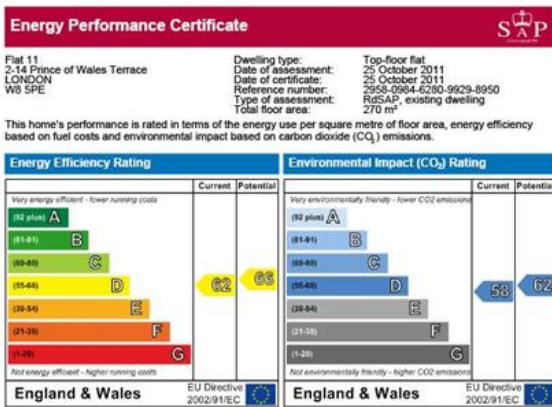


(Layout can change for this Apartment category)

Terms and Conditions

Available: Available Now For Long Let
Price: £2,900 per week

EPC Information



The energy efficiency rating is a measure of the overall efficiency of a home. The higher the rating the more energy efficient the home is and the lower the fuel bills are likely to be.

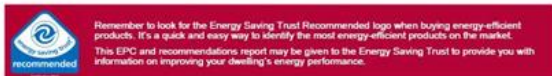
The environmental impact rating is a measure of a home's impact on the environment in terms of carbon dioxide (CO₂) emissions. The higher the rating the less impact it has on the environment.

Estimated energy use, carbon dioxide (CO₂) emissions and fuel costs of this home

	Current	Potential
Energy use	193 kWh/m ² per year	173 kWh/m ² per year
Carbon dioxide emissions	9.9 tonnes per year	8.8 tonnes per year
Lighting	£170 per year	£101 per year
Heating	£1,068 per year	£1,556 per year
Hot water	£137 per year	£119 per year

You could save up to £201 per year

The figures in the table above have been provided to enable prospective buyers and tenants to compare the fuel costs and carbon emissions of one home with another. To enable this comparison the figures have been calculated using standardised running conditions (heating periods, room temperatures, etc.) that are the same for all homes, consequently they are unlikely to match an occupier's actual fuel bills and carbon emissions in practice. The figures do not include the impacts of the fuels used for cooking or running appliances, such as TV, fridge etc.; nor do they reflect the costs associated with service, maintenance or safety inspections. Always check the certificate date because fuel prices can change over time and energy saving recommendations will evolve.



SUBJECT TO CONTRACT

VIEWING STRICTLY BY APPOINTMENT