



PORCHESTER PLACE W2

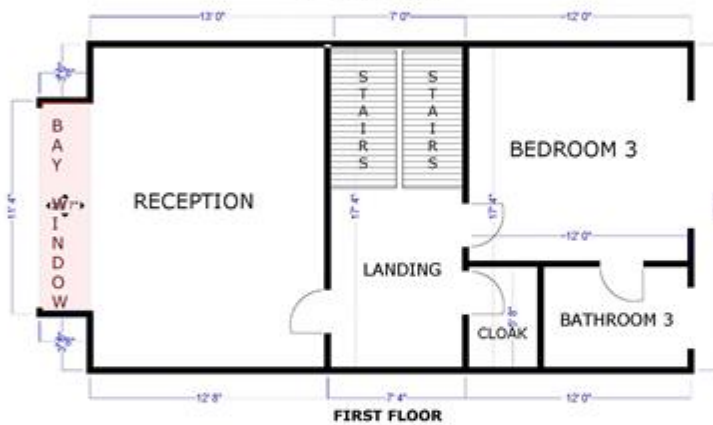
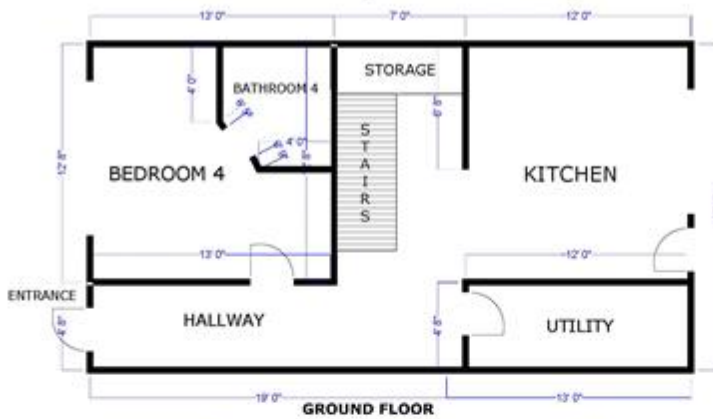
Price
£2,300,000

A wonderful and rare opportunity to purchase this 1970s family townhouse on the Hyde Park Estate. Arranged over three floors the property comprises of four bedrooms, four bathrooms (four en-suite), reception room, kitchen, utility room and cloakroom. The property also has the added benefit of a 91 year lease. Porchester Place is wonderfully located a short walk away from the open spaces of Hyde Park, Marble Arch tube station (central line), Oxford street and Paddington railway station.

Details

Reception room
Kitchen
4 Bedrooms
4 Bathrooms
Utility room
Cloakroom

FLOOR PLAN - APPROX 160 SQUARE METRES OR 1715 SQUARE FEET



IMPERIAL SCALE

DISCLAIMER . FLOOR PLAN MEASUREMENTS ARE APPROXIMATE AND FOR ILLUSTRATIVE PURPOSES ONLY. WHILST WE DO NOT DOUBT THE FLOOR PLANS ACCURACY WE MAKE NO GUARANTEE, WARRANTY OR REPRESENTATION AS TO THEIR ACCURACY OR COMPLETENESS . THEY HAVE BEEN PREPARED IN GOOD FAITH.

Terms and Conditions

Tenure: 91 years
Borough: Westminster
Price: £2,300,000

SUBJECT TO CONTRACT

VIEWING STRICTLY BY APPOINTMENT