



EATON MEWS NORTH, BELGRAVIA SW1

Price
£2,750 per week

Stunning high tech, contemporary 4 bedroom mews house on 4 floors. This beautifully renovated house comprises approximately 2600 sq ft and benefits from a garage as well as parking for 2 cars in the private mews. With wood floors in the reception areas, air conditioning and contemporary features and amenities and excellent storage and stylish design. Superb for entertaining and with flexible accommodation. Eaton Mews North is situated just off Eaton Place close to Sloane Square and Belgrave Square.

Details

- 3-4 bedrooms
- 4 bathrooms/shower rooms
- 3 reception rooms
- study/bedroom 4
- kitchen
- communal garden
- air conditioning
- garage
- wood floors

private parking for 2 cars
Council Tax Band H

PLAZA estates

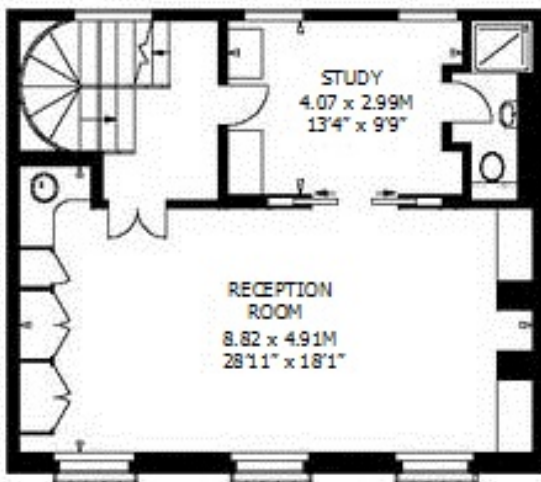
www.plazaestates.co.uk

Knightsbridge Office, 51 Beauchamp Place, London SW3 1NY Tel: 020-7596-6999 Fax: 020-7581-7005





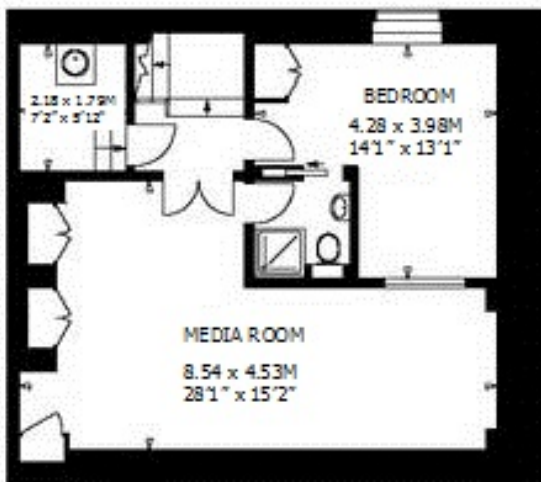
Approximate gross internal area
250 sq m / 2691 sq ft
(including garage)



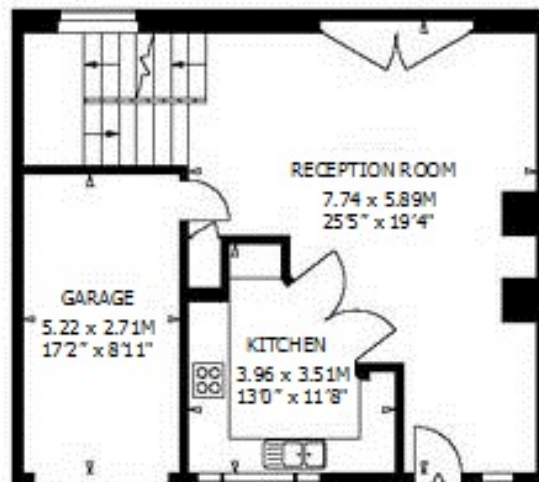
FIRST FLOOR



SECOND FLOOR



LOWER GROUND FLOOR



GROUND FLOOR

Terms and Conditions

Available: Available Now For Long Let
Price: £2,750 per week

EPC Information

Energy Performance Certificate

33, Eaton Mews North, LONDON, SW1X 8AS
 Dwelling type: Mid-Terrace house
 Date of assessment: 06 October 2009
 Date of certificate: 07 October 2009
 Reference number: 9631-2890-6901-0301-2656
 Total floor area: 237 m²

This home's performance is rated in terms of the energy use per square metre of floor area, energy efficiency based on fuel costs and environmental impact based on carbon dioxide (CO₂) emissions.

Energy Efficiency Rating

Band	Current	Potential
A		
B		
C		
D		
E		
F	27	28
G		

130 energy efficient - lower running costs
 Not energy efficient - higher running costs
 EU Directive 2002/91/EC

Environment Impact (CO₂) Rating

Band	Current	Potential
A		
B		
C		
D		
E	41	41
F		
G		

130 environmentally friendly - lower CO₂ emissions
 Not environmentally friendly - higher CO₂ emissions
 EU Directive 2002/91/EC

Estimated energy use, carbon dioxide (CO₂) emissions and fuel costs of this home

	Current	Potential
Energy use	398 kWh/m ² per year	354 kWh/m ² per year
Carbon dioxide emissions	13 tonnes per year	13 tonnes per year
Lighting	£234 per year	£122 per year
Heating	£2514 per year	£2560 per year
Hot water	£283 per year	£293 per year

Based on standardised assumptions about occupancy, heating patterns and geographical location, the above table provides an indication of how much it will cost to provide lighting, heating and hot water to this home. The fuel costs only take into account the cost of fuel and not any associated service, maintenance or safety inspection. This certificate has been provided for comparative purposes only and enables one home to be compared with another. Always check the date the certificate was issued, because fuel prices can increase over time and energy saving recommendations will evolve.

To see how this home can achieve its potential rating please see the recommended measures.

This EPC and recommendations report may be given to the Energy Saving Trust to provide you with information on improving your dwelling's energy performance.

For advice on how to take action and to find out about offers available to help make your home more energy efficient, call 0800 512 012 or visit www.energysavingtrust.org.uk/myhome

SUBJECT TO CONTRACT

VIEWING STRICTLY BY APPOINTMENT