



## PORCHESTER TERRACE, BAYSWATER, W2.

**Price**  
**£1,100 per week**

Attractive and bright four bedroom townhouse arranged over four floor within a secure gated development. The property has wooden flooring, a pretty paved courtyard, private balcony and ample storage, offering a large reception room with wooden floors, separate kitchen and four double bedrooms with two bathrooms, the house would make an ideal family home. The house is conveniently located close to the amenities of Whiteley's shopping centre, Queensway, Paddington and Bayswater Underground Stations and is a short walk from Hyde Park. Garage by separate negotiation.

### Details

- 4 Bedrooms
- 2 Bathrooms
- Cloakroom
- 2 Reception Rooms
- Kitchen
- Patio
- Balcony

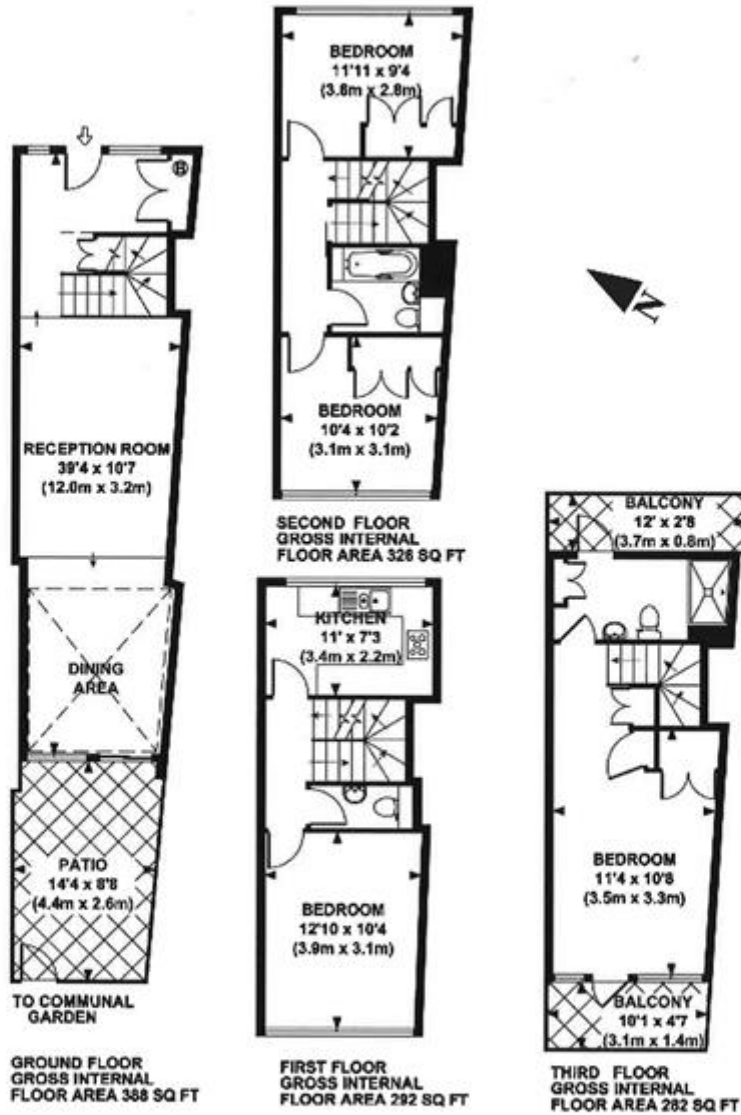


# PLAZA estates

[www.plazaestates.co.uk](http://www.plazaestates.co.uk)

Marble Arch Office, 29-31 Edgware Road, London W2 2JE Tel: 020-7724-3100 Fax: 020-7258-3090





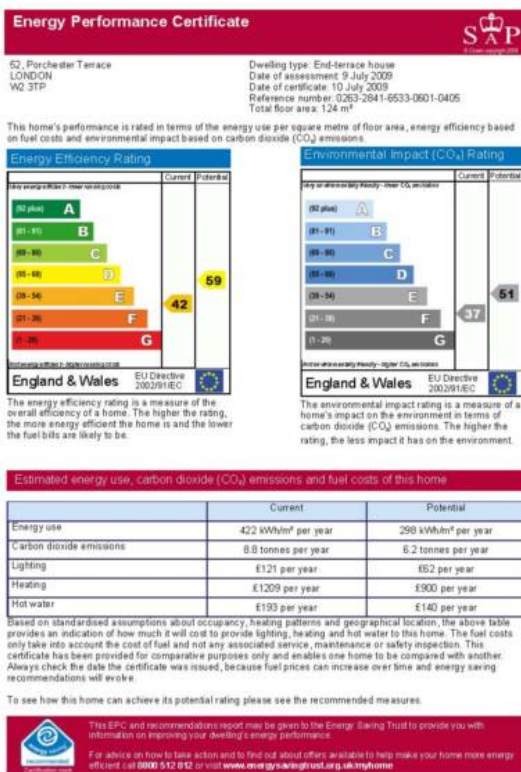
APPROX. GROSS INTERNAL FLOOR AREA 1289 SQ FT / 120 SQ M

This floorplan is for illustration purposes and may not truly reflect design or dimensions and should not be used for valuation or condition purposes.

## Terms and Conditions

Available: Available Now For Long Let  
Price: £1,100 per week

## EPC Information



**SUBJECT TO CONTRACT**

**VIEWING STRICTLY BY APPOINTMENT**