



ST MICHAELS STREET, PADDINGTON W2.

Price
£1,200 per week

A spacious four bedroom house located on a quiet residential street near Paddington station. This modernised and fully furnished four double bed roomed house arranged over three floors with some wooden floors, lovely reception room with space to dine, contemporary kitchen and bathrooms, small patio and underground parking. The house is centrally located just minutes from Paddington Station and within easy walking distance of Marylebone Road and Marble Arch.

Details

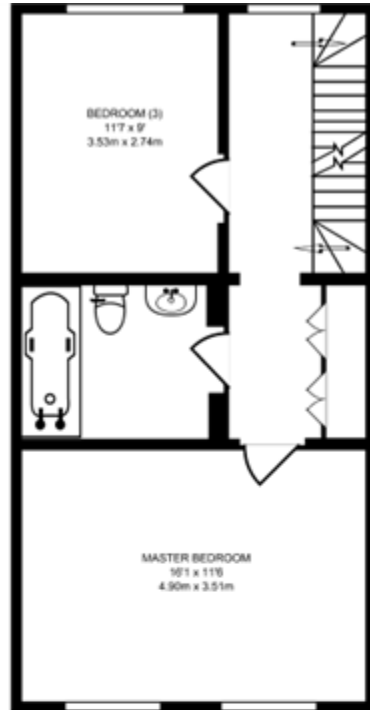
- 4 Bedrooms
- 2 Bathrooms
- Cloakroom
- Reception Room
- Kitchen
- Patio
- Underground Parking



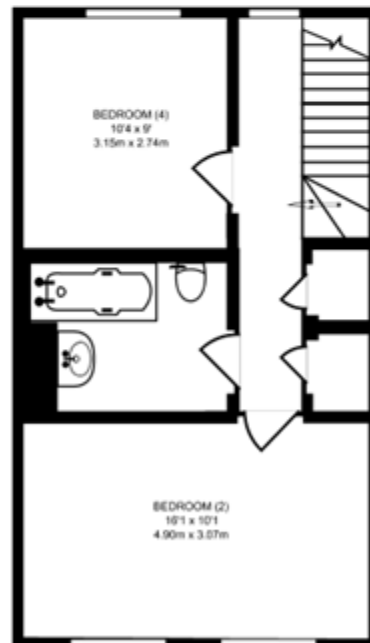




GROUND FLOOR
GROSS INTERNAL FLOOR AREA
538 SQ FT/50.01 SQ M



FIRST FLOOR
GROSS INTERNAL FLOOR AREA
502 SQ FT/46.65 SQ M



SECOND FLOOR
GROSS INTERNAL FLOOR AREA
452 SQ FT/42.05 SQ M

Terms and Conditions

Available: Available Now For Long Let
Price: £1,200 per week

SUBJECT TO CONTRACT

VIEWING STRICTLY BY APPOINTMENT