

3 Bridge Street
Bishop's Stortford
Herts CM23 2JU

LEDNOR
& COMPANY

(01279) 505055
sales@lednor.co.uk
www.lednor.co.uk

Established 1986

Independent Estate Agents and Valuers



60 Winchester Close, Bishop's Stortford, Hertfordshire, CM23 4JQ

£399,950

Deceptively spacious, well maintained and extended four bedroom detached within easy walking distance of primary schools and local shops. The property benefits from replacement Upvc double glazing and refitted Worcester combi boiler.

The accommodation comprises: Large entrance hall, downstairs cloakroom, sitting room, impressive open plan kitchen/dining/family room. On the first floor there are three bedrooms and family bathroom. On the second floor is the main bedroom with en-suite shower room.

The South facing rear garden is approximately 30' x 30' with paved patio, lawn area, personal door to garage and large 40' x 6' gated side pedestrian access with garden shed.

Bishop's Stortford is off junction 8 of the M11 and the property is approximately a 20/25 minute walk to the town centre and mainline railway station which runs a 40 minute service into London Liverpool Street Station via the Stansted Express. EPC Band D

Entrance Porch

7'1" x 4'6" (2.16m x 1.37m)

Upvc door, tiled and laminate flooring, radiator, door to cloakroom and sitting room.

Downstairs Cloakroom

Modern white suite comprising: Wall mounted hand wash basin with mixer tap, close couple wc. Frosted window to front, tiled walls, radiator, laminate flooring.

Sitting Room

17'11" x 11'5" (5.46m x 3.48m)

Windows on two aspects, radiator, laminate flooring. Attractive block windows to staircase.



Hallway

Radiator, stairs to first floor.

Kitchen/Dining/Family Room

18'9" x 16'9" (5.72m x 5.11m)

Open plan kitchen comprising: Cupboard and drawer base units with worktop above. Inset one and a half bowl stainless steel sink unit with mixer tap. Integrated Whirlpool self cleaning electric oven with large five ring gas hob and stainless steel chimney extractor hood above. Plumbing and space for dishwasher, washing machine, fridge/freezer and tumble dryer. Range of eye level wall units. Large understairs storage cupboard, side doorway leads to driveway.



Dining/Family Area: Large impressive room with Velux skylights, double French doors to rear garden and windows on two aspects. Inset ceiling lights, television point.



First Floor Landing

Inset ceiling lights, window to side, radiator.

Bedroom Two

11'2" x 9'7" (3.40m x 2.92m)

Single built in wardrobe cupboard, two single storage cupboards. Window to front, radiator, laminate flooring.



Bedroom Three

8' x 8' (2.44m x 2.44m)

Window to front, radiator, television point.



Bedroom Four/Dressing Room

9'5" x 6'1" (2.87m x 1.85m)

One double and two single fitted wardrobe cupboards, dual windows to the rear, inset ceiling lights, window to rear.

Family Bathroom

White suite comprising: Panel bath with mixer tap and shower attachment. Pedestal wash basin, close couple wc. Frosted window to rear, radiator.

Bedroom One

15'2" x 10'8" (4.62m x 3.25m)

Three Velux windows, one window to side. Radiator, inset ceiling lights, eaves storage.



En-suite Shower Room

Enclosed tiled shower cubicle with deluge shower head. Hand wash basin set in vanity unit, close couple wc. Velux window, inset ceiling lights, extractor fan.

Rear Garden

approx 30' x 30' (approx 9.14m x 9.14m)

South facing rear garden with paved patio immediately to the rear, outside tap and power point. Dwarf retaining wall for raised lawn area with shrub borders to sides. Large 40' x 6' gated side pedestrian access with garden shed. Personal door to garage.



Single Garage

Up and over door, boarded loft, wall mounted Worcester combi boiler.

Front

Block paved driveway provides parking for up to four cars. Shrub borders to the side.

Disclaimer

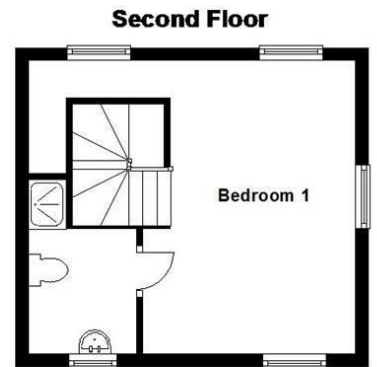
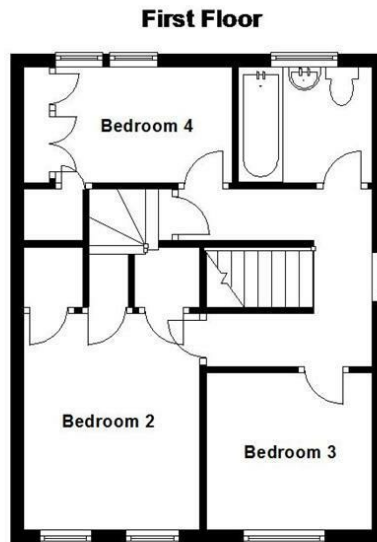
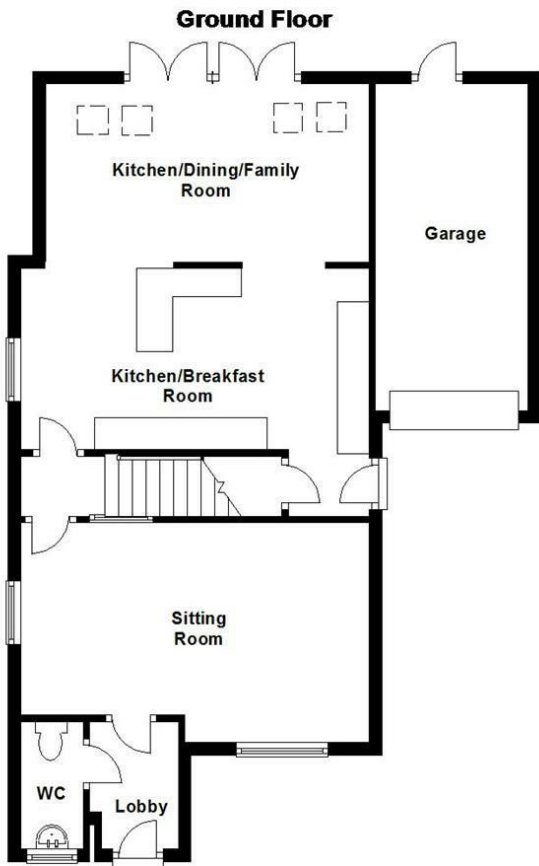
For clarification, we wish to inform prospective purchasers that we have prepared these sales particulars as a general guide. We have not carried out survey, not tested the services, appliances or specific fittings and any mention of such items does not imply that they are in working order. Room sizes are approximate and should not be relied upon for carpets and furnishings. Photographs are for illustration only and may depict items which are not for sale or included in the sale of the property. Any stated plot size is intended merely as a guide and has not been officially measured or verified. We have not checked the legal documents to verify the freehold/leasehold status of the property and purchaser is advised to obtain clarification from their solicitor or surveyor. MONEY LAUNDERING REGULATIONS 2003. Intending purchaser will be asked to produce identification documents and we would ask for your co-operation in order that there be no delay in agreeing the sale.

FINANCIAL SERVICES

Through our mortgage broker Mark Jackson of M.D.Jackson Financial Services, we are able to offer independent mortgage advice with no obligation. Mark is also independent for all protection needs allowing him to review your life assurance and critical illness policies so that he can ensure that you have the most suitable cover. He can be contacted on 01799 542699. Please feel free to call him for any advice or quotations required. Your home is at risk if you do not keep up payments on a mortgage or loan secured against it. M.D.Jackson Financial Services are directly authorised by the Financial Conduct Authority no. 300773

RELOCATION AGENT NETWORK

WHY YOU SHOULD CHOOSE A RELOCATION AGENT NETWORK MEMBER * Independently selected as the best local agents. * Now affiliated to over 600 offices across the UK. * Local reputation, experience and commitment. * Independent owner managed business. * More out of town buyers through links with Cartus who are the premier provider of global relocation services. * Access to the largest property website of its kind in the UK - www.relocation-agent-network.co.uk. * Not owned by a financial institution. * Regularly 'mystery shopped' to ensure high standards. * Committed to meeting your needs this year, next year and for many more to come.



APPROX GROSS INTERNAL FLOOR AREA 1325 SQFT
This floor plan is intended as a GUIDE TO LAYOUT and is NOT TO SCALE