



Avondale Road, South Croydon, CR2 7JA.

A substantial 4/5 BEDROOM semi-detached family home in a sought after area, close to the Whitgift School & South Croydon Station. Wide entrance hall, shower/WC, 2 large family receptions, sunny conservatory, kitchen, bathroom/WC, large loft with potential to convert, 200' + rear garden, garage & driveway - MUST BE VIEWED!

£565,000

- 4/5 Bedrooms
- 2 bathrooms
- 2/3 reception rooms
- Garage & Driveway
- Large Gardens



Property Description

A rare opportunity to acquire a substantial 4/5 bedroom semi-detached family home, enjoying an elevated position, close to the popular Whitgift School and just half a mile from South Croydon Station.

The property is approached by a large front garden and affords a wide hallway, two separate reception rooms, a delightfully sunny conservatory, downstairs cloakroom/shower room, fitted kitchen, landing, four double bedrooms - the largest of which has been divided to provide 2 children's bedrooms - and a family bathroom/WC. There is also a large loft which provides tremendous potential for conversion, as per the house next door.

Parking is provided by a garage to the front with remote

control doors with additional parking on the driveway.

At the rear there is a lovely 200'+ South/West facing landscaped garden.

This property simply must be viewed!

Accommodation:

Front Garden

Entrance Hall

Shower Room/WC

Reception 1

Reception 2

Family Kitchen

Conservatory

First Floor

Bedroom 1

Bedroom 2

Bedroom 3

Bedroom 4

Bedroom 5 (Sectioned off from Bedroom 2)

Bathroom

Rear Garden

Tenure

Freehold



Agents Note: Whilst every care has been taken to prepare these sales particulars, they are for guidance purposes only. All measurements are approximate are for general guidance purposes only and whilst every care has been taken to ensure their accuracy, they should not be relied upon and potential buyers are advised to recheck the measurements

Tenure

Freehold

Council Tax Band

E

Viewing Arrangements

Strictly by appointment

Contact Details

145 Brighton Road

South Croydon

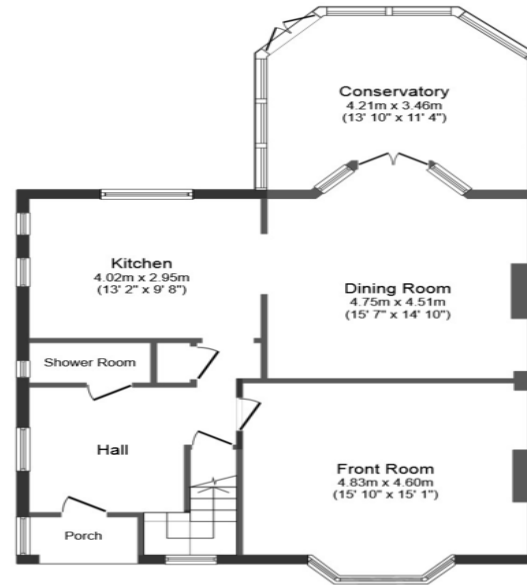
Surrey

CR2 6EF

www.martinco.com

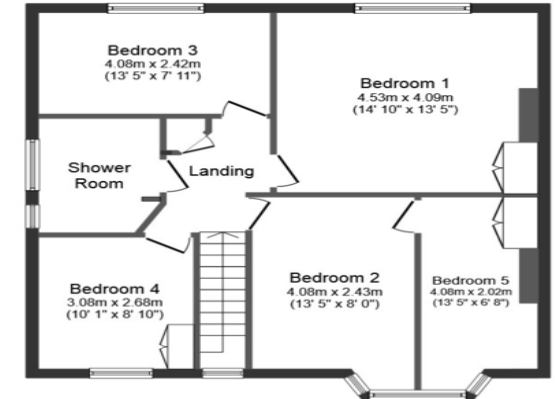
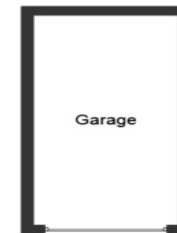
croydon@martinco.com

0208 688 8565



Ground Floor

Floor area 105.0 sq. m. (1,130 sq. ft.) approx



First Floor

Floor area 74.0 sq. m. (797 sq. ft.) approx

Total floor area 179.0 sq. m. (1,927 sq. ft.) approx

This plan is for illustration purposes only and may not be representative of the property. Produced by KeyAGENT