





Guide Price £1,450,000-£1,550,000

Ringwood is a substantial NEW BUILD luxury family home of approximately 6,088 sq ft (inc garage) built by a well regarded local developer to exacting standards and a high specification.

Offering superb, modern family living the property features an impressive kitchen/breakfast/dining room with bi-folding doors to the west facing terrace and garden. The luxury kitchen is presented with an exceptional range of Bosch and Miele appliances and the bathrooms are fitted with Villeroy and Bosch sanitary ware and Travertine or porcelain tiling.

There are three further reception rooms, a separate utility room, cloakroom and a double garage.

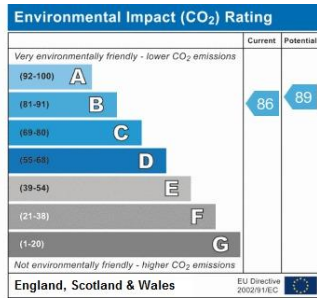
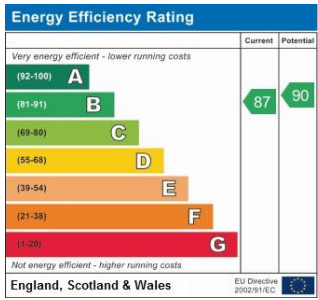
The first floor provides four bedroom suites with the master suite including a dressing room plus his and hers en suites.

To the second floor there is a fifth bedroom, bathroom and adaptable games room/cinema room and large store room.

The exterior is almost entirely maintenance free and outstanding energy efficiency is provided by thermal insulation which exceeds the requirements of Building Regulations.

The ground and first floors have solid masonry screeds with under floor heating. Cabling for CCTV and for full audio visual systems centred around a Sonos multi room system has been installed. There are TV points to all principal rooms and cabling for the second floor cinema (no hardware included). An alarm system has been installed.





Please refer to

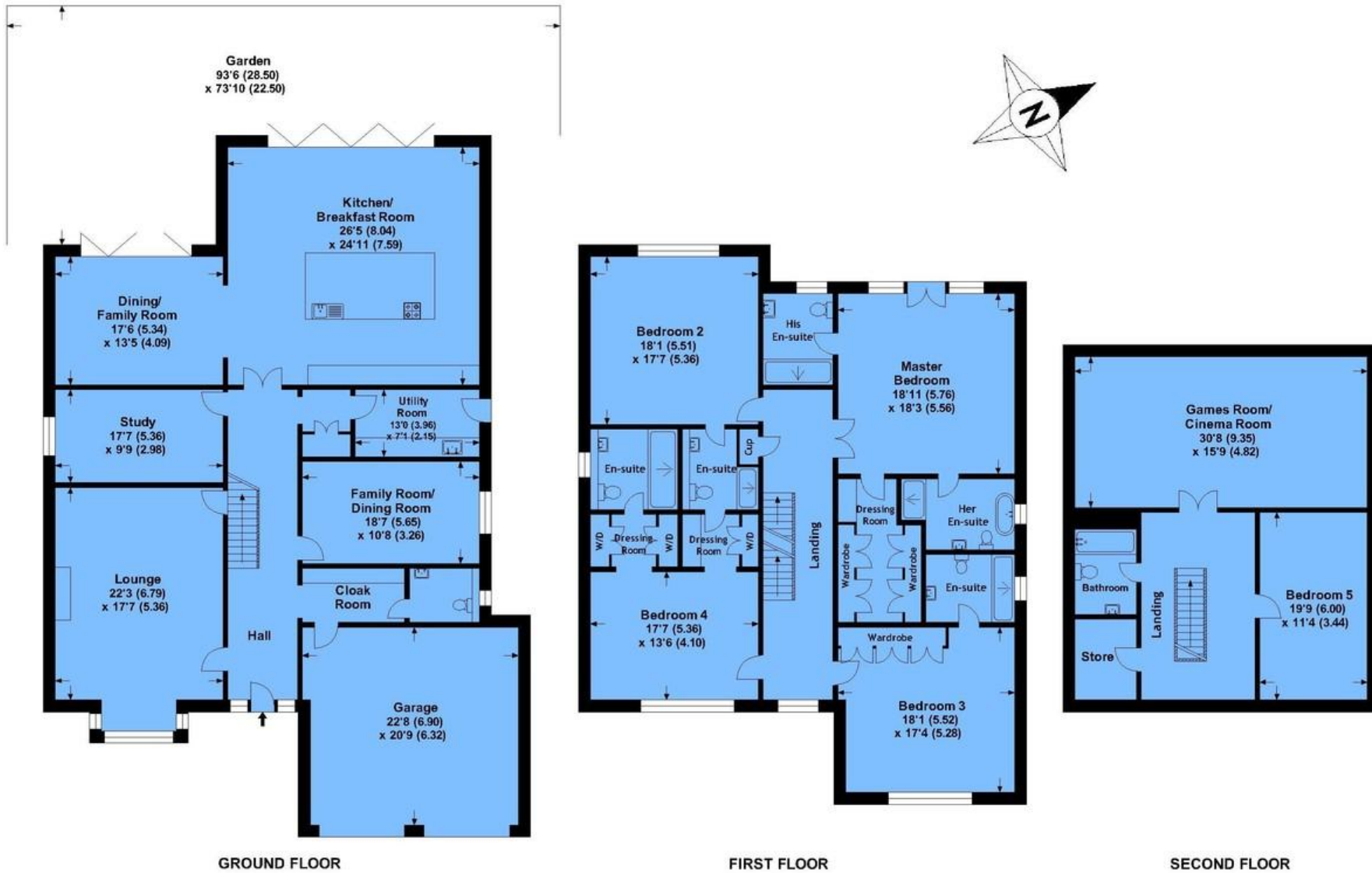
www.jdmestateagents.com

to view our full area guides



Ringwood

APPROX. GROSS INTERNAL FLOOR AREA 6088.28 SQ FT / 565.62 SQ M. INC GARAGE.



This is for guidance only, not to scale and must not be relied upon as a statement of fact.
Attention is drawn to the notice on these particulars.

