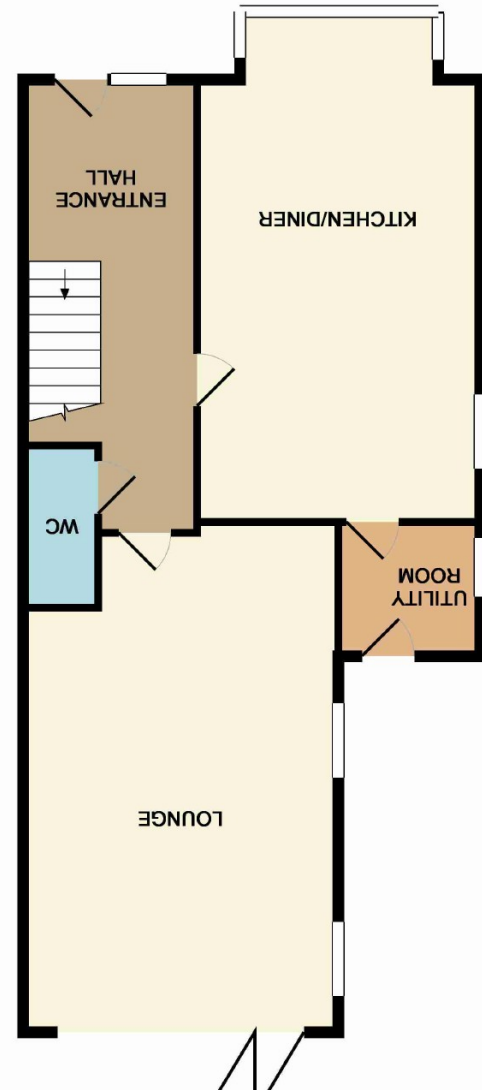


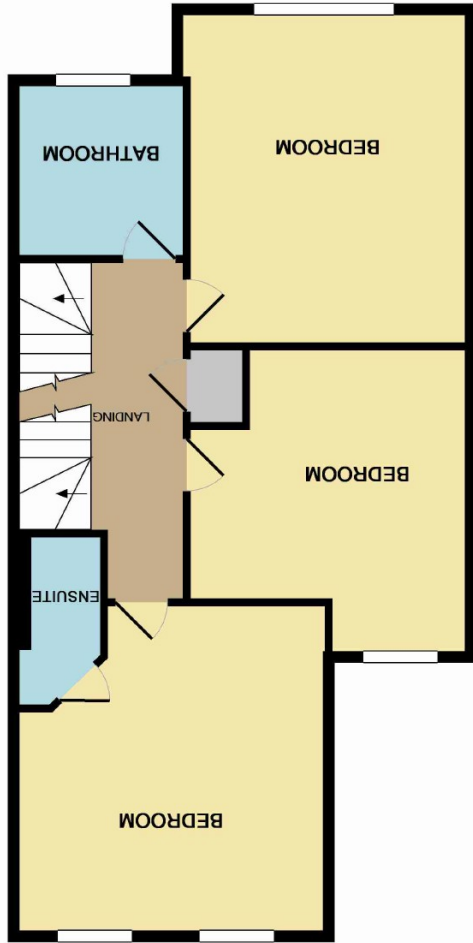
jdm must advise that although every effort has been made to ensure the accuracy of these details they form no part of any contract and are issued without any responsibility on the part of the agents or vendor. Photographs may have been taken using a wide angle lens. Any floor plans shown are not to scale. All measurements, walls, doors, windows, fittings and appliances, their sizes and locations are shown conventionally and are approximate only. Any reference to alterations or particular use of the property wherever stated, is not a statement that planning, building regulations or other relevant consent has been obtained. We have not carried out a survey of the property nor have we tested any services, systems or appliances at this property. We strongly recommend that all the information we provide is verified by your surveyor and solicitor or legal adviser. jdm recommends Independent Mortgage Advice. For help with your mortgage please contact your local branch. Your home may be repossessed if you do not keep up repayments on your mortgage. Written quotations available on request.

Whilst every attempt has been made to ensure the accuracy of the floor plan contained here, measurements of doors, windows and other items are approximate and no responsibility is taken for any error, omission, or mis-statement. This plan is for illustrative purposes only and should be used as such by any prospective purchaser. The services, systems and appliances shown have not been tested and no guarantee as to their operability or efficiency can be given. Made with Metropix ©2015

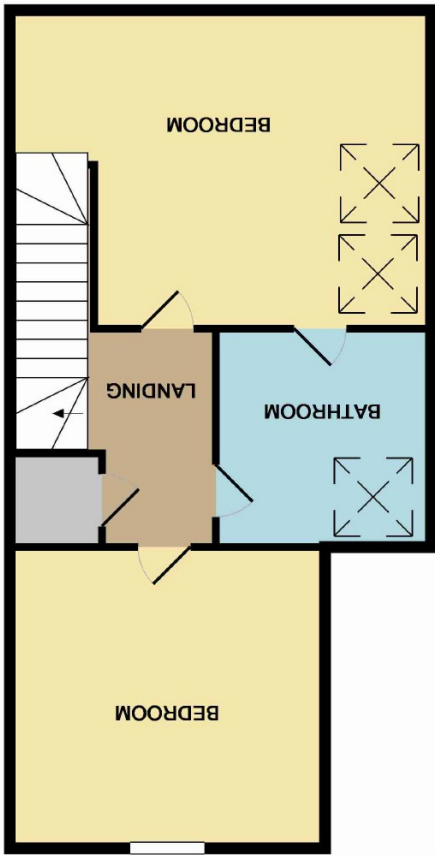
GROUND FLOOR
APPROX. FLOOR
AREA 700 SQ.FT.
(65.0 SQ.M.)



1ST FLOOR
APPROX. FLOOR
AREA 655 SQ.FT.
(60.9 SQ.M.)



2ND FLOOR
APPROX. FLOOR
AREA 568 SQ.FT.
(52.7 SQ.M.)



Description:

Situated about a 5 minute walk to Petts Wood station, shops, restaurants and more this location is outstandingly convenient with direct trains to London Bridge from 24 mins, London Cannon Street from 31 mins and London Victoria from 34 mins.

Two substantial new build semi-detached houses of approx. 1922 sq ft with an excellent specification and offering five bedrooms, three bathrooms, kitchen/dining room, living room and parking for two cars with a good size garden. A convenient location for the whole family with local schools including Crofton Infant and Junior School 0.2 miles away and St James' Roman Catholic School 0.4 miles away; Petts Wood High Street and Station Square with its array of shops, and restaurants, and Petts Wood station just a few minutes away.

Features include traditional build quality; under floor heating to ground floor; kitchens by Symphony with composite stone work surfaces; integrated kitchen appliances including fridge/freezer, dishwasher, microwave, 5 burner induction hob and extractor hood with glass canopy; fitted utility room with Symphony units, washing machine, tumble dryer, stainless steel sink and chrome mixer taps; bathrooms with Porcelonasa bathroom suites and Porcelonasa floor and wall tiles, heated chrome towel rails; oak veneered laddered style internal doors; polished chrome switch and socket plates to ground floor; polished chrome ironmongery; gas under floor heating to ground floor; pressurised hot water cylinder; security alarm; exterior lighting; satellite, TV aerial and FM point to all main rooms; landscaped front garden with rear garden laid to lawn plus patio; Tegular block paving to front; Indian stone patios and paths; exterior tap and 10 year NHBC warranty.

Directions: From Petts Wood station exit onto Queensway, proceed left towards the mini roundabout and these houses will be found on the left at the corner of Queensway and Tudor Way.

Tenure: Freehold

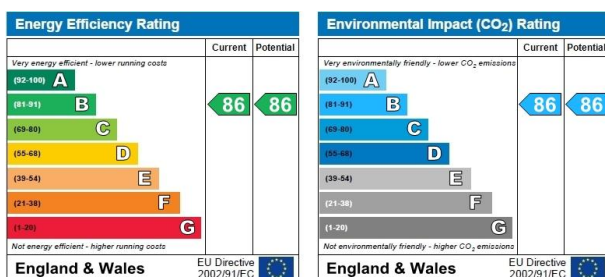
Council Tax Band: TBC

Local Authority: London Borough of Bromley

Room Dimensions:

Hall	
Kitchen/diner	18'6 x 11'11 plus bay
Utility room	5'11 x 5'8
Guest cloakroom	
Lounge	21'5 x 13'4
Stairs to first floor	
Bedroom two	14'4 x 12'0
Bedroom three	13'0 x 12'0
Bedroom four	14'0 x 13'4
Ensuite	
Family bathroom	
Stairs to second floor	
Master bedroom	17'8 x 13'4
Ensuite	
Bedroom five	13'4 x 12'8
Storage	
Garden	

Please refer to www.jdmestateagents.com to see our full Area Guides.



Please contact the branch for a complete copy of the EPC document