





Guide Price £1,100,000 - £1,200,000

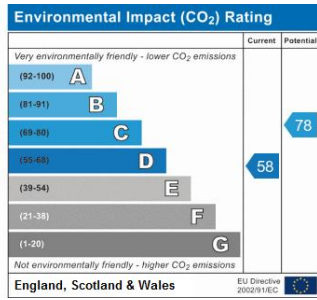
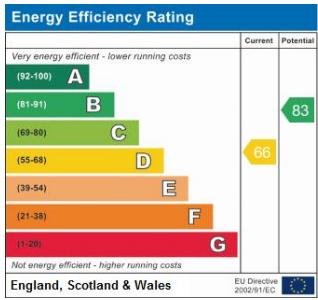
An outstanding 5 bedroom semi-detached Edwardian house having recently undergone a complete programme of refurbishment retaining period features such as coving and a feature fireplace. The property is offered End of Chain.

This stunning property has been extended to the ground floor and is well proportioned throughout benefitting from spacious rooms, high ceilings and a large welcoming entrance hallway. The bespoke kitchen with central island is at the hub of the house and is fitted with a full range of wall and base units including an integrated dishwasher, range style cooker and freestanding American style fridge/freezer (optional). The open plan kitchen/breakfast room leads to an additional reception area that provides an outstanding entertaining/family space. A utility room and separate living room, cloakroom and cellar completes the downstairs accommodation.

Upstairs there are 5 good sized bedrooms, a large family bathroom with period style freestanding bath, walk in shower, wc and washbasin. The master bedroom also benefits from its own en-suite shower room.

To the rear is a beautiful 89' x 34'10 landscaped garden consisting of a Sandstone terrace with steps to a level lawn with attractive flower beds and a shed for storage. The front of the property is paved and provides off street parking.





Please refer to

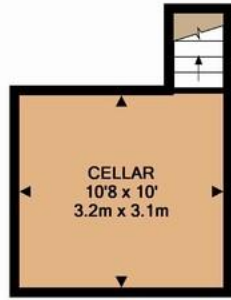
---

[www.jdmestateagents.com](http://www.jdmestateagents.com)

---

to view our full area guides

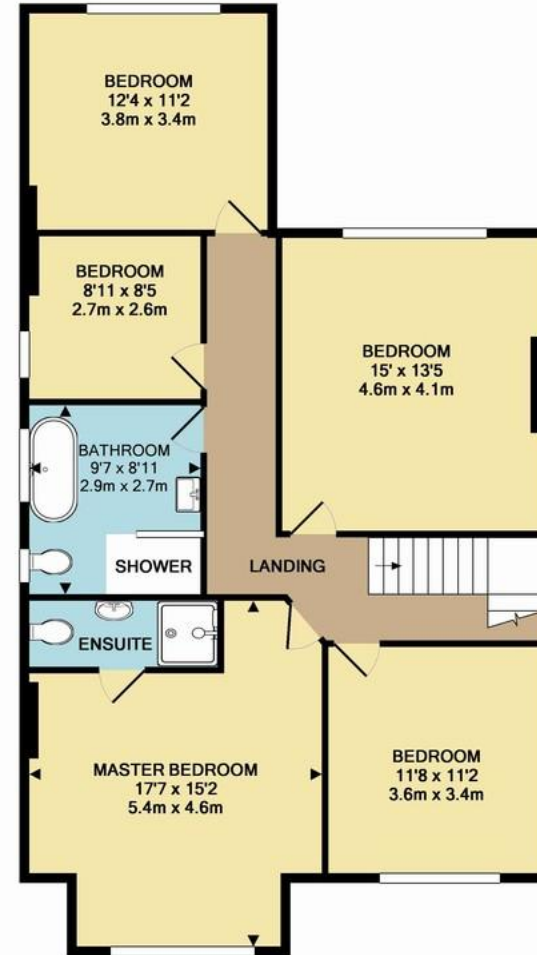




BASEMENT LEVEL  
APPROX. FLOOR AREA  
119 SQ.FT.  
(11.0 SQ.M.)



GROUND FLOOR  
APPROX. FLOOR AREA  
1185 SQ.FT.  
(110.0 SQ.M.)



1ST FLOOR  
APPROX. FLOOR AREA  
1003 SQ.FT.  
(93.1 SQ.M.)

TOTAL APPROX. FLOOR AREA 2306 SQ.FT. (214.2 SQ.M.)

Whilst every attempt has been made to ensure the accuracy of the floor plan contained here, measurements of doors, windows, rooms and any other items are approximate and no responsibility is taken for any error, omission, or mis-statement. This plan is for illustrative purposes only and should be used as such by any prospective purchaser. The services, systems and appliances shown have not been tested and no guarantee as to their operability or efficiency can be given.

