



Shoreham-By-Sea, West Sussex BN43 5YG

£650,000



Shore House 1-2 Middle Street, Shoreham-by-Sea, West Sussex, BN43 5DP

t: 01273 830555

f: 01273 830550

e: office@shoreestates.co.uk

w: shoreestates.co.uk

**shore
estates**



This beautiful detached home briefly comprises of a welcoming entrance hall, two downstairs bedrooms, laundry cupboard plus a downstairs newly refitted luxury shower room

Moving to the first floor landing you are greeted with a stunning open plan lounge dinner, which opens into an impressive modern fitted Kitchen. You are truly hit with a wow factor as these two rooms ooze light and space with outstanding views over the reserve and River Adur, also including a balcony view, and side access to the side garden.

Ascending to the second floor where you can find three good sized bedrooms and a further luxury bathroom.
The outside accommodation includes front and side gardens, driveway and built in storage.

The property is situated on Shoreham Beach close to the town centre being a stones through away from Shoreham's foot bridge, which is located conveniently close to Shoreham's mainline train station which offers excellent transport networks to London & Brighton making this property ideal for those that need to commute.

Welcoming Entrance Hall

Bedroom Four 15'3" x 9'10"
(4.65m x 3.02m)

Bedroom Five 8'0" x 8'9" (2.46m x
2.69m)

Brand New Shower Room

First Floor

**Triple Aspect West Facing
Lounge 30'2" x 15'1"** (9.22m x
4.62m)

Modern Fitted Kitchen 15'3" x 8'9"
(4.65m x 2.69m)

Second Floor

Bedroom One 13'1" x 8'9" (4.01m
x 2.67m)

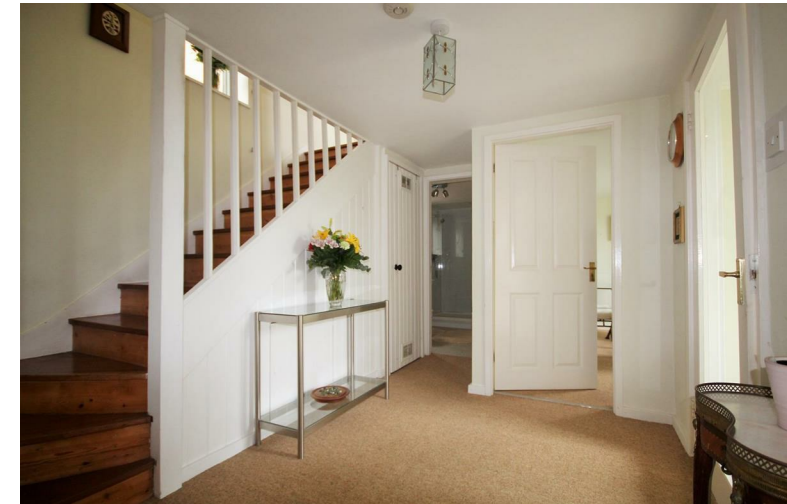
Bedroom Two (8'9" x 11'1" ((2.69m
x 3.38m)

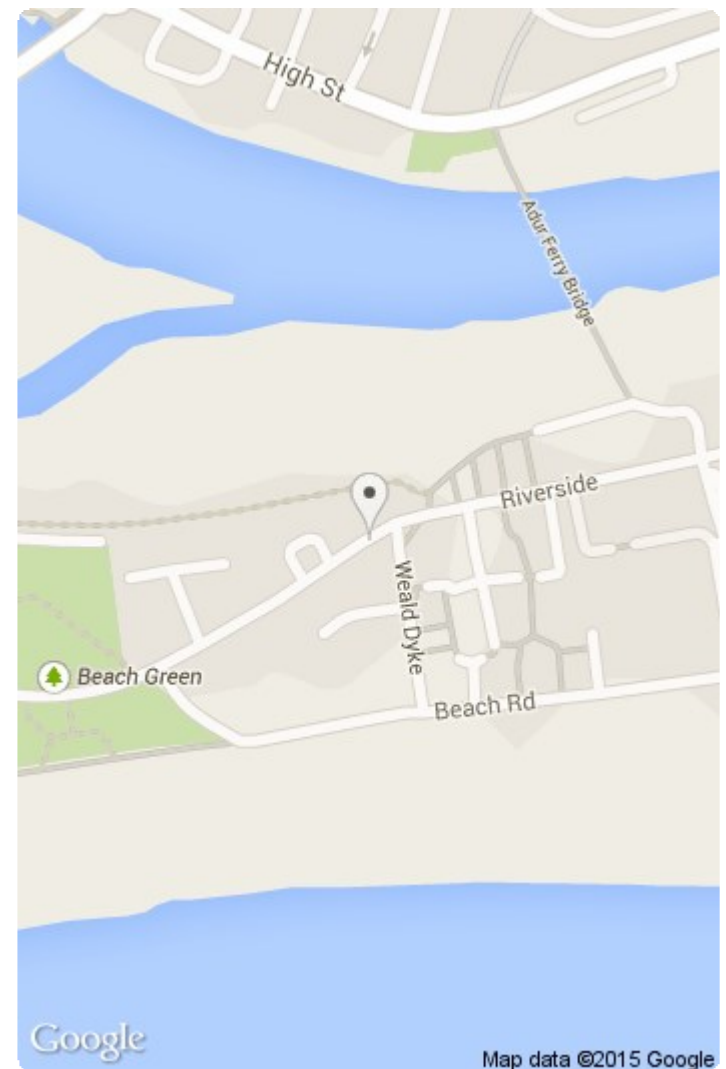
Bedroom Three 11'8" x 8'11"
(3.58m x 2.72m)

Luxury Bathroom

Front Garden & Off Road Parking

Side & Rear Garden





sales • lettings • finance

