



**Shoreham -By-Sea, West Sussex BN43 5RY**  
**£359,950**





# Benbow Close

Shoreham -By-Sea, West Sussex

This fantastic five bedroom town house is situated on the much sought after Shoreham Beach, just a stones throw away from the newly refurbished Adur ferry footbridge into Shoreham town centre.

As you approach the property you will find off street parking to the front of the property for two vehicles. The front door leads you to an open hallway, here you will find two double bedrooms, a separate WC, a fitted shower room and a secondary kitchen. The current setups offers great potential as a 'granny annex'. Leading off the kitchen is your access to your rear garden . The garden has been paved with an additional decorative decked area to the side.

As you go up the stairs, to the left is the lounge, there is a huge sense of space due to the large glass balcony doors to the front of the house with enjoys a westerly aspect. In the corner of the room is a small study area, which would make an ideal home office.

You head through an open arch way to the rear of the room, here you will find a modern fitted kitchen with integrated appliances.

Stairs from the lounge lead you to the second floor. Here you will find three double bedrooms and a fitted family bathroom.

Shoreham-by-Sea is located just a few miles west of Brighton city. Offering fantastic transport links into London and the surrounding areas, making this property suitable for those who commute. Shoreham-by-Sea itself has an excellent range of local shops, cafes and bars which would suit most peoples taste.

For more details or to arrange a viewing, please don't hesitate to contact the office on 01273 830555.

- Mid-Terraced House
- Five Bedrooms
- Off Street Parking
- Shoreham Beach Location
- Fitted Kitchen
- 29' Rear Garden





**Ground Floor Bedroom One**

8'9" \* 16'10" into built in wardrobe (2.67 \* 5.15 into built in wardrobe)

**Ground Floor Bedroom Two**

7'0" \* 10'2" (2.14 \* 3.11)

**Ground Floor Kitchen**

5'1" \* 6'4" (1.57 \* 1.94)

**Garden**

29'6" \* 16'9" (9.00 \* 5.12)

**Front Room**

19'5" \* 12'5" (5.93 \* 3.79)

**Kitchen/Diner**

15'7" \* 7'10" (4.77 \* 2.40)

**Second Floor Bedroom One**

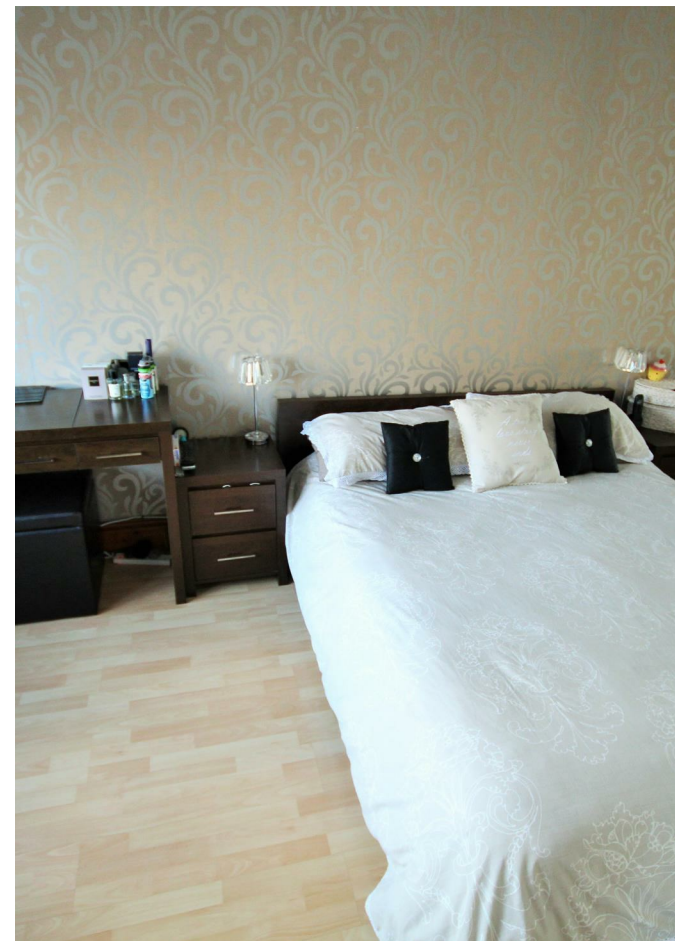
16'1" into cupboard x 13'5" (4.91 into cupboard x 4.09)

**Second Floor Bedroom Three**

10'4" max \* 6'1" max (3.17 max \* 1.87 max)

**Off Street Parking**

For 2 vehicles.



Shore House 1-2 Middle Street, Shoreham-by-Sea, West Sussex, BN43 5DP

t: 01273 830555

f: 01273 830550

e: [office@shoreestates.co.uk](mailto:office@shoreestates.co.uk)

w: [shoreestates.co.uk](http://shoreestates.co.uk)

---



*sales • lettings • finance*