



Sandra Davidson are pleased to offer an opportunity to acquire a spectacular largely extended family home on a substantial plot situated in the popular Stanford-Le-Hope. This immaculately presented detached property boasts eight bedrooms with seven en-suites, seven receptions, a large rear conservator, gym room, indoor heated swimming pool, fitted kitchen and a utility room. The property also benefits from a large detached garage, off street parking for multiple cars on a large gated drive, attractive views to front and rear, large rear and front gardens..

This prestigious property can only be appreciated by internal inspection and comprises:-





### ENTRANCE

Via large wooden framed double doors with fully glazed sidelights, into fully enclosed storm porch, wooden flooring, feature glazed centre pivot roof-light window, spotlights inset to ceiling, video intercom system into entrance hall with, fitted carpet, ornate coving, ornate ceiling rose with feature chandelier, dado rail, carpeted stairs to first floor, doors to:-

### GROUND FLOOR W.C

Opaque double glazed window to rear, radiator, low level wc, hand wash basin, tiled walls, fitted carpet.

### SITTING ROOM 6.92m x 4.02m (22'8" x 13'2")

Double glazed window to front, two feature ornate ceiling roses with inset feature chandeliers, ornate coving, feature wall mounted lights, dado rail, wooden skirting, fitted carpet, radiator. Door to office.

### LOUNGE 6.92m x 3.80m (22'8" x 12'6")

Double glazed sliding doors leading into conservatory, further double glazed sliding doors leading into indoor pool area, two feature ornate ceiling roses with inset feature chandeliers, ornate coving, wall mounted lights, dado rail, wooden skirting, fitted carpet, radiators. Door to inner lobby.

### DINING ROOM 4.08m x 3.48m (13'5" x 11'5")

Double glazed window to front, ornate coving, ornate ceiling rose with inset chandelier, feature wall mounted lights, hand wash basin with tiled splash back, wooden skirting, fitted carpet, radiator.

### KITCHEN 3.95m max x 2.62m max (13'0" max x 8'7" max)

Fitted wall and base units, work surface with tiled up-stand, one and a half bowl single drainer stainless steel sink unit with mixer tap, water filter tap, 5 ring gas hob with extractor hood, integrated oven and grill, integral dishwasher, textured vinyl flooring, double glazed window to flank, fully glazed doors to conservatory, door to utility room;-

### UTILITY ROOM 3.80m x 1.83m (12'6" x 6'0")

Double glazed window to flank, work surface, plumbing for washing machine, space for dryer, light, door to rear garden.

### P-SHAPED CONSERVATORY 8.16m max into bay x 6.51m max (26'9" max into bay x 21'4" max)

Fully double glazed with sloping glass roof, feature chandeliers, feature wall mounted lights, tiled floor with under floor heating, bespoke bench seating, hand wash basin inset to vanity unit, double glazed patio doors to rear leading into garden area, double glazed sliding doors leading into indoor swimming pool.

### INNER LOBBY

Tiled flooring, radiator, door to indoor pool area, door to:-

### SHOWER/CHANGING ROOM 3.79m x 2.14m (12'5" x 7'0")

Elongated walk-in shower cubicle with Internal light, pedestal hand wash basin, low level wc with douche, feature chrome plated heated towel rail, fully tiled walls, tiled flooring with under floor heating, wall mounted mirrored vanity unit, contemporary wall mounted hand dryer.

### STUDY 3.34m x 2.82m (10'11" x 9'3")

Double glazed window to flank, fitted carpet, radiator, door to:-

### OFFICE 4.08m x 3.34m (13'5" x 10'11")

Double glazed window to front, ornate ceiling rose with inset light, fitted desk and cupboard with shelving and inset lights, fitted carpet.

### INDOOR SWIMMING POOL 12.71m max into bay x 6.06m (41'8" max into bay x 19'11")

Fully tiled walls and floor, two double glazed windows to rear, double glazed patio doors to garden, double glazed sliding doors to conservatory, double glazed sliding doors to gym area, swimming pool with diving board, door to storage cupboard housing filters, pumps and boiler

### GYM ROOM

Wall mounted mirror, storage cupboard

### FIRST FLOOR LANDING

Double glazed window to rear, fitted carpet, carpeted stairs to second floor, fitted storage, radiator, doors to:-

### MASTER BEDROOM 7.56m x 4.00m max into Cpbld (24'10" x 13'1" max into Cpbld)

Double glazed window to front, further double glazed window to flank, two feature chandeliers, fitted wardrobes with built in spotlights, fitted carpet, radiator, door to en-suite.

### MASTER EN-SUITE 3.05m x 3.05m (10'0" x 10'0")

Opaque double glazed window to rear, five piece coloured suite comprising low level wc, pedestal wash hand basin, bidet, corner jacuzzi bathtub, fully enclosed shower cubicle with steam and sauna, spotlights inset to ceiling, towel rail, fitted carpet, tiled walls, radiator.

### BEDROOM TWO 6.70m max into Cpbld x 3.30m (22'0" max into Cpbld x 10'10")

Two double glazed windows to front with radiators under, spotlights inset to ceiling, fitted wardrobes with built in spotlights, fitted carpet, ceiling rose with inset light, wall mounted air conditioning unit, door to en-suite;-

### EN-SUITE

Fully enclosed shower cubicle, hand wash basin inset to vanity unit with tiled splash-back, wall mounted mirrored vanity unit with inset light, fitted carpet.

### BEDROOM THREE 3.24m max into Cpbld x 2.70m (10'8" max into Cpbld x 8'10")

Double glazed window to rear with radiator under, fitted cupboards, fitted carpet, door to en-suite;-

### EN-SUITE

Fully enclosed shower cubicle, hand wash basin, low level wc, tiled walls and flooring, chrome plated heated towel rail, opaque double glazed window to rear.

### BEDROOM FOUR 4.32m max into Cpbld x 3.24m (14'2" max into Cpbld x 10'8")

Double glazed window to rear with radiator under, feature light, fitted cupboards, fitted carpet, further double glazed window to flank, door to en-suite;-

### EN-SUITE

Fully enclosed shower cubicle, hand wash basin, low level wc, tiled walls, radiator

### BEDROOM FIVE 3.34m x 1.89m (10'11" x 6'2")

Double glazed window to flank with radiator under, fitted carpet, feature chandelier

### BEDROOM SIX 3.91m x 3.34m (12'10" x 10'11")

Double glazed window to front with radiator under, further double glazed window to flank, ceiling rose with feature light, fitted wardrobes with built in spotlights, fitted carpet, door to en-suite.

### EN-SUITE

Fully enclosed shower cubicle, hand wash basin, low level wc, tiled walls, radiator.

### FAMILY BATHROOM 2.31m x 2.22m (7'7" x 7'3")

Double glazed window to rear, hand wash basin, wall mounted mirror, low level wc with concealed cistern and douche, P shaped bathtub with shower attachment and shower screen, tiled floor with under floor heating, feature chrome plated heated towel rail.

### SECOND FLOOR LANDING

Fitted carpet, double glazed window to rear, light, doors to:-

### BEDROOM SEVEN 5.50m max x 4.73m max (18'1" max x 15'6" max)

Double glazed window to rear with radiator under, velux skylight to front, fitted carpet, spotlights inset to ceiling, pushbutton soft touch light switch, access to eaves storage, door to en suite;-

### EN-SUITE 2.98m x 2.75m (9'9" x 9'0")

Walk-in tiled shower cubicle with rain fall effect shower, hand wash basin inset to vanity unit, low level wc, tiled walls and floor, opaque double glazed window to front, chrome plated heated towel rail.

### BEDROOM EIGHT 6.13m x 4.85m (20'1" x 15'11")

Double glazed window to rear with radiator under, velux skylight to front, fitted carpet, spotlights inset to ceiling, pushbutton soft touch light switch, access to eaves storage, door to en suite;-

### EN-SUITE 2.95m x 2.75m (9'8" x 9'0")

Walk-in tiled shower cubicle with rain fall effect shower, hand wash basin inset to vanity unit, low level wc, tiled walls and floor, opaque double glazed window to front, chrome plated heated towel rail.

### SUN ROOM 5.28m x 2.65m (17'4" x 8'8")

Bi-folding double glazed door to rear leading on to balcony, wood flooring, spotlights inset to ceiling, pushbutton soft touch light switch, radiator.

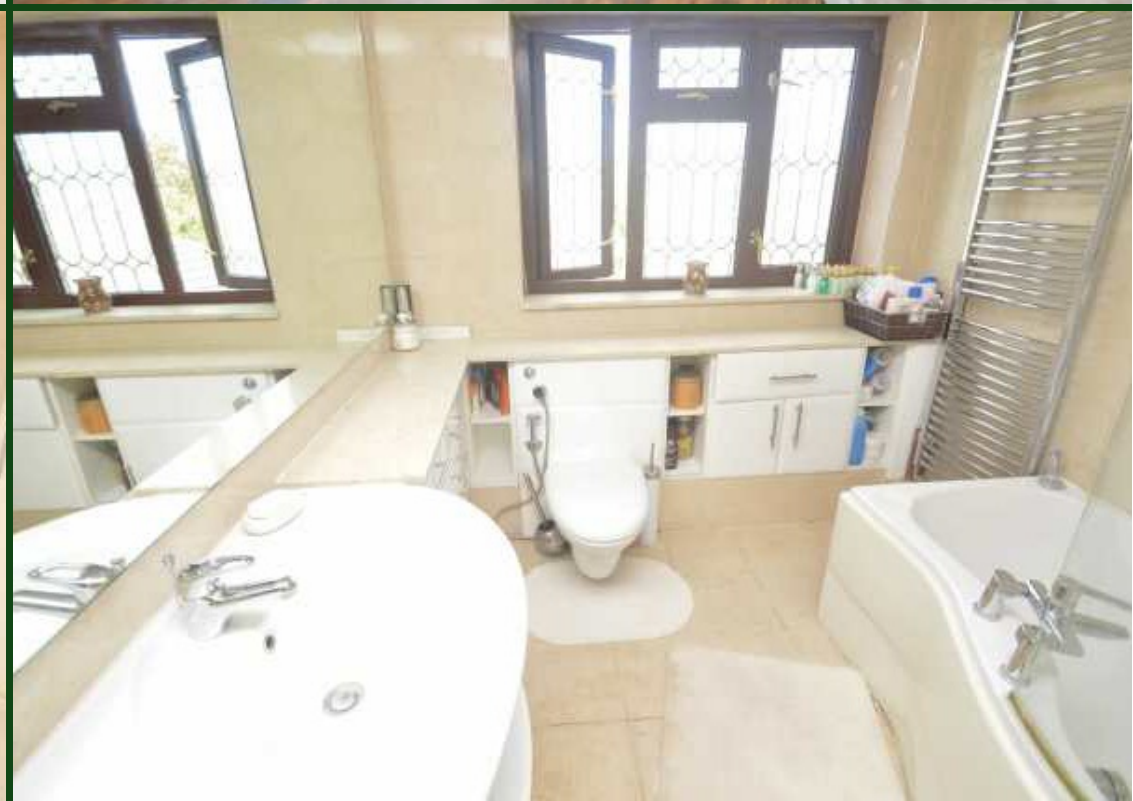
### BALCONY

Structural glass with stainless steel top handrail.

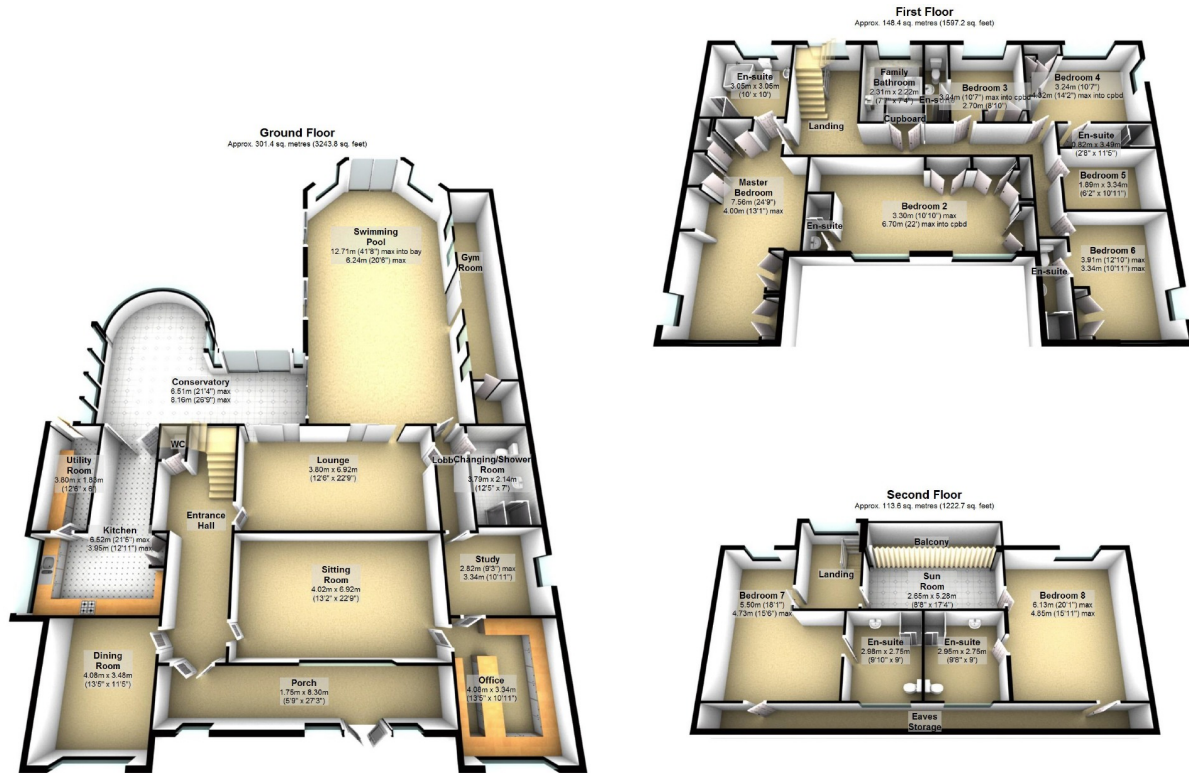
### EXTERIOR

The large landscaped rear garden measures approximately 90' x 70' with laid lawn, paved area, custom wooden pergola, brick built BBQ, fish pond, personal side access.

To the front of the property there is parking for multiple cars via own driveway with brick built fence and wrought iron gates and railings, detached garage to front with up and over door, power and lighting.







Total area: approx. 563.3 sq. metres (6063.7 sq. feet)

This plan is for illustration purposes only and may not be representative of the property. Plan created by Sandra Davidson Estate Agents www.sandradaavidson.com  
Plan produced using The Mobile Agent.