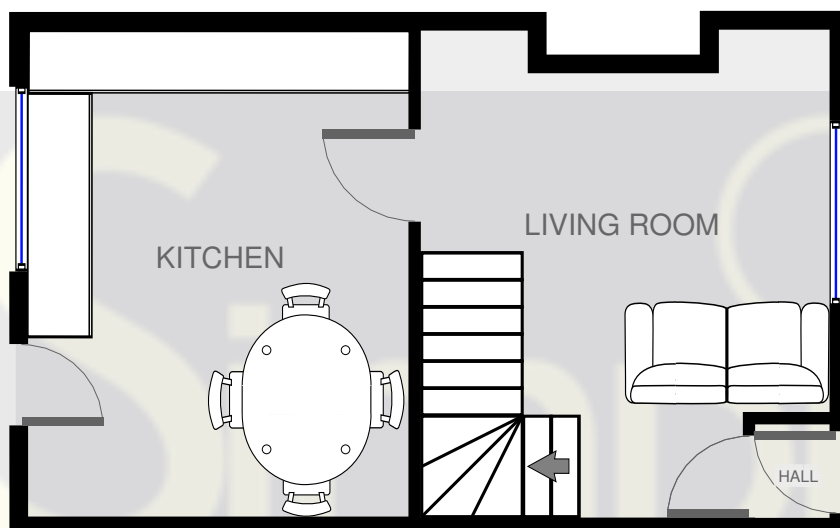
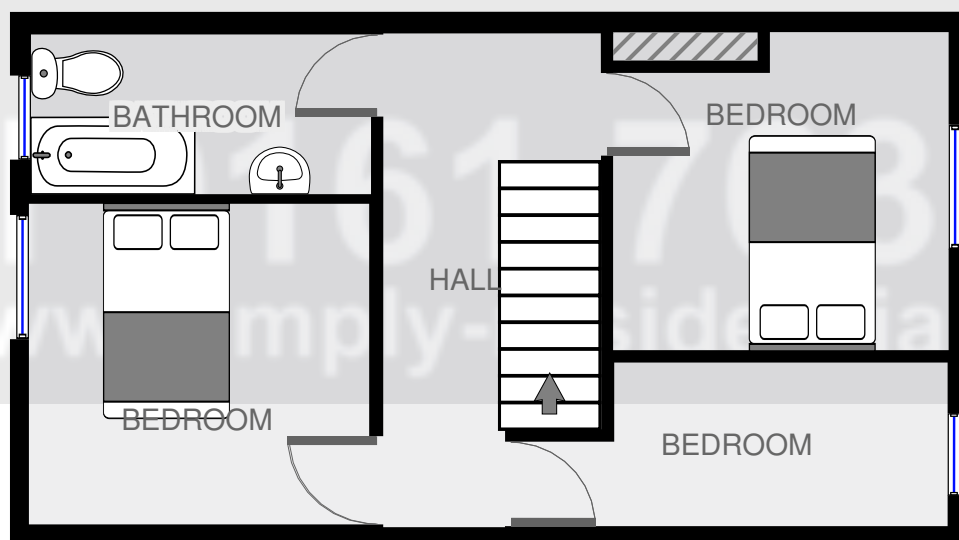


Ground Floor



1st Floor



This plan is not drawn to scale and is intended to provide a basic layout plan only which must be verified by users prior to making a legal commitment. We accept no responsibility due to reliance on the information provided and buyers and tenants should make their own verification prior to making a legal commitment. Errors and omissions accepted.

Plan 15

8 Potter Street, Bury, England, United Kingdom BL9 6BR



Simply Residential
info@simply-residential.co.uk
01617634141 01204 895999
2014-07-18 13:52



- 2 Floors
- 8 Rooms
- 3 Bedrooms
- 1 Bathroom