



REGISTERED OFFICE

27 MONTON GREEN, MONTON,
MANCHESTER M30 9LL
Tel: 0161-788 0303 Fax: 0161-788 0330

www.barlowwhite.co.uk rentals@barlowwhite.co.uk

Pinhigh Place, Salford, M6 8ND



Offers over £95,000

**** INVESTMENT** A580 LOCATION** CLOSE TO SALFORD ROYAL HOSPITAL** Barlow White are please to bring to the market this modern apartment in the sought after M6 LOCATION. The property offers a SPACIOUS LOUNGE, TWO BEDROOMS, MODERN KITCHEN AND BATHROOM, GCH & UPVC DOUBLE GLAZING. With SECURE ALLOCATED PARKING and offered with NO CHAIN. Great location with good access links to MANCHESTER CITY CENTRE AND SALFORD QUAYS. To arrange a viewing please call Barlow White on 0161 7880909.**

Hallway



With power points, radiator and storage cupboard.

Lounge 14'3 x 14' (4.34m x 4.27m)



A spacious lounge with power points, TV aerial, telephone connection, radiator, carpeted flooring, side aspect window and French doors opening to a Juliet Balcony.

Kitchen 9'0 x 8'3 (2.74m x 2.51m)



Modern kitchen will floor standing and wall mounted units with a stainless steel sink and drainer. Electric oven with a gas hob and extractor. With space for appliances. With a side facing window and tiled flooring and part tiled walls.

Bathroom
8'7 x 5'0 (2.62m x 1.52m)



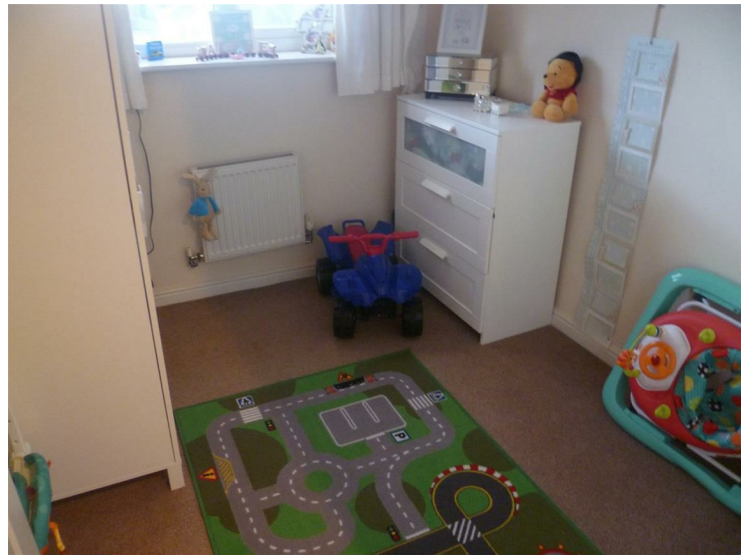
Fully fitted three piece bathroom suite comprising of wc, pedestal sink and bath with mains connected shower over. Includes expelair and shaver point. Part tiled walls and tiled floor.

Bedroom One
13'9 x 8'3 (4.19m x 2.51m)



Double bedroom with space for freestanding furniture. Also with French doors onto Juliet Balcony. With power points, TV aerial, radiator, rear facing window and carpeted flooring.

Bedroom Two
8'5 x 7'5 (2.57m x 2.26m)



Second bedroom with power points, radiator, rear facing window and carpeted flooring.

