



Asking Price Of £160,000 Leasehold

For Sale

Rental Yield: 5.44%

Coombe Road, Croydon



www.martincolondon.com

MARTIN&CO

0208 688 8565

croydon@martinco.com

145 Brighton Road, South Croydon, Surrey, CR2 6EF

Accuracy: Whilst we endeavour to make our sales details accurate and reliable, if there is any point which is of particular importance to you, please contact the office and we will be pleased to check the information. Do so, particularly if contemplating travelling some distance to view the property. **Sonic / laser Tape:** All measurements have been taken using a sonic / laser tape measure and therefore, may be subject to a small margin of error. **Services Not tested:** The mention of any appliances and/or services within these Sales Particulars does not imply they are in full and efficient working order. **All Measurements:** All Measurements are Approximate: **Mortgage & Financial Advice:** Our mortgages are offered by Seico who have a team of highly qualified Financial Consultants that can provide you with up to the minute information on many of the rates available. YOUR HOME IS AT RISK IF YOU DO NOT KEEP UP REPAYMENTS ON A MORTGAGE OR OTHER LOANS SECURED ON IT. Full written quotation available on request. A suitable life policy may be required. Loans subject to status. Minimum age 18.

For Sale

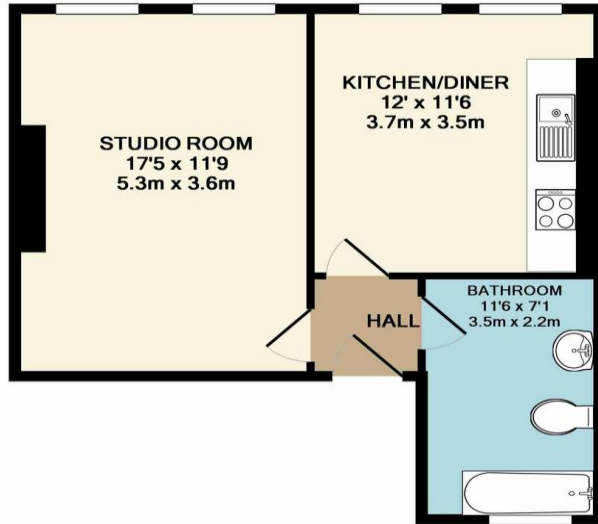
Asking Price Of **£160,000** Leasehold

0 Bedroom Studio Flat

..... **HUGE STUDIO WITH POTENTIAL TO CONVERT** on the East/South Croydon borders, close to South Croydon Station & Lloyd Park tram stop. 17' studio room, 12' eat-in kitchen/dining room, big bathroom/w.c. - ideal for the first time buyer or investor looking to capitalise on a Westfield uplift - **CALL NOW!** ● ● ● **Top Floor Studio Flat**

HUGE STUDIO WITH POTENTIAL TO CONVERT on the East/South Croydon borders, close to South Croydon Station & Lloyd Park tram stop. 17' studio room, 12' eat-in kitchen/dining room, big bathroom/w.c. - ideal for the first time buyer or investor looking to capitalise on a Westfield uplift - **CALL NOW!**

- Particularly Spacious
- Close to Train & Tram
- 17' Studio Room
- 12' Eat-in Kitchen
- Possible 1 Bed (STUC)
- Long Lease
- No Onward Chain
- EPC Rating:



TOTAL APPROX. FLOOR AREA 437 SQ.FT. (40.6 SQ.M.)
Whilst every attempt has been made to ensure the accuracy of the floor plan contained here, measurements of doors, windows, rooms and any other items are approximate and no responsibility is taken for any error, omission, or mis-statement. This plan is for illustrative purposes only and should be used as such by any prospective purchaser. The services, systems and appliances shown have not been tested and no guarantee as to their operability or efficiency can be given



www.martincolondon.com

MARTIN & CO

0208 688 8565

croydon@martinco.com

145 Brighton Road, South Croydon, Surrey, CR2 6EF

Accuracy: Whilst we endeavour to make our sales details accurate and reliable, if there is any point which is of particular importance to you, please contact the office and we will be pleased to check the information. Do so, particularly if contemplating travelling some distance to view the property. **Sonic / Laser Tape:** All measurements have been taken using a sonic / laser tape measure and therefore, may be subject to a small margin of error. **Services Not tested:** The mention of any appliances and/or services within these Sales Particulars does not imply they are in full and efficient working order. **All Measurements:** All Measurements are Approximate: **Mortgage & Financial Advice:** Our mortgages are offered by Seico who have a team of highly qualified Financial Consultants that can provide you with up to the minute information on many of the rates available. **YOUR HOME IS AT RISK IF YOU DO NOT KEEP UP REPAYMENTS ON A MORTGAGE OR OTHER LOANS SECURED ON IT.** Full written quotation available on request. A suitable life policy may be required. Loans subject to status. Minimum age 18.