



Room 4, 150 Ashley Road, Springbourne, Bournemouth, Dorset, BH1 4NF

£475 Per Calendar Month

A modern fully furnished double room for single occupancy with television and fridge included. WIFI is also included. There is shared bathroom and kitchen facilities and a laundry area.

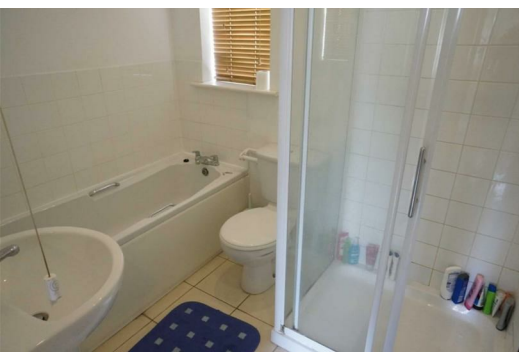
The property is located next to Kings Park and has good access to Bournemouth town centre along Holdenhurst Road and is just a short walk from JP Morgan. No parking

Single professionals only please

No DSS

Available from 13th October 2015





Energy Efficiency Rating		Environmental Impact (CO ₂) Rating	
Current	Potential	Current	Potential
 A B C D E F G	 A B C D E F G	 A B C D E F G	 A B C D E F G
England & Wales	England & Wales	England & Wales	England & Wales