

EXAMPLE RECEPTION



ROSEMARY PLACE, ROYAL MINT GARDENS, THE
£599,950



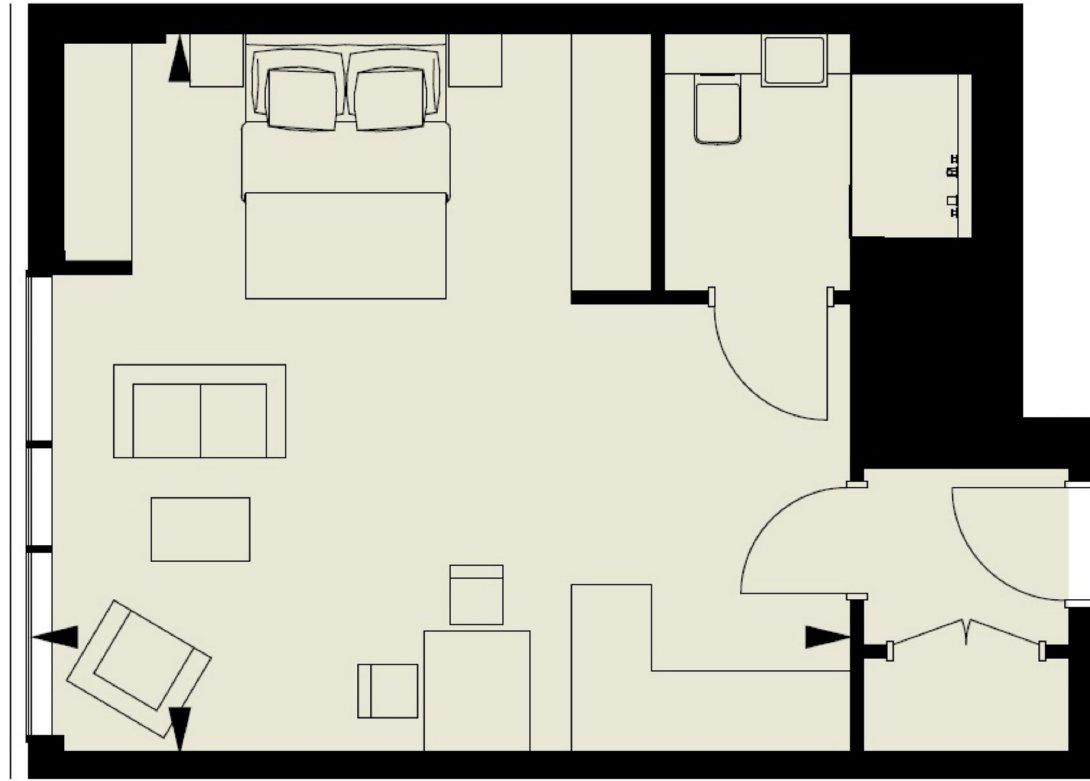
A west facing suite apartment, located on the second floor of this exclusive development, with completion Q4 2017. The property features a spacious reception, open plan kitchen, high specification bathroom and three separate storage areas. Royal Mint Gardens offers a 24 hour concierge, private health club with gym, swimming pool and spa, private screening room and landscaped exterior gardens. The development is situated in the heart of historic London, moments from Tower Bridge, St Katharine's Docks and the Tower of London.



WELLNESS CENTRE



**ROSEMARY PLACE, ROYAL MINT GARDENS, LONDON E1
SECOND FLOOR**



Living/Bedroom 6.2m x 5.4m / 20'3" x 17'7"
Total area 37.0 sq m / 403 sq ft

