



**PROVIDENCE TOWER, CANARY WHARF**  
**REDUCED TO £355,000**





A twenty-third floor river view studio suite apartment, available as an off-plan investment purchase for completion in 2015.

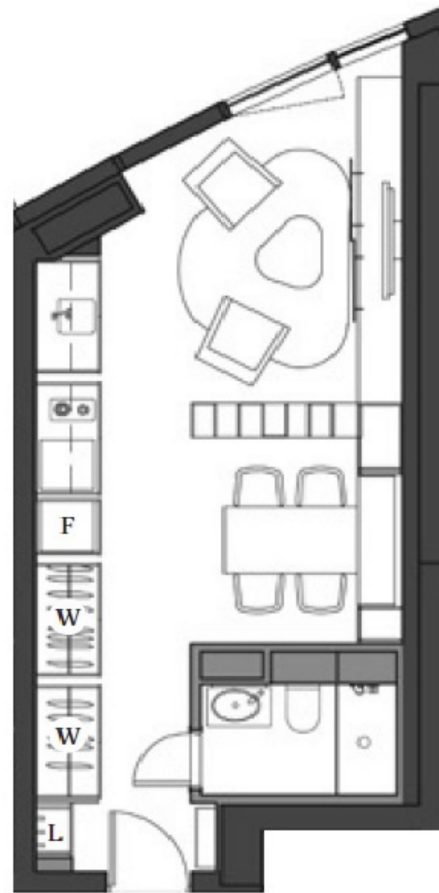
Providence Tower is the final building on the successful New Providence Wharf estate, a high-end residential community located next door to Canary Wharf, the world's banking centre. Standing at 43 stories tall, the meticulously designed apartments in Providence Tower will have panoramic views across London, as well as outstanding interior finishes. Residents will also enjoy exclusive use of a Sky Lounge and Sky Terrace atop the tower, which will serve as a place for quiet relaxation as well as a hospitality suite for private parties.







**PROVIDENCE TOWER, BISCAIYNE AVENUE, LONDON E14  
TWENTY-THIRD FLOOR**



**Total area**  
376.2sqft / 35.0sqm

**Living / Kitchen / Bed**  
7140 x 4115mm

**Bathroom**  
2200 x 1310mm

