
Description:

This landmark period Victorian building has been extensively and lovingly restored externally to its former glory with an amazing amount of attention to detail. The new double glazed sash windows also compliment the original design.

Internally this fabulous apartment over ground and first floor has been created and finished to a wonderfully high standard. Under-floor heating is provided throughout the entire ground floor. The living area provides solid oak flooring leading to the open plan tiled kitchen area. The bedroom is carpeted with underfloor heating to the bathroom.

This ground floor apartment has a south facing balcony reaching out over a tranquil stream with a further private large roof terrace; both amenity areas provide feature lighting and external power points. The modern kitchen includes fully integrated appliances (fridge/freezer, washer/dryer, dishwasher, electric oven and gas hob) and solid oak worktops with matching up-stands, both of which have been specially treated meaning no maintenance for the life of the oak. Feature lighting is also provided within the kitchen:

This swanky open plan apartment offers an abundance of features and early viewing is highly recommended.

Conveniently located, Blackheath train station and its village amenities are under a ten minute walk from the property. In addition the immediate parade offers a selection of shops and restaurants and Sainsbury's supermarket is also within the vicinity.

Directions:**Tenure:**

Lease term years from

Ground Rent:**Service Charge:****Council Tax Band:**



Room Dimensions:

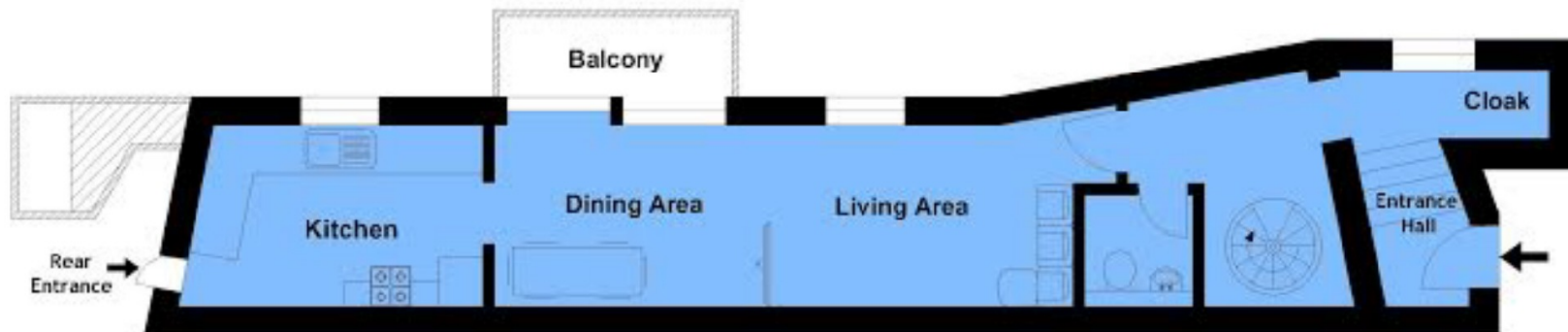


Please refer to www.jdmestateagents.com to see our full Area Guides.

Ground floor Apartment



FIRST FLOOR



GROUND FLOOR

This is for guidance only, not to scale and must not be relied upon as a statement of fact.
Attention is drawn to the notice on these particulars.

IMPORTANT NOTICE

jdm must advise that although every effort has been made to ensure the accuracy of these details they form no part of any contract and are issued without any responsibility on the part of the agents or vendor. Photographs may have been taken using a wide angle lens. Any floor plans shown are not to scale. All measurements, walls, doors, windows, fittings and appliances, their sizes and locations are shown conventionally and are approximate only. Any reference to alterations or particular use of the property wherever stated, is not a statement that planning, building regulations or other relevant consent has been obtained. We have not carried out a survey of the property nor have we tested any services, systems or appliances at this property. We strongly recommend that all the information we provide is verified by yourselves on inspection and by your Surveyor and Solicitor or Legal Adviser.

jdm recommends Independent Mortgage Advice. For help with your mortgage please contact your local branch. Your home may be repossessed if you do not keep up repayments on your mortgage. Written quotations available on request.

jdm Blackheath Village

36 Montpelier Vale, Blackheath, London SE3 0TA

020 8463 0091 e bh@jdmonline.com



jdm
LETTINGS