

RECEPTION



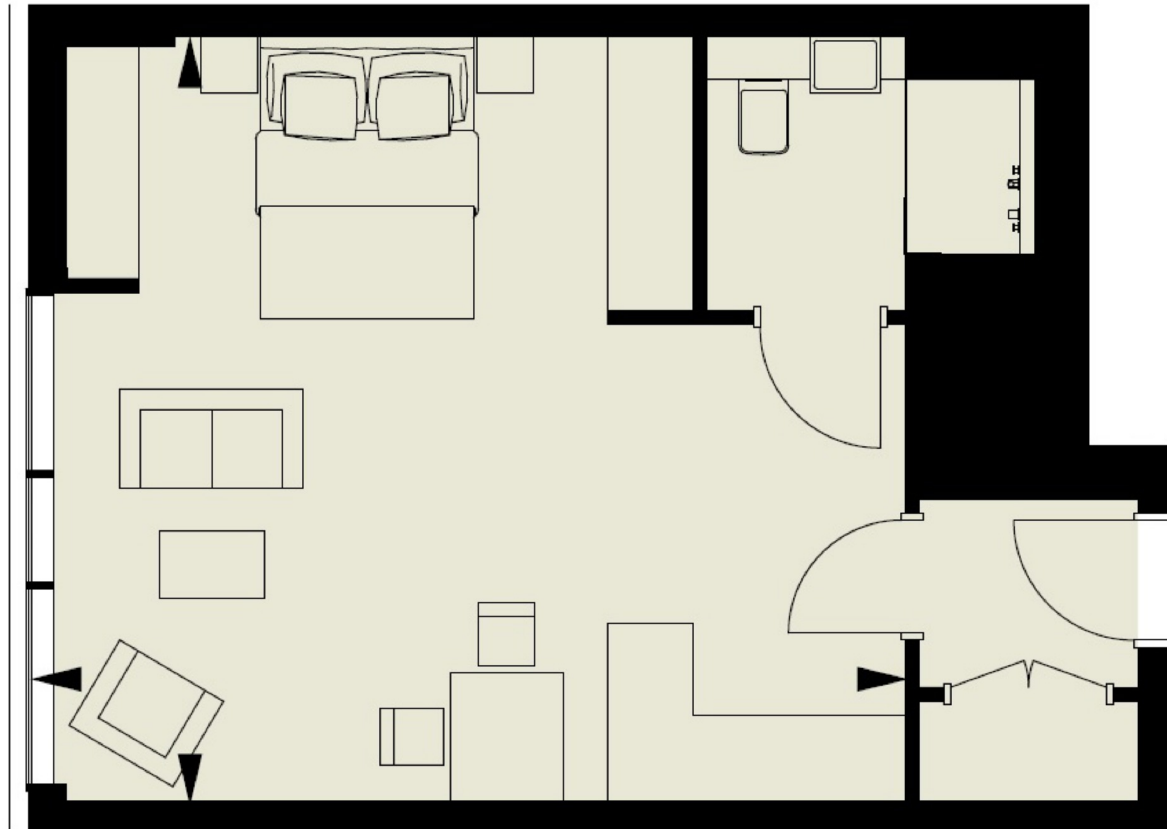
**PRIME LONDON**  
SALES · LETTINGS · ACQUISITIONS · ASSET MANAGEMENT  
NEW HOMES AND INVESTMENTS



**ROSEMARY PLACE, ROYAL MINT GARDENS, THE**  
**£599,950**



ROSEMARY PLACE, ROYAL MINT GARDENS, LONDON E1  
**SECOND FLOOR**



Living/Bedroom 6.2m x 5.4m / 20'3" x 17'7"  
Total area 37.0 sq m / 403 sq ft

