



PROVIDENCE TOWER, CANARY WHARF

£360,000



A thirty-sixth floor studio suite apartment, with an excellent layout and payment structure, available as an off-plan investment purchase for completion in early 2016. Providence Tower is the final building on the successful New Providence Wharf estate, a high-end residential community located next door to Canary Wharf, the worlds banking centre. Standing at 43 stories tall, the meticulously designed apartments in Providence Tower will have panoramic views across London, as well as outstanding interior finishes. Residents will also enjoy exclusive use of a Sky Lounge and Sky Terrace atop the tower, which will serve as a place for quiet relaxation as well as a hospitality suite for private parties.

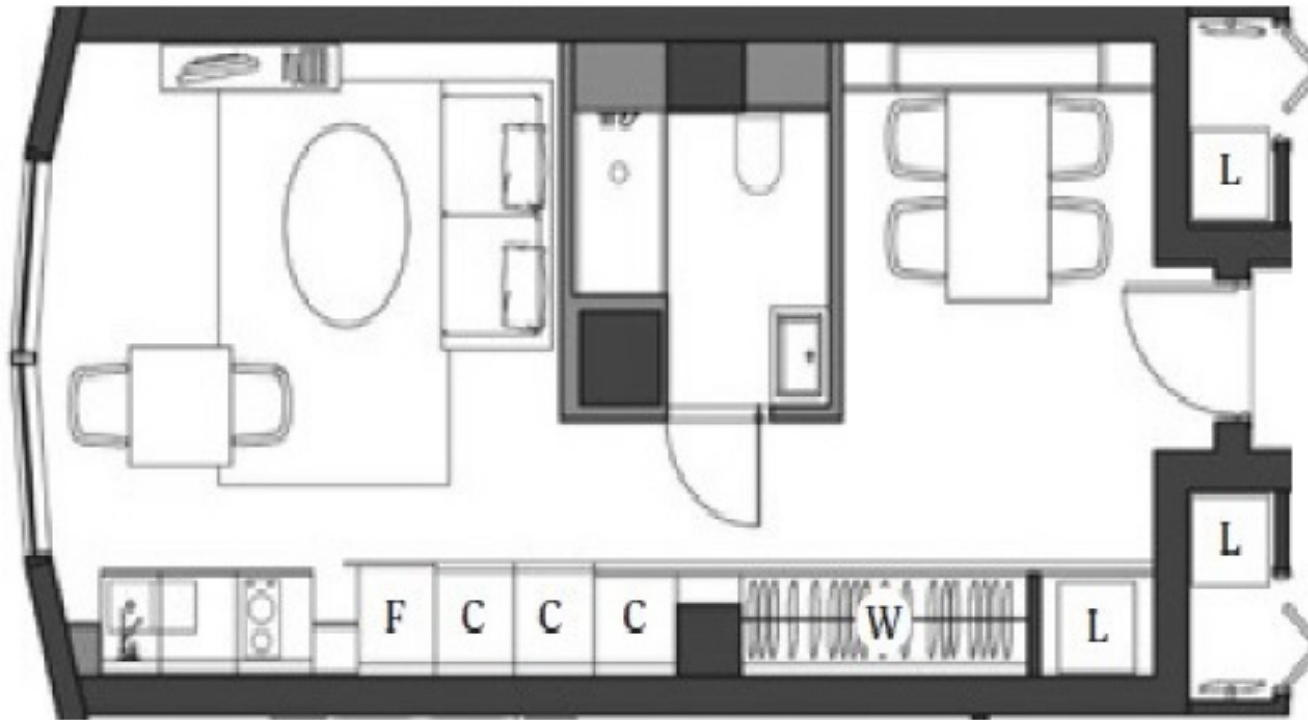




You may download, store and use the material for your own personal use and research. You may not republish, retransmit, redistribute or otherwise make the material available to any party or make the same available on any website, online service or bulletin board of your own or of any other party or make the same available in hard copy or in any other media without the website owner's express prior written consent. The website owner's copyright must remain on all reproductions of material taken from this website.

PROVIDENCE TOWER, BISCAIYNE AVENUE, LONDON E14

THIRTY-SIXTH FLOOR



Studio

Total area

397.2sqft / 36.9sqm

Living / Kitchen / Bed

8736 x 4240mm

Bathroom

1950 x 1965mm

