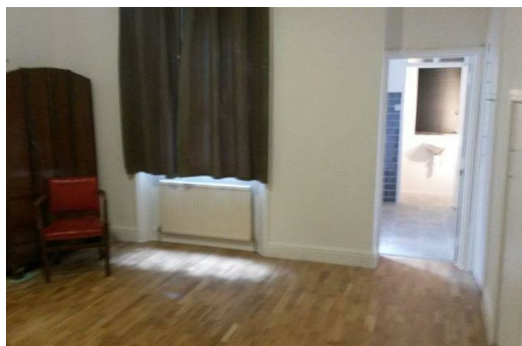
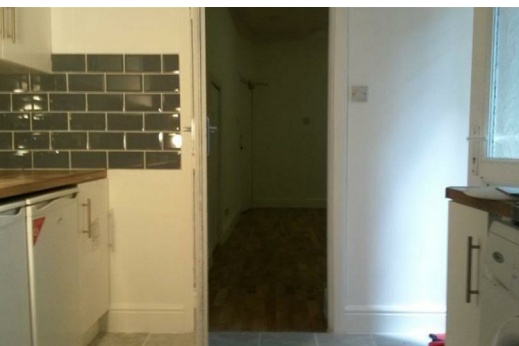




**Warwick Road, London
SW5 9UL**

£1,200 Per Month

A very large studio apartment (6x4.5m approximately), large kitchen, shower cubical, toilet, three storage rooms and additional single room if required for extra £400 per calendar month. Earls Court and West ~Brompton Underground Stations are one minute walk away. Bus stop is in front of the studio with buses C1, C3, 328 and 74. Bus stop for 430 bus is one minute walk from the studio. A Primary school is in front of the studio and another Secondary school is just about 8 minutes walk away. There are numerous schools within one kilometers from the studio. Shops, restaurants and other amenities are a very short distance from the studio.





29 Commercial Street, Swindon, SN1 5NS

Tel: 01793 535777 Email: sales@swindonhomedirect.co.uk Web: www.swindonhomedirect.co.uk